



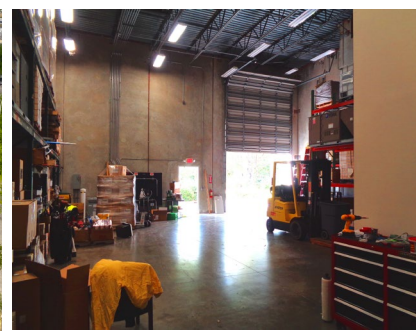
FOR SALE

OFFICE/WAREHOUSE

1254 SW 6th St.
Pompano Beach, FL 33069

- Pompano Business Park
- Corner Unit Condo
- 1 Roll-Up Garage Door (12'W x 14'H)
- Easy Access to I-95
- 50% Office/50% Warehouse
- Zoned I-1: General Industrial
- Roll-up Garage Door
- Plenty of Parking (Front and Rear)

3,258 +/- SQ FT
\$579,000



JOE PELAYO, CCIM, SIOR
trec@joepelayo.com
954.224.8773

TREC Total Real Estate
Consultants Inc.
www.trecfl.com

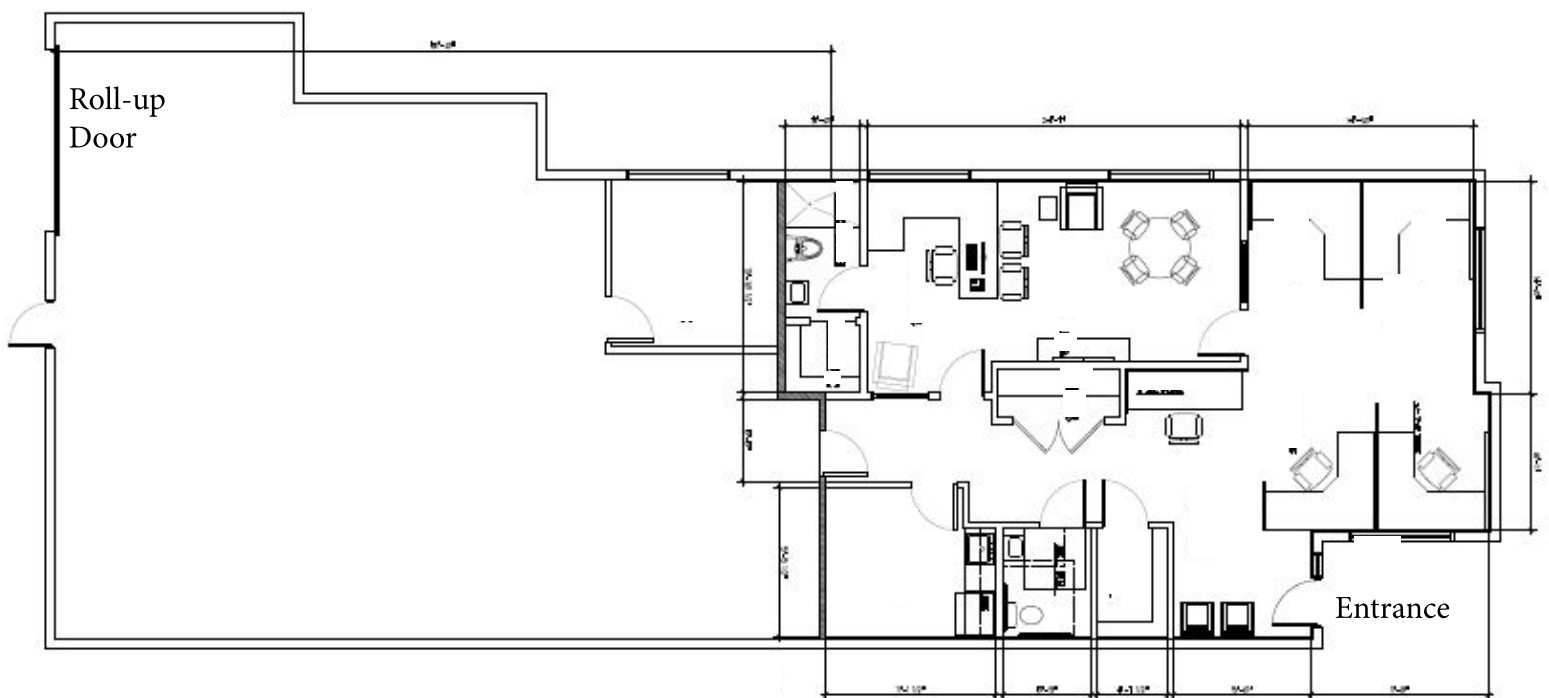
CoStar
POWER BROKER
2018 Top Broker Award



NOTE: This offering subject to errors, omissions, prior sales or withdrawal without notice



POMPANO BUSINESS PARK



JOE PELAYO, CCIM, SIOR
trec@joepelayo.com
954.224.8773

TREC Total Real Estate
Consultants Inc.
www.trecfl.com



NOTE: This offering subject to errors, omissions, prior sales or withdrawal without notice