

1345 EAST 3900 SOUTH, SALT LAKE CITY 84124



## PROPERTY INFORMATION

- UNIT 215/216: 1,489 SF AVAILABLE
- MEDICAL/GENERAL OFFICE SPACE
- AMPLE PARKING: 5.39/1,000 SF
- ADJACENT TO ST. MARKS HOSPITAL
- GREAT CENTRAL VALLEY LOCATION
- MANY RETAIL & RESTAURANT AMENITIES NEARBY
- HIGHLY VISIBLE OFF 3900 SOUTH

## DEMOGRAPHICS

	1 MILE	3 MILE	5 MILE
TOTAL POPULATION	17,501	145,428	317,368
TOTAL HOUSEHOLDS	7,200	58,049	124,862
AVG. HOUSEHOLD INC.	\$59,108	\$61,010	\$61,625

## FINANCIAL INFORMATION

OWN FOR \$1,128.50/MONTH  
- BASED ON 10% DOWN, FINANCED THROUGH SBA AT  
5% INTEREST ON A 20 YEAR AMORTIZATION -

**SALE PRICE REDUCED! : from ~~\$237,000.00~~ to \$190,000.00**

MATT MANGUM

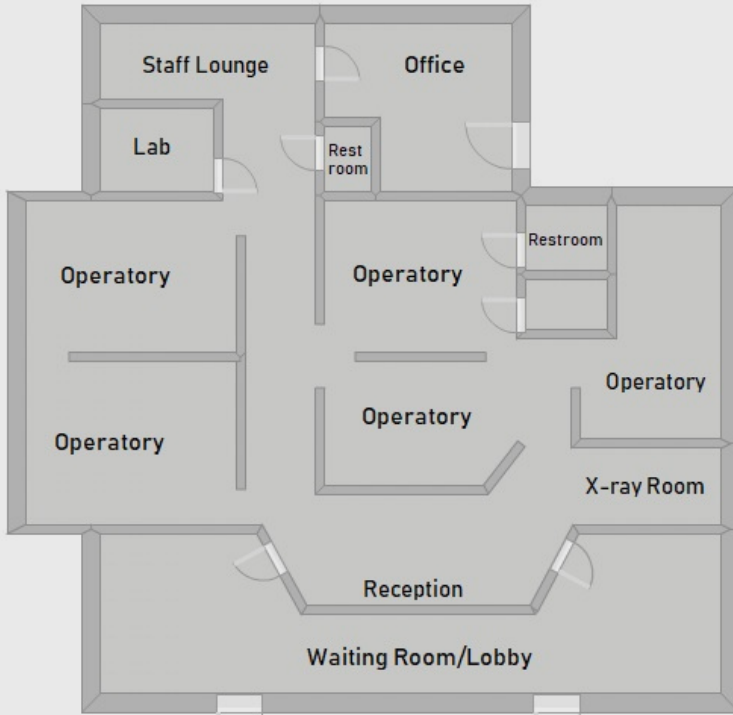
MATT.MANGUM@CRCNATIONWIDE.COM

**801.617.1700**

KELLEN KONCAR

KELLEN.KONCAR@CRCNATIONWIDE.COM





**Unit 215/216: 1,489 SF Medical Office**

