



FOR SALE OFFICE/WAREHOUSE

12500 NW 35th St,
Coral Springs FL 33065

5,146+/- SQ FT (Building Size)

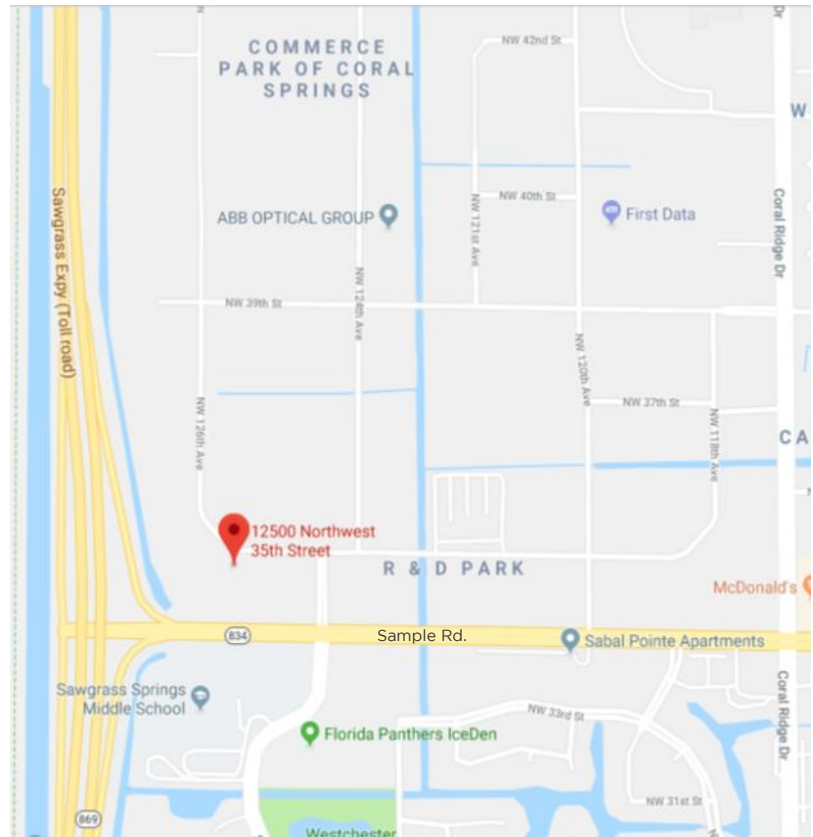
- Shell Space

88,312+/- SQ FT (Lot Size)

2.04+/- Acres

- Concrete Wall Fencing the Property
- Asphalt/Concrete Floors
- Co-broker Commission: 2%

\$2,100,000

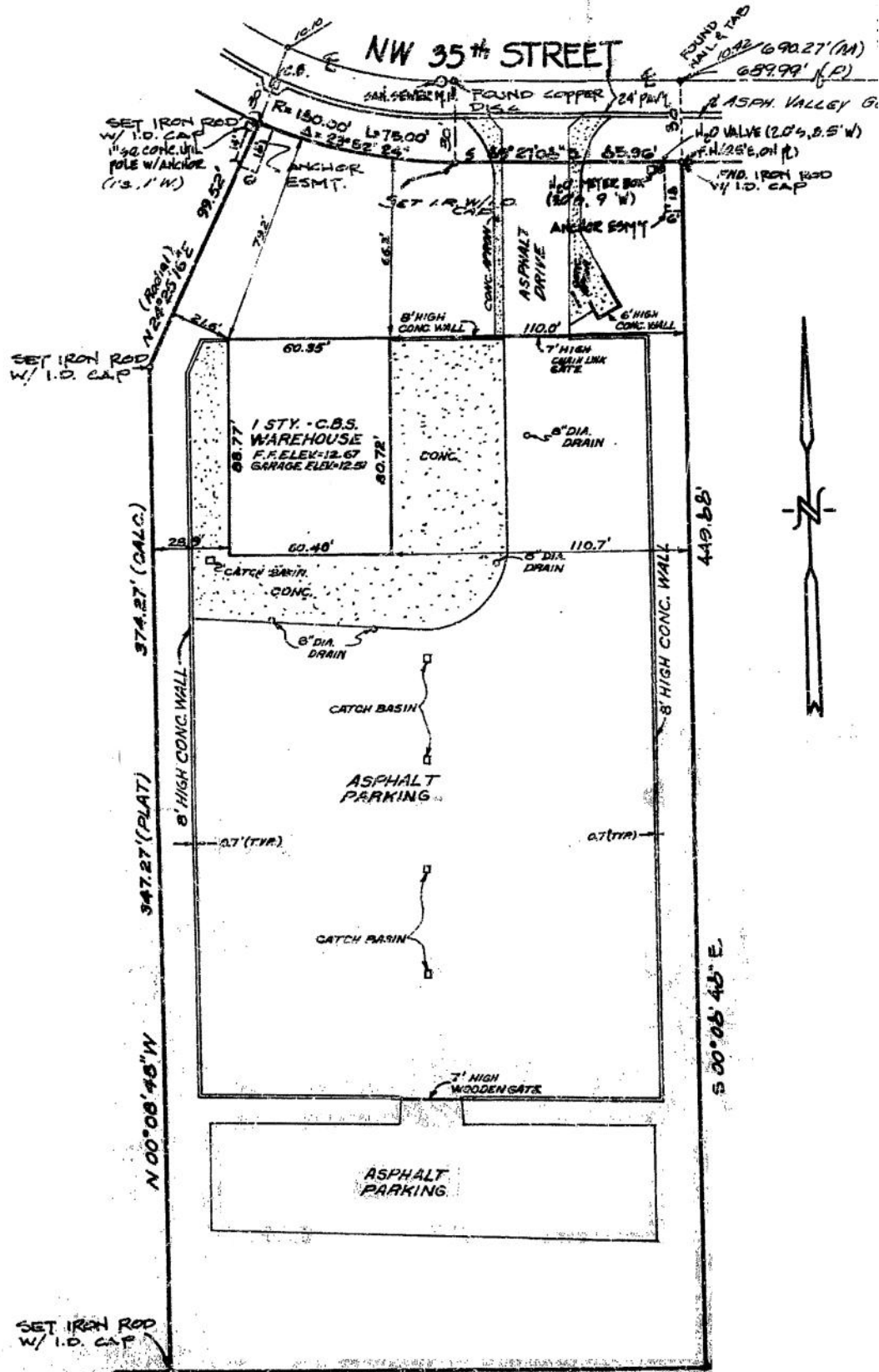


JOE PELAYO, CCIM, SIOR
TREC@JOEPELAYO.COM
WWW.TRECFL.COM
954.224.8773

TREC Total Real Estate
Consultants Inc.
www.trecfl.com

CoStar
POWER BROKER™ AWARD
Top Firm & Agent
Ranked on sales & leasing transactions

NOTE: This offering subject to errors, omissions, prior sales or withdrawal without notice



W Sample Rd



JOE PELAYO, CCIM, SIOR
 TREC@JOEPELAYO.COM
 WWW.TRECFL.COM
 954.224.8773

TREC Total Real Estate
 Consultants Inc.
 www.trecfl.com

CoStar
POWER BROKER™ AWARD
 Top Firm & Agent
 Ranked on sales & leasing transactions

NOTE: This offering subject to errors, omissions, prior sales or withdrawal without notice