



10370 Royal Palm Blvd,
Coral Springs, FL 33071

LAND FOR SALE \$1,172,934

**FOR LEASE BUILD TO SUIT
PRICE NEGOTIABLE**

ZONING B2 / STORE / RETAIL / RESTAURANT
EDUCATIONAL / SCHOOLS

43,442 SQFT PRICE: \$1,172,934

Could be Sold together with:

10340 45,887 SQFT \$1,330,723

10360 62,605 SQFT \$2,112,000

TAX ID 4841 21 36 0012



RICHARD D. ABRAHAM, CCIM, SIOR
RDABRAHAM1@AOL.COM
WWW.ABRAHAMNASSOCIATES.COM
954.252.9800



JOE PELAYO, CCIM, SIOR
TREC@JOEPELAYO.COM
WWW.TRECFL.COM
954.224.8773



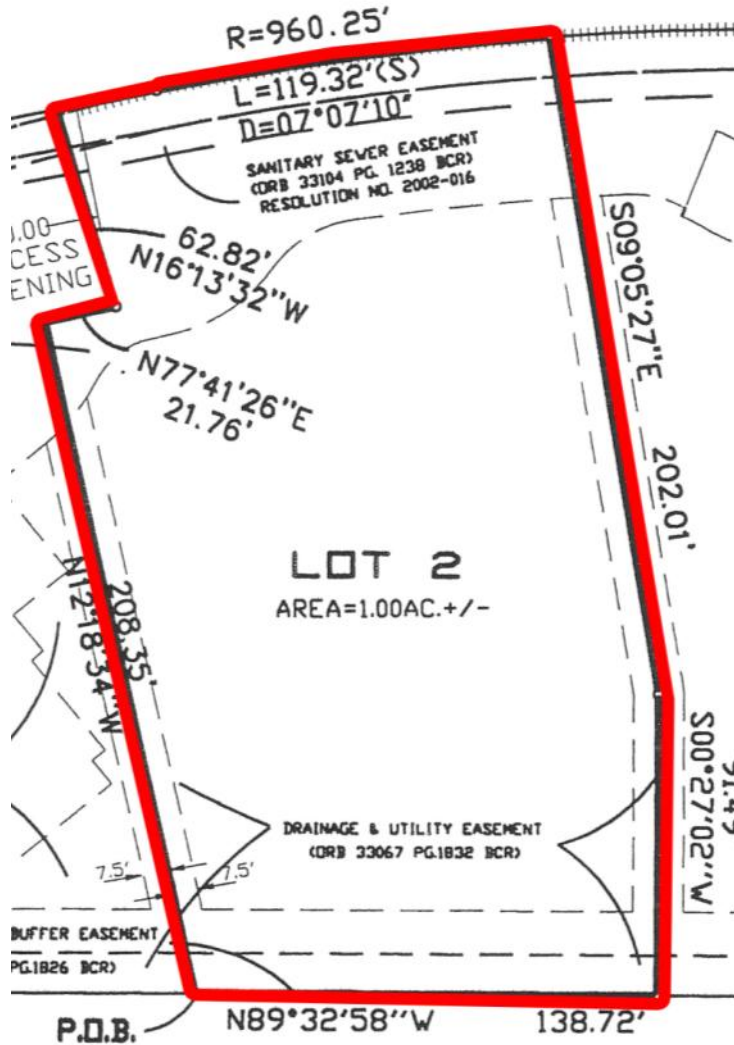
NOTE: This offering subject to errors, omissions,
prior sales or withdrawal without notice



RETAIL, OFFICES, FAST FOOD, STORES, BANK, CHURCHES

LAND FOR SALE OR LEASE

10370 Royal Palm Blvd,
Coral Springs, FL 33071



TRAFFIC COUNT PER DAY

- 25,000 Coral Springs Dr
- 51,000 University Dr
- 22,000 Royal Palm Blvd

POPULATION RADIUS

- 1 Mile 17,790
 - 2 Mile 154,995
 - 3 Mile 350,000
- Population growth 6%



- Specific tapestry life style
- Specific demographic population
- Available on request



JOE PELAYO, CCIM, SIOR

TREC@JOEPELAYO.COM
WWW.TRECFL.COM

954.224.8773

TREC Total Real Estate Consultants Inc.
www.trecfl.com



RICHARD D. ABRAHAM, CCIM, SIOR

RDABRAHAM1@AOL.COM
WWW.ABRAHAMNASSOCIATES.COM

954.252.9800

ABRAHAM & Associates, Inc.
Commercial and Industrial Real Estate Services

CCIM Certified Commercial Investment Member

SIOR SOCIETY OF INDUSTRIAL & OFFICE REALTORS

NOTE: This offering subject to errors, omissions, prior sales or withdrawal without notice.