



LAND FOR SALE \$1,330,723

**FOR LEASE BUILD TO SUIT
PRICE NEGOTIABLE**

**ZONING B2 / STORE / RETAIL / RESTAURANT
EDUCATIONAL / SCHOOLS**

45,887 SQFT \$29 Per SQFT

- B-2 Zoning
- **10340: Vacant Lot**
150 FT Frontage / Dip 305 FT

Could be Sold together with:

10360 62,605 SQFT \$2,112,000

10370 43,442 SQFT \$1,172,934

TAX ID 4841 21 36 0016



RICHARD D. ABRAHAM, CCIM, SIOR

RDABRAHAM1@AOL.COM
WWW.ABRAHAMNASSOCIATES.COM

954.252.9800



JOE PELAYO, CCIM, SIOR

TREC@JOEPELAYO.COM
WWW.TRECFL.COM

954.224.8773



NOTE: This offering subject to errors, omissions, prior sales or withdrawal without notice



RETAIL, OFFICES, FAST FOOD, STORES, BANK, CHURCHES

LAND FOR SALE OR LEASE

10340 Royal Palm Blvd,
Coral Springs, FL 33071

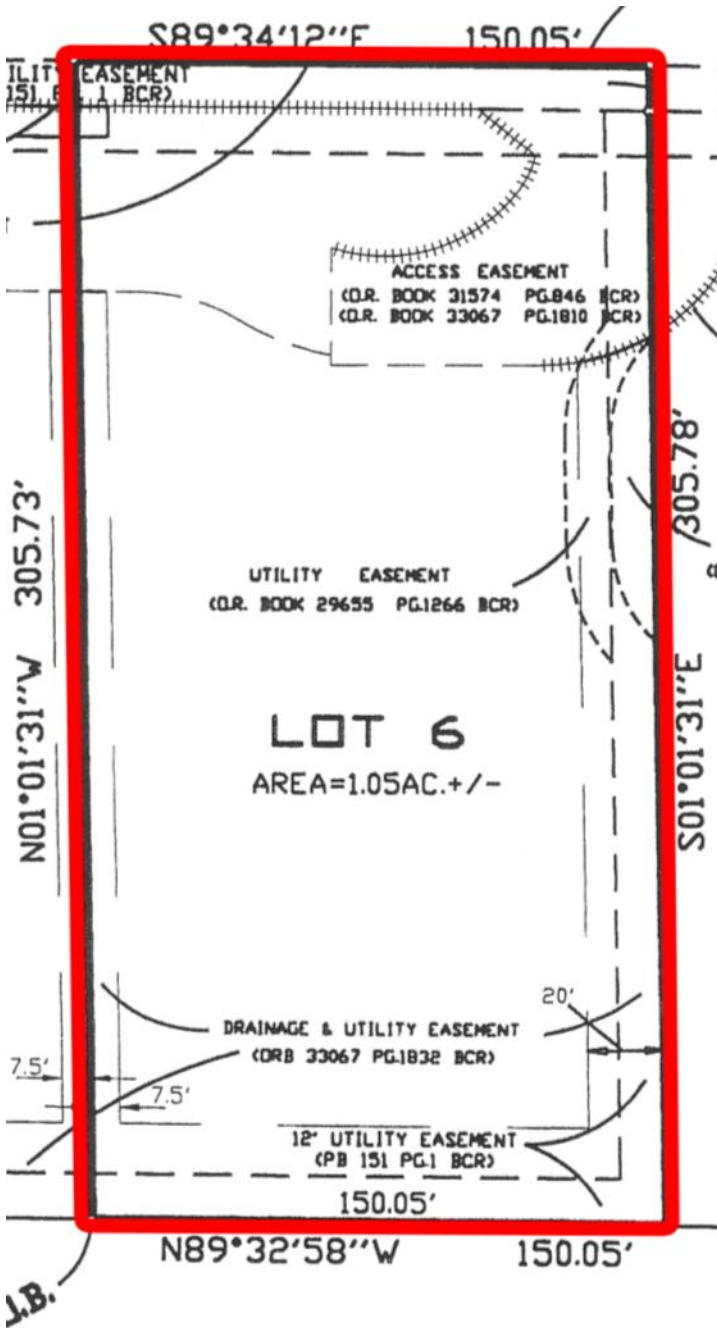
TRAFFIC COUNT PER DAY

- 25,000 Coral Springs Dr
- 51,000 University Dr
- 22,000 Royal Palm Blvd

POPULATION RADIUS

- 1 Mile 17,790
- 2 Mile 154,995
- 3 Mile 350,000

Population growth 6%



- Specific tapestry life style
- Specific demographic population
- Available on request



JOE PELAYO, CCIM, SIOR

TREC@JOEPELAYO.COM
WWW.TRECFL.COM

954.224.8773



RICHARD D. ABRAHAM, CCIM, SIOR

RDABRAHAM1@AOL.COM
WWW.ABRAHAMNASSOCIATES.COM

954.252.9800



NOTE: This offering subject to errors, omissions, prior sales or withdrawal without notice.