

BLI LLC

~ 23 Acres Commercial/Unrestricted

**MUST SEE PROPERTY
GREAT LOCATION
CALL FOR PRICE**

675 Ft

**Highway 46 Frontage,
Spring Branch, TX**

NOT in Flood Zone

High Traffic Area

**Less than 2 Miles
from
4 Schools**

**Super Walmart
Singing Hills
Shopping Center
Starbucks
The Home Depot
HEB Plus, McDonalds**

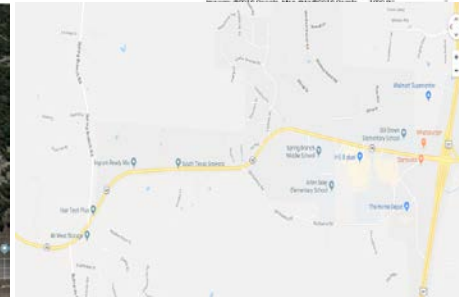
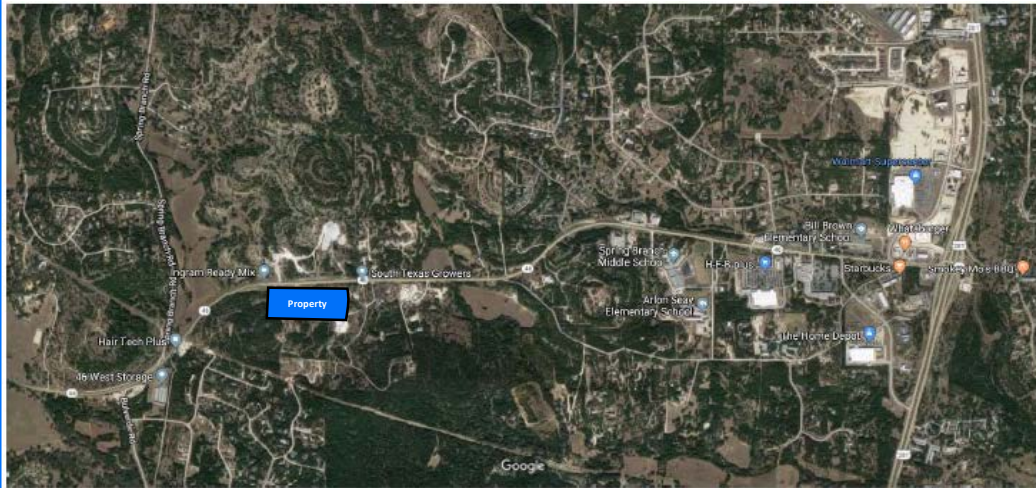
CONTACT:

Jack Lam

Principal Agent

281.704.8800

jackplam@gmail.com



Location The property is located in Spring Branch, TX on Highway 46, West of Highway 281

Zoning Commercial and Unrestricted. Bulverde ETJ

Two TxDot approved entries

Projected Road Expansions

Utilities Water: Canyon Lake WSC in front of property. Electricity available.

Features Beautiful topography with matured trees. Great location for apartment, public storage, church, shopping center, etc.

Comal County Property ID 75617

Legal Description
A-201 SUR-716 T GERFERS,
ACRES 22.936

Ready to build