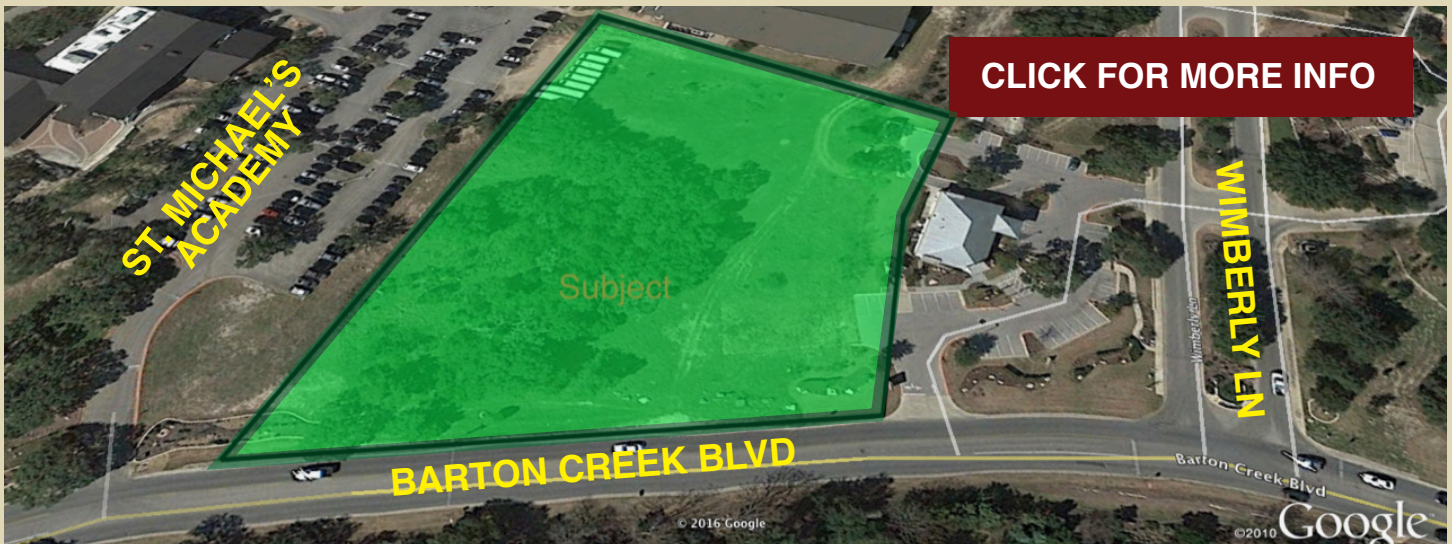


2800 Barton Creek Blvd

Austin, TX 78735



[CLICK FOR MORE INFO](#)

Price	\$2,950,000
Location	2800 Barton Creek Blvd, Austin, TX 78735 Midway between Bee Cave Rd. and Southwest Pkwy.
Land Area	2.941 acres
Topography	Gently sloping
Zoning	None. In Travis County and the City of Austin ETJ, but not in the city limits. The only remaining commercial land on Barton Creek Blvd.
Restrictions	No auto service station

Utilities	All utilities to site
Impervious Cover	30%
Site Plan	Approved for a 10,617 sq ft pad on 25,762 square feet of impervious cover.
Owner's Assoc	To be created prior to sale to form a condominium regime with the neighboring office building in order to preserve the aesthetics of the site and share parking.
Legal Desc	Block A, Lot 1, Phase 2, Wimberly Place
Website	2800bartoncreek.com



Rendering of building as designed and approved.
Buyer is NOT obligated to construct this building.

Eddie Karam 915-630-5255
eddie@wfkaram.com

 **KARAM COMPANY**
www.karamcompany.com