



Martin Andersen Beachline Expy

Narcoossee Rd

326.6' FT

7833 Narcoossee Rd

1,466.7' FT

1,483.4' FT

324.6' FT

7833 Narcoossee Rd,
Orlando, FL 33822

FOR SALE LAND LAKE NONA

HOTEL - RETAIL - BANQUET HALL - OFFICE

- Zoning NONA AARC Mixed Use
- Planned Development (PD) / 7 Story Hotel
- 140 Room Hotel (Could be increased to 200 rooms)
- Office Banquet Hall, Restaurant, Retail
- Family Recreation Facility
- Close to Orlando International Airport
- Toll 528 exit 13 north to property
- Traffic Counts: Narcoossee Rd 29,000 cars/day
Toll 528 Expy 69,000 cars/day
- Small Wetlands mitigated with the water retention
- 326.6 FT frontage to Narcoossee Rd

9.70 +/- ACRES
\$ 4,990,000

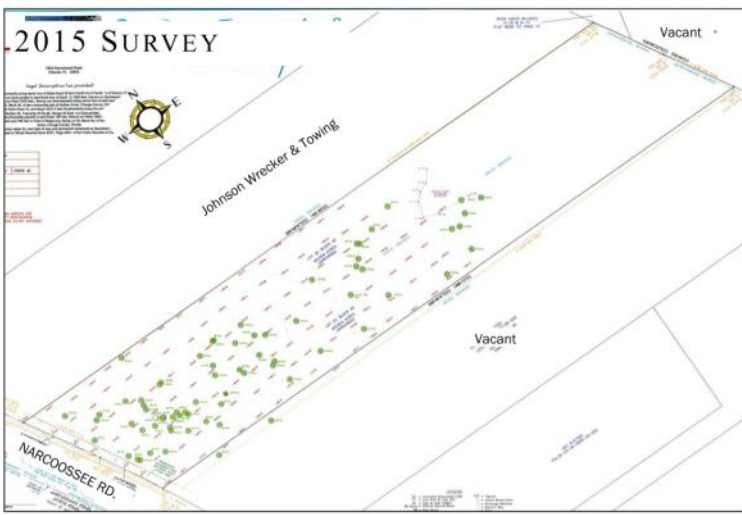
TAX ID: 25-23-30-0000-00-018



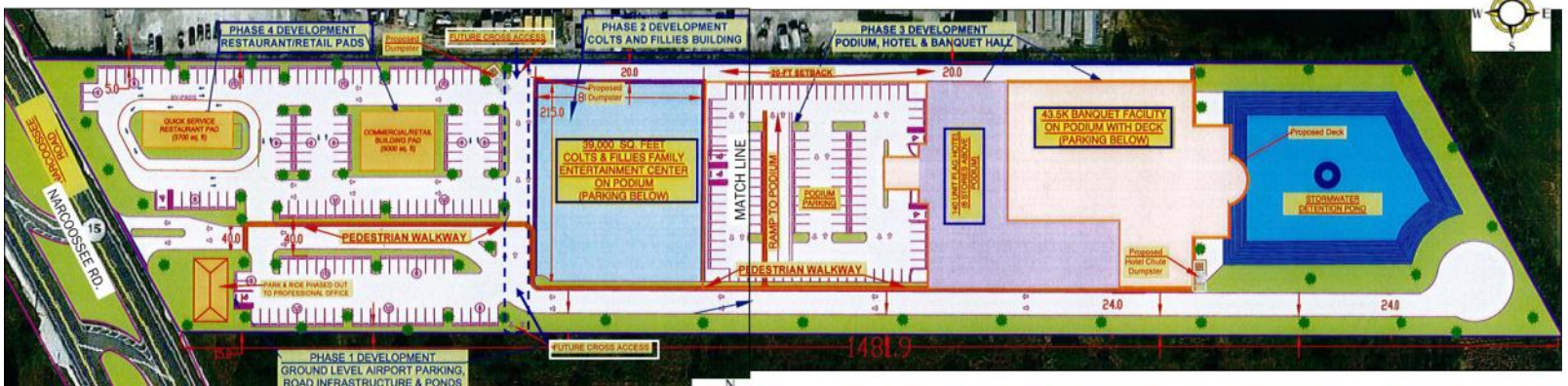
ALBA CORREA, Commercial Realtor
954.702.9593

GEORGE PELAYO, Commercial Realtor
JOE PELAYO, CCIM, SIOR
407.590.6599

NOTE: This offering subject to errors, omissions, prior sales or withdrawal without notice



7833 Narcoossee Rd, Orlando, FL 33822



GEORGE PELAYO, Commercial Realtor
JOE PELAYO, CCIM, SIOR
407.590.6599



ALBA CORREA, Commercial Realtor
954.702.9593

NOTE: This offering subject to errors, omissions, prior sales or withdrawal without notice