



**4699 SOUTH 4800 WEST, SALT LAKE CITY 84120**

**PRICE REDUCTION!**



**\* Seller Financing Available \***

**Property Information**

- **2,650 SF Free Standing Building**
- **Great Space for Retail, Office or Auto Use**
- **Available Immediately for Occupancy**
- **Zoned: C-2 (General Commercial)**
- **Site Size: 0.45 Acres**
- **Ample Parking: 6.49/1,000 SF**
- **Located on a Hard Corner with Signalized Intersection**
- **Easy Access to Mountain View Corridor and Bangerter Hwy**

**Demographics**

	1 Mile	3 Mile	5 Mile
Population	23,981	172,321	330,322
Households	6,745	48,801	97,669
Avg. Household Income	\$56,311	\$64,797	\$64,238

**SALE PRICE REDUCED!!**  
**FROM ~~\$550,000.00~~ TO \$500,000.00**  
**SELLER FINANCING AVAILABLE**

**8 0 1 . 6 1 7 . 1 7 0 0**

WEST HARADIN

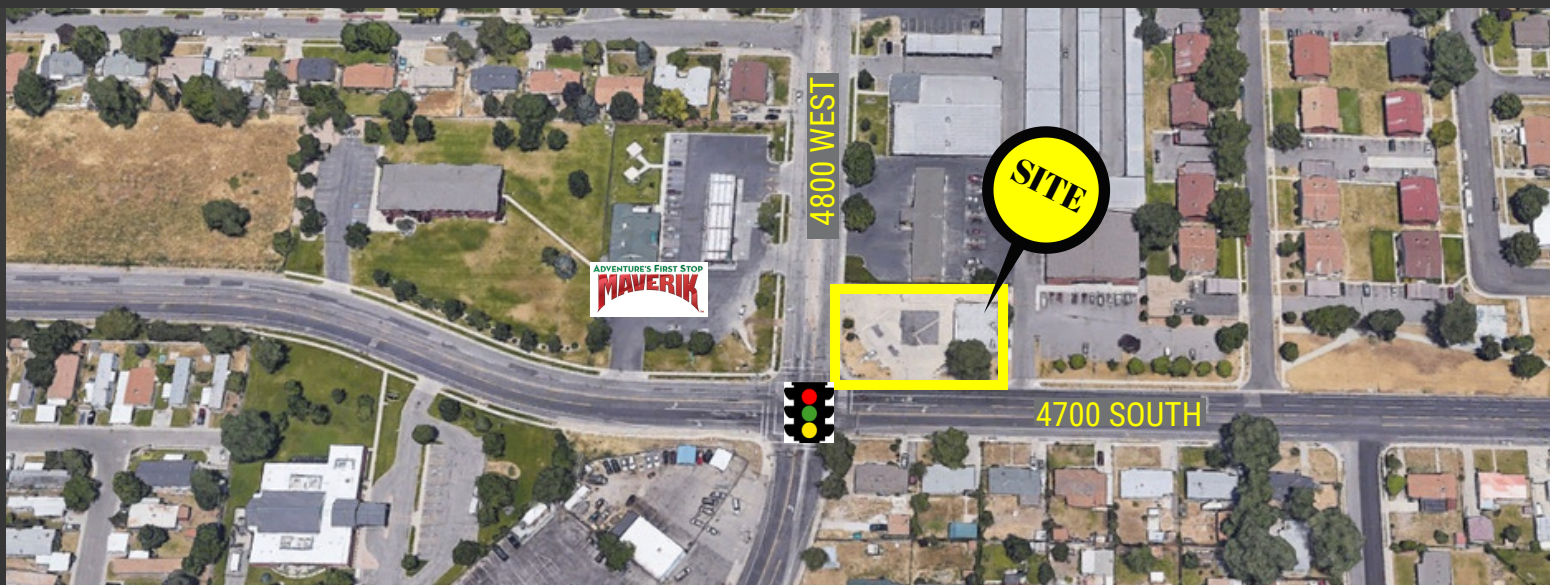
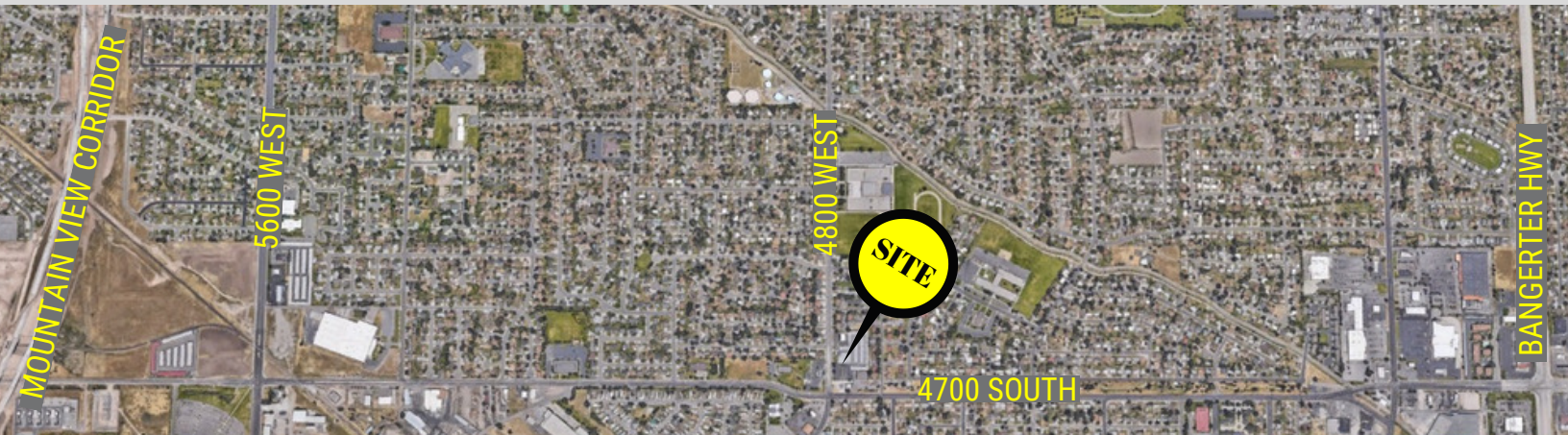
✉ WEST.HARADIN@CRCNATIONWIDE.COM

DAN FAWSON

✉ DANIEL.FAWSON@CRCNATIONWIDE.COM



4699 SOUTH 4800 WEST, SALT LAKE CITY 84120



801.617.1700

WEST HARADIN

DAN FAWSON

✉ WEST.HARADIN@CRCNATIONWIDE.COM

✉ DANIEL.FAWSON@CRCNATIONWIDE.COM