

RETAIL/OFFICE/STORAGE LAND DEVELOPMENT

2395 WEST 12600 SOUTH, RIVERTON 84065



PROPERTY INFORMATION

- 1.26 Acres of Land for Sale
Retail/Office/Storage Units
- Home is in Good, Usable Condition
1,900 SF with 5 Bedrooms
(5) Out Buildings
- Includes Parcel # 27-33-226-003-0000
- Zoning: Commercial, Residential
- Highly Visible in Busy Area

DEMOGRAPHICS

	1 Mile	3 Mile	5 Mile
Population	13,369	75,281	212,267
Households	3,742	21,339	61,835
Avg. Household Income	\$94,467	\$98,391	\$91,473

Traffic Counts

12600 South:	26,820 Annual Average Daily Traffic
Redwood Road:	15,195 Annual Average Daily Traffic

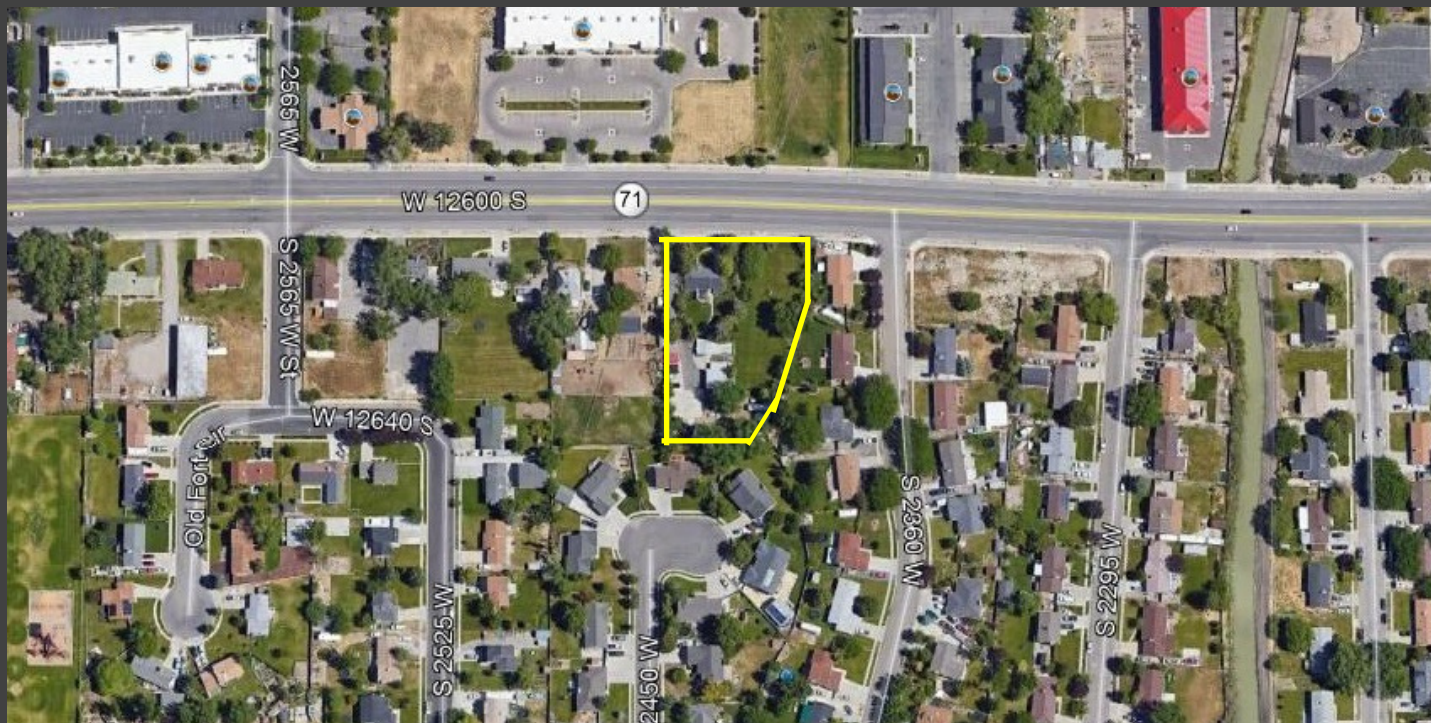
SALE PRICE
\$830,000.00

RETAIL/OFFICE/STORAGE LAND DEVELOPMENT

2395 WEST 12600 SOUTH, RIVERTON 84065



This information is given with the understanding that all negotiations and/or real estate activity related to the property described above shall be conducted through this cRc Nationwide office. The above information while not guaranteed, was obtained from sources we believe to be reliable.



SAM CHRISTENSEN

801.361.9798

SAM.CHRISTENSEN@CRCNATIONWIDE.COM



**COSTAR
POWER BROKER**