



# cRc Nationwide

COMMERCIAL REAL ESTATE CONSULTANTS

746 EAST WINCHESTER STREET, MURRAY 84107

## MURRAY OFFICE SUITE FOR SALE/LEASE/SUBLEASE



### PROPERTY INFORMATION

- **SUITE 120** : 8,200 RSF OFFICE SPACE  
DIVISIBLE TO : 4,000 RSF
- LEASE EXPIRATION DATE : 2/28/2019
- ON SITE FITNESS CENTER WITH SHOWERS
- SECURED UNDERGROUND PARKING
- BASEMENT STORAGE UNIT AVAILABLE
- MINUTES TO FASHION PLACE MALL AND FORT UNION RESTAURANT & RETAIL AMENITIES
- CONVENIENT ACCESS TO I-215 AND I-15



**LEASE RATE: \$13.95/SF FULL SERVICE**

**SALE PRICE: \$1,681,000.00**

**801.617.1700**

GREG MCDONALD

GREG.MCDONALD@CRCNATIONWIDE.COM



**COSTAR  
POWER BROKER AWARD**  
TOP FIRM  
2010, 2011, 2012, 2013,  
2014, 2015, 2016, 2017

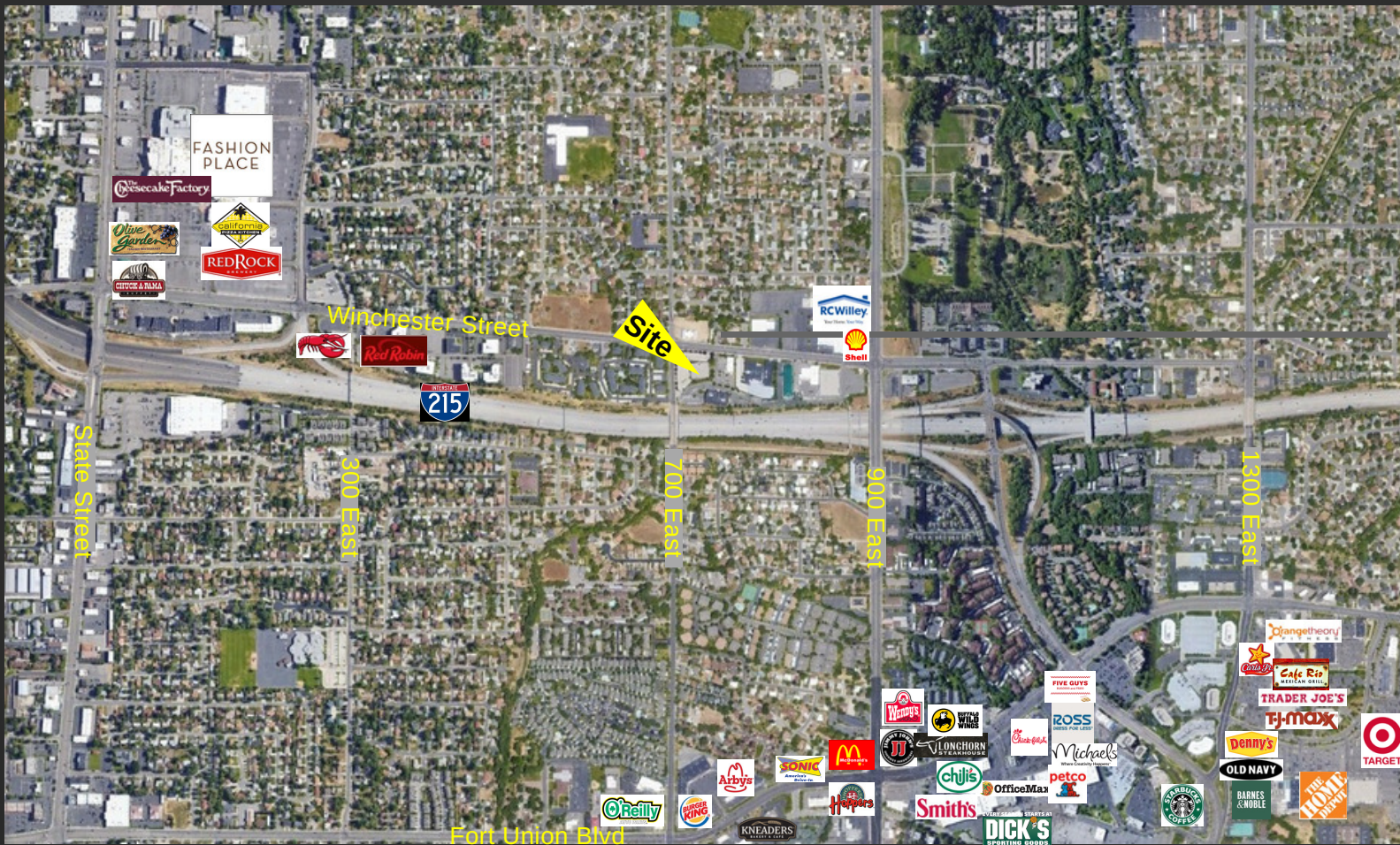




# cRc Nationwide

COMMERCIAL REAL ESTATE CONSULTANTS

746 EAST WINCHESTER STREET, MURRAY 84107



801.617.1700

GREG MCDONALD

GREG.MCDONALD@CRCNATIONWIDE.COM



COSTAR  
POWER BROKER AWARD  
TOP FIRM  
2010, 2011, 2012, 2013,  
2014, 2015, 2016, 2017