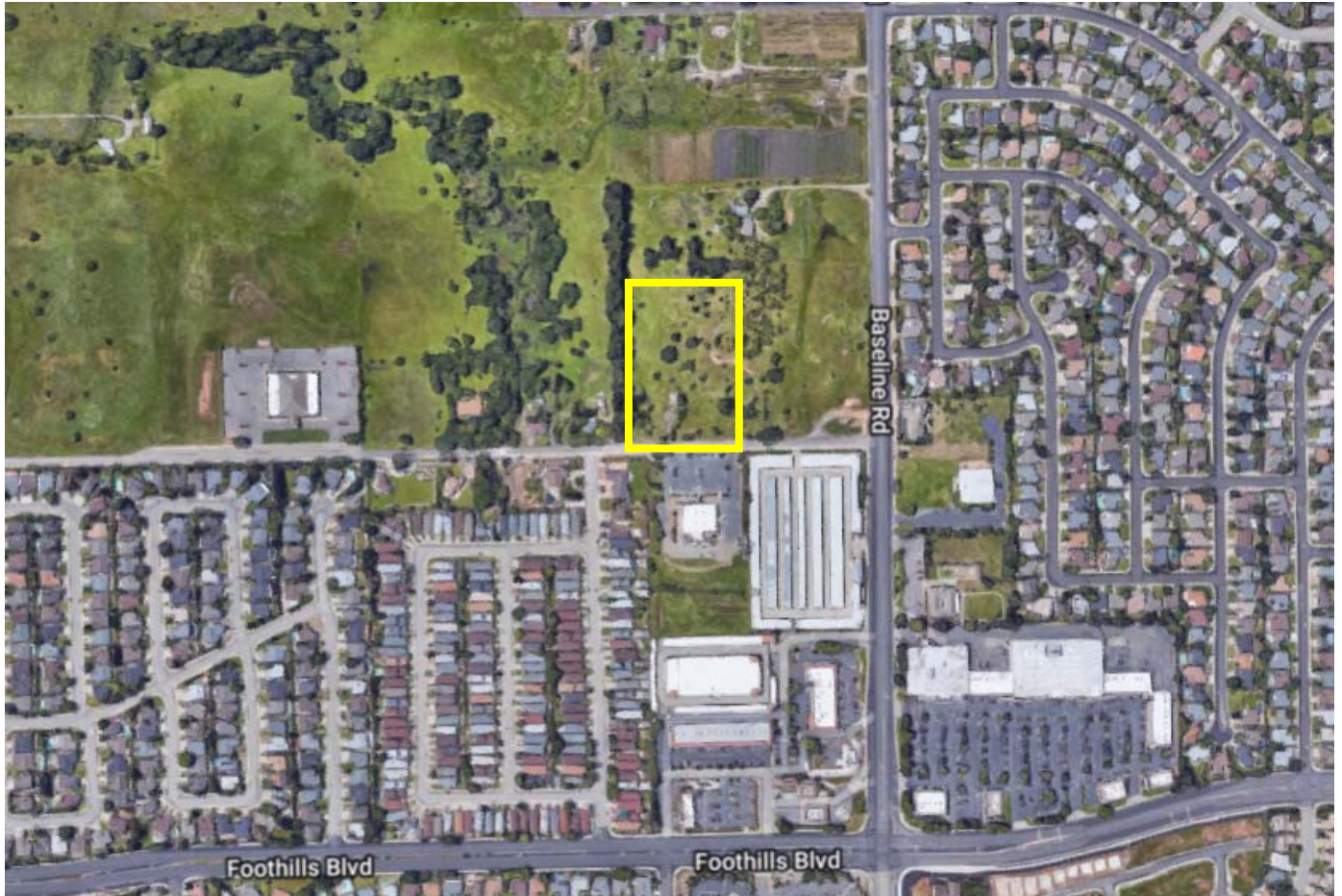


License # 00915268

9 Lot Subdivision T-Map LENDER OWNED! 8090 Brady Lane, Roseville, 95747



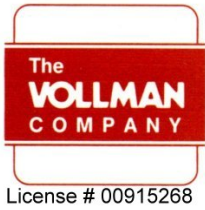
APN: 473-010-033
5.1 acres
Zoned: RS-AG-B-20
Rare Placer County Tentative Map
9 Lots - Approx. 1/2 acres each
Utilities to be verified with County
Price: \$875,000



License # 00915268

THE VOLLMAN COMPANY, INC.
COMMERCIAL REAL ESTATE BROKERAGE
1900 POINT WEST WAY, SUITE 161
SACRAMENTO, CA 95815-4706
916/929-2000 FAX 916/929-7857
www.thevollmancompany.com

For More Information:
DAN MINCHER | ALEX BYRD
916-833-3763 | 530-863-3188
dmincher@thevollmancompany.com
alexbyrd@thevollmancompany.com



9 Lot Subdivision T-Map LENDER OWNED! 8090 Brady Lane, Roseville, 95747

SITE SUMMARY

SUBJECT: 5.1 acres; 9 Tentative Map Lots

LOCATION: 8090 Brady Lane

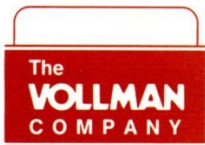
APN: 473-010-033

ZONING: RS-AG, B-20

PRICE: \$875,000 - **BRING ALL OFFERS!**

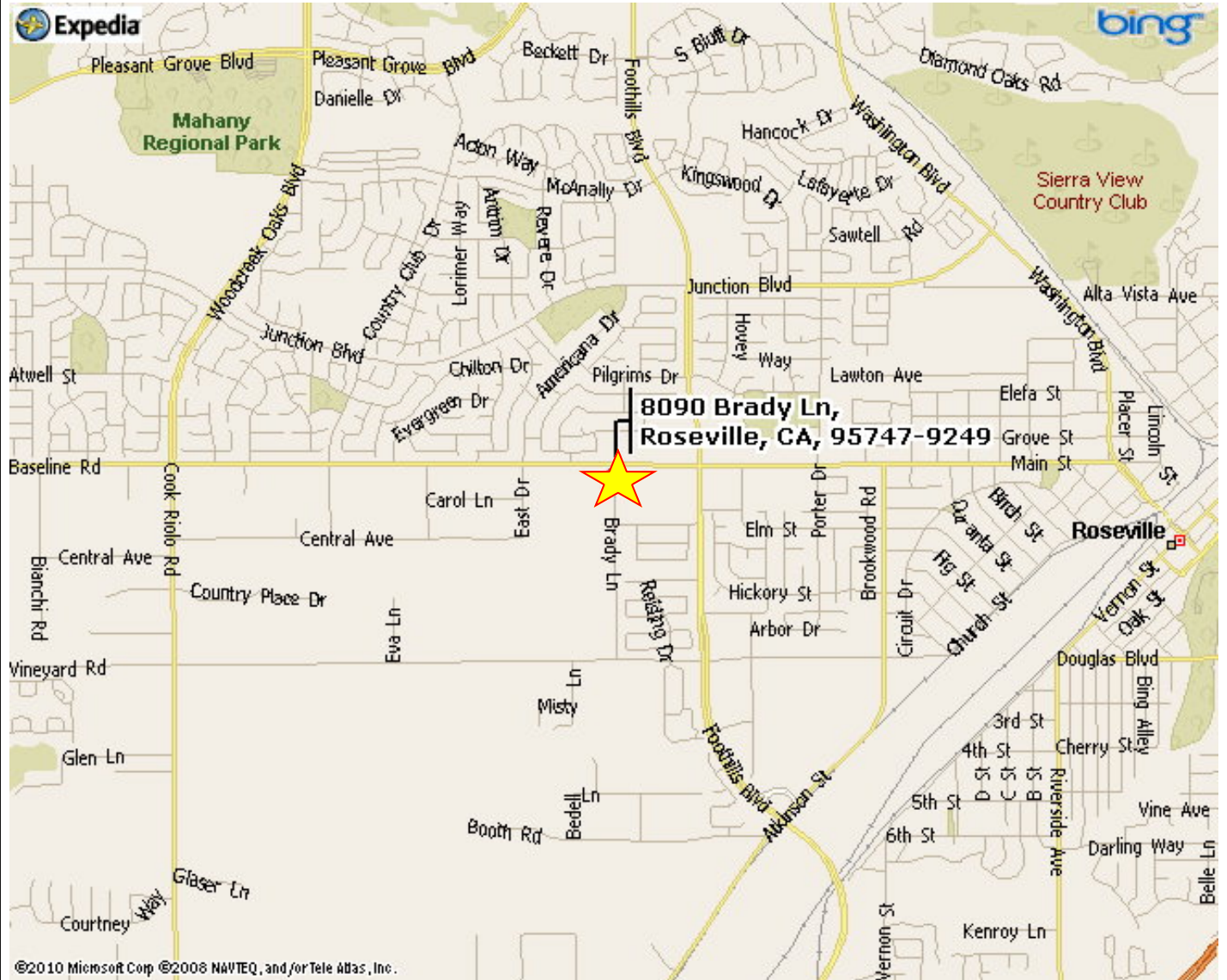
- Perfect opportunity for local builder to finish lots and build homes
- Good infill subdivision of large lots very close to Foothills Blvd. and Main Ave. just off Baseline Road.

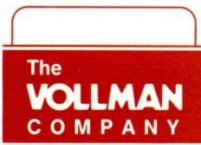




License # 00915268

Approved Tentative Map 9 Lots - Placer County 8090 Brady Lane, Roseville, 95747





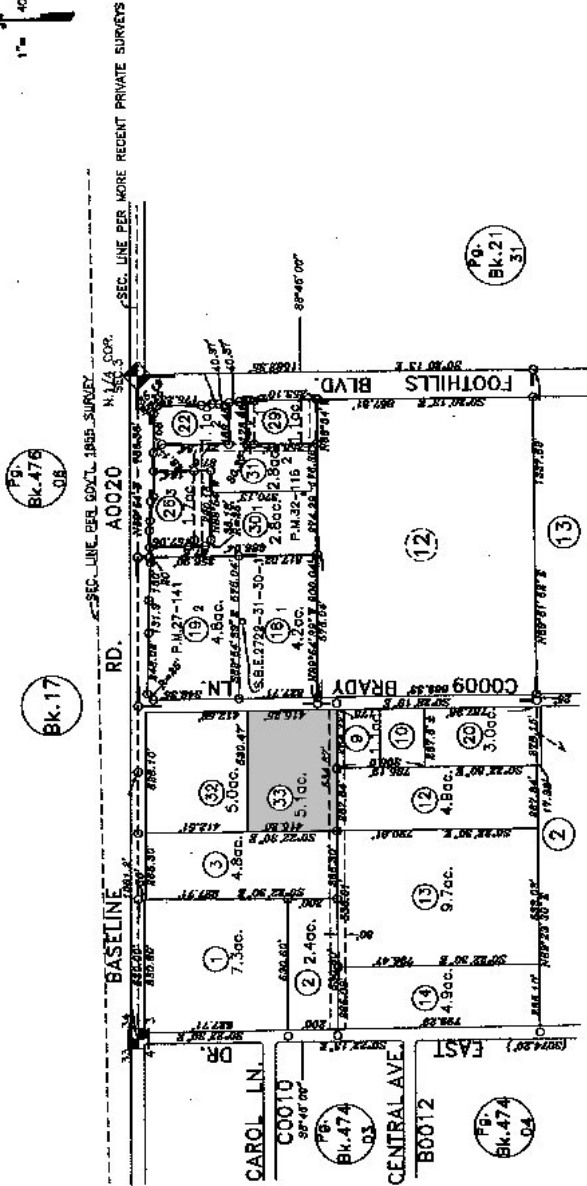
License # 00915268

Approved Tentative Map 9 Lots - Placer County 8090 Brady Lane, Roseville, 95747

473-01



POR SEC. 3, T. 10N, R. 6E, M.D.B. & M.
 Parcel M.O.R. Bk. 28, Pg. 3 (Eik Hills Plaza) Survey M.O.R. Bk. 11, Pg. 97
 Parcel M.O.R. Bk. 27, Pg. 14 Parcel M.O.R. Bk. 16, Pg. 37
 Parcel M.O.R. Bk. 32, Pg. 115, No. 02-04



Assessor's Map Bk. 473 Pg. 01
County of Placer, Calif.

NOTE
Assessor's Block Numbers Shown in Ellipse.
Assessor's Parcel Numbers Shown in Circle.
NOV 20 2006

NOTE
This map was prepared for assessment purposes only and is not intended to be used for any other purpose. It is not a legal document and should not be used to establish or establish precedence over local ordinances. Official information concerning size or use of any parcel should be obtained from recorded documents and local governing agencies.

NOTE
All distances on curved lines are chord measurements.

11-07-2006
02-10-2001 JAC
Page Redrawn Per BaseMap Information & Electronically.