

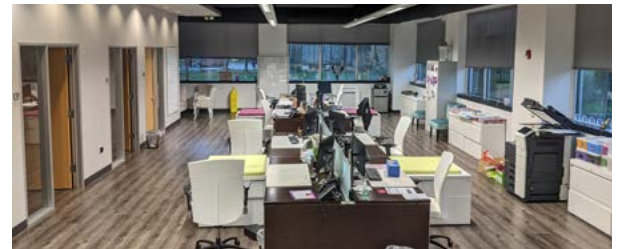
28 Eastmans Road

PARSIPPANY, NJ

NEWMARK
ASSOCIATES | CRE
CERTIFIEDWBE

For Sale

Premier Office Building for Sale Parsippany



First Time to Market!

Building Features

Approx. 47,500 SF Three Story Office Building for Sale

- Includes Lower Level of Approx. 9,000 SF
 - Climate Controlled Storage and Loading Dock
- Approx. 4.80 Acres
- Elevator to All Floors
- 150 Plus Parking Spots - 4 per 1,000 Ratio
- Fully Renovated in 2000
- Updated Marble Lobby
- Fully Sprinklered
- Updated Bathrooms
- Monument Signage on Eastmans Road
- Available Immediately

Space Features

- CAT 5 Wiring in Place to 150 Workstations
- Visibility on I-287 w/Potential Sign Opportunity
- Flexible Open Floor Plans
- Energy Efficient Building with Low Loss Factor
- “Plug & Play” Opportunity
- Multiple Private Offices, Work Stations, Cubicles
- Multiple Conference Rooms on All Floors
- Classroom Style Training Rooms
- Kitchen and Large Break Room
- Executive Suite with Private Bathroom and Shower

Strategically Located:

- Minutes from I-287, I-80 Routes 24, 10 and 46
- 25 Miles from Newark International Airport
- Less Than 1 Hour from Manhattan

Asking Price \$6,400,000

Link: [Zoning I-P-2 Professional, Lab, Medical](#)

Contact Our Exclusive Agent

Nancy Stanton - Tuckman

ntuckman@newmarkrealestate.com

Mobile: 973.216.7107

Office: 973.884.4444 ext. 19

2021 Newmark Associates, CRE, LLC. Information obtained from sources deemed to be reliable. However, no guarantee, warrant or representation is made as to accuracy of the information presented which is submitted subject to errors, omission, change of price, rental or other conditions, prior sale lease, financing or withdrawal without notice. Projections, opinions, assumptions or estimates are provided for example only, and may not represent current or future performance. Interested parties should consult their tax and legal advisors and conduct a thorough investigation of the property and any prospective transaction.



YEARS STRONG

7 E. Frederick Place Suite 500 Cedar Knolls New Jersey 07927 | 973.884.4444 | NewmarkRealEstate.com

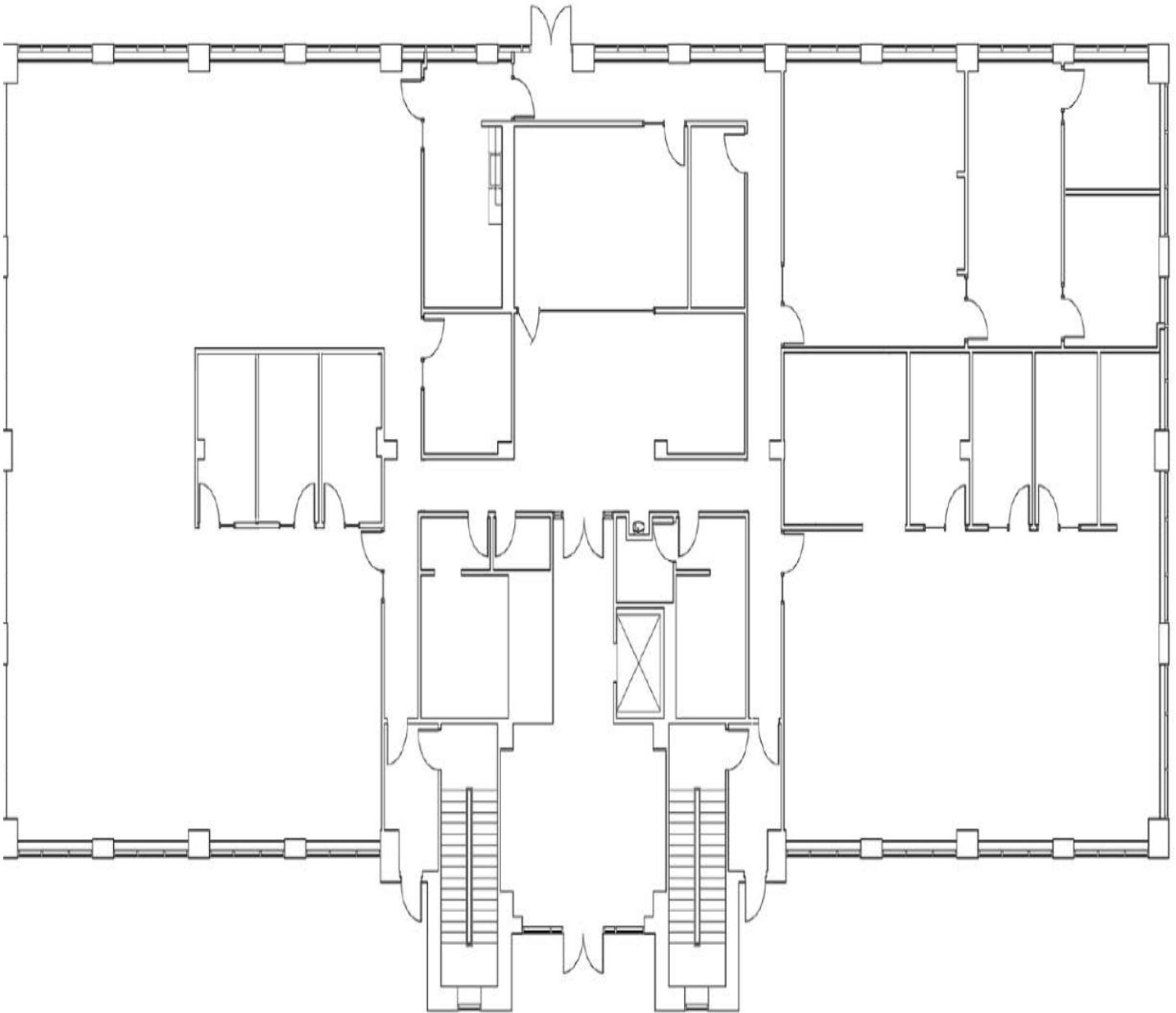
28 Eastmans Road

PARSIPPANY, NJ

NEWMARK
ASSOCIATES | CRE
CERTIFIEDWBE

For Sale

Floor Plans/First Floor



2021 Newmark Associates, CRE, LLC. Information obtained from sources deemed to be reliable. However, no guarantee, warrant or representation is made as to accuracy of the information presented which is submitted subject to errors, omission, change of price, rental or other conditions, prior sale lease, financing or withdrawal without notice. Projections, opinions, assumptions or estimates are provided for example only, and may not represent current or future performance. Interested parties should consult their tax and legal advisors and conduct a thorough investigation of the property and any prospective transaction.

7 E. Frederick Place Suite 500 Cedar Knolls New Jersey 07927 | 973.884.4444 | NewmarkRealEstate.com

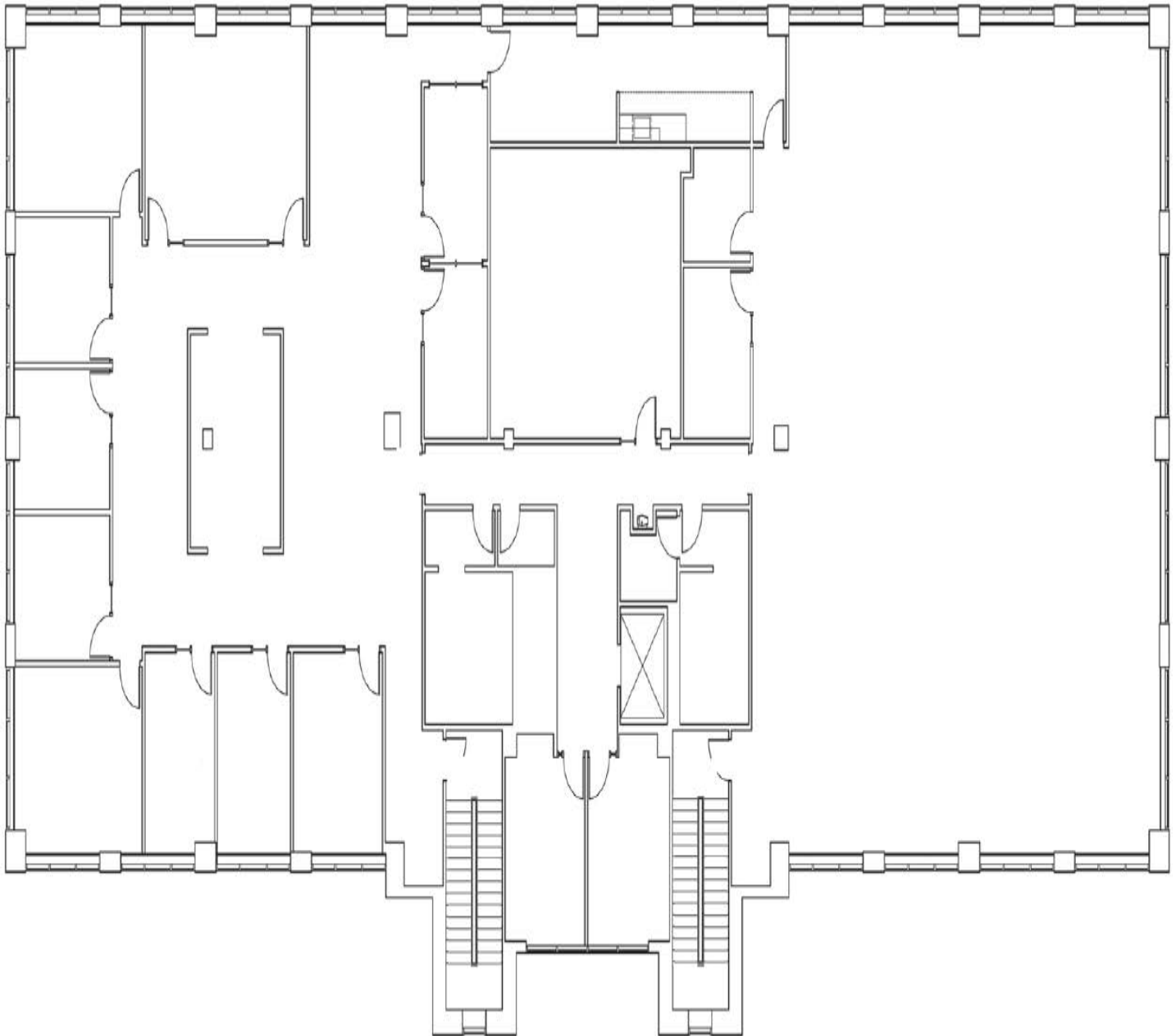
28 Eastmans Road

PARSIPPANY, NJ

NEWMARK
ASSOCIATES | CRE
CERTIFIEDWBE

For Sale

Floor Plans/Second Floor



2021 Newmark Associates, CRE, LLC. Information obtained from sources deemed to be reliable. However, no guarantee, warrant or representation is made as to accuracy of the information presented which is submitted subject to errors, omission, change of price, rental or other conditions, prior sale lease, financing or withdrawal without notice. Projections, opinions, assumptions or estimates are provided for example only, and may not represent current or future performance. Interested parties should consult their tax and legal advisors and conduct a thorough investigation of the property and any prospective transaction.

7 E. Frederick Place Suite 500 Cedar Knolls New Jersey 07927 | 973.884.4444 | NewmarkRealEstate.com

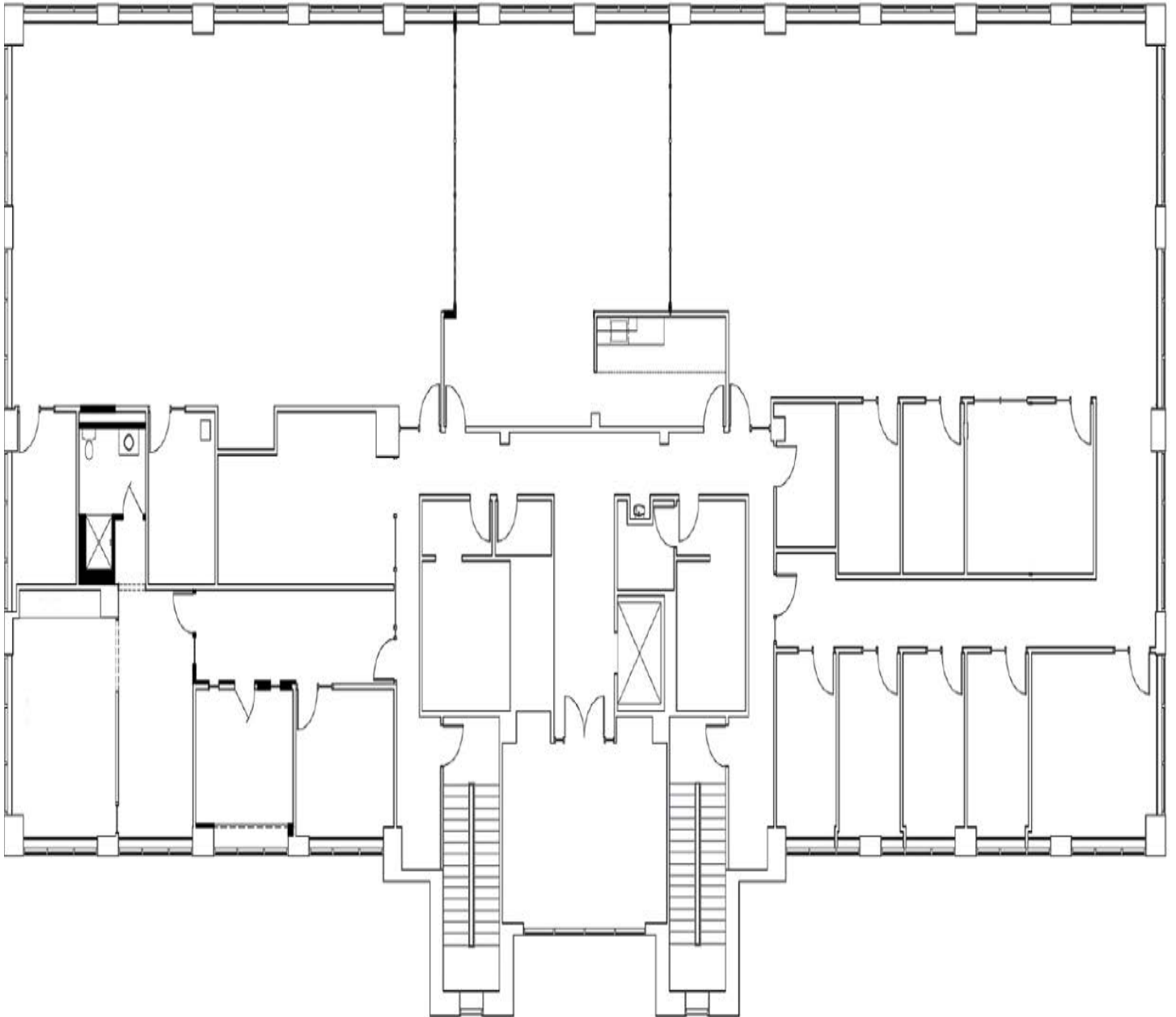
28 Eastmans Road

PARSIPPANY, NJ

NEWMARK
ASSOCIATES | CRE
CERTIFIEDWBE

For Sale

Floor Plans/Third Floor



2021 Newmark Associates, CRE, LLC. Information obtained from sources deemed to be reliable. However, no guarantee, warrant or representation is made as to accuracy of the information presented which is submitted subject to errors, omission, change of price, rental or other conditions, prior sale lease, financing or withdrawal without notice. Projections, opinions, assumptions or estimates are provided for example only, and may not represent current or future performance. Interested parties should consult their tax and legal advisors and conduct a thorough investigation of the property and any prospective transaction.

7 E. Frederick Place Suite 500 Cedar Knolls New Jersey 07927 | 973.884.4444 | NewmarkRealEstate.com

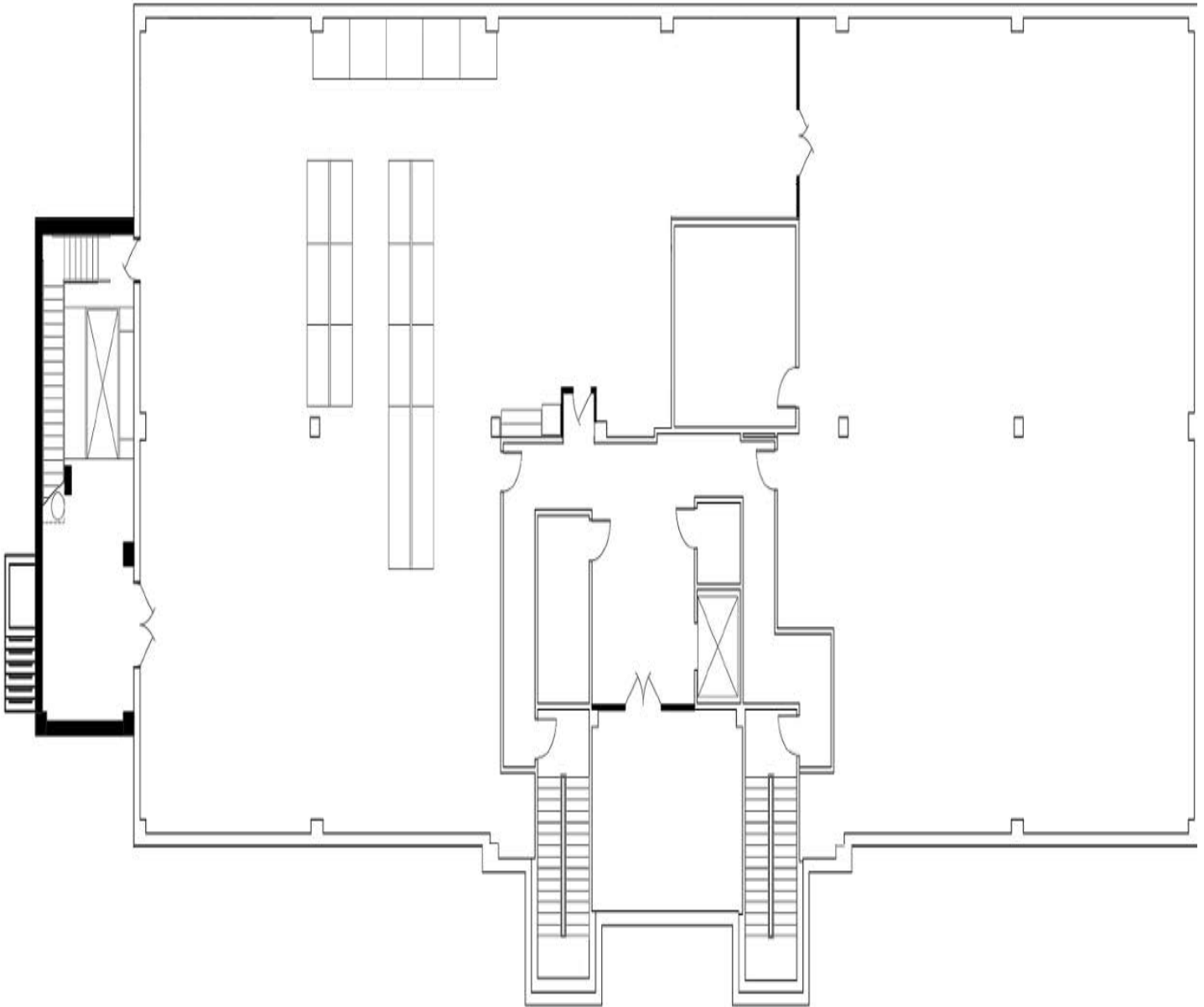
28 Eastmans Road

PARSIPPANY, NJ

NEWMARK
ASSOCIATES | CRE
CERTIFIEDWBE

For Sale

Floor Plans/Basement Floor



2021 Newmark Associates, CRE, LLC. Information obtained from sources deemed to be reliable. However, no guarantee, warrant or representation is made as to accuracy of the information presented which is submitted subject to errors, omission, change of price, rental or other conditions, prior sale lease, financing or withdrawal without notice. Projections, opinions, assumptions or estimates are provided for example only, and may not represent current or future performance. Interested parties should consult their tax and legal advisors and conduct a thorough investigation of the property and any prospective transaction.

7 E. Frederick Place Suite 500 Cedar Knolls New Jersey 07927 | 973.884.4444 | NewmarkRealEstate.com

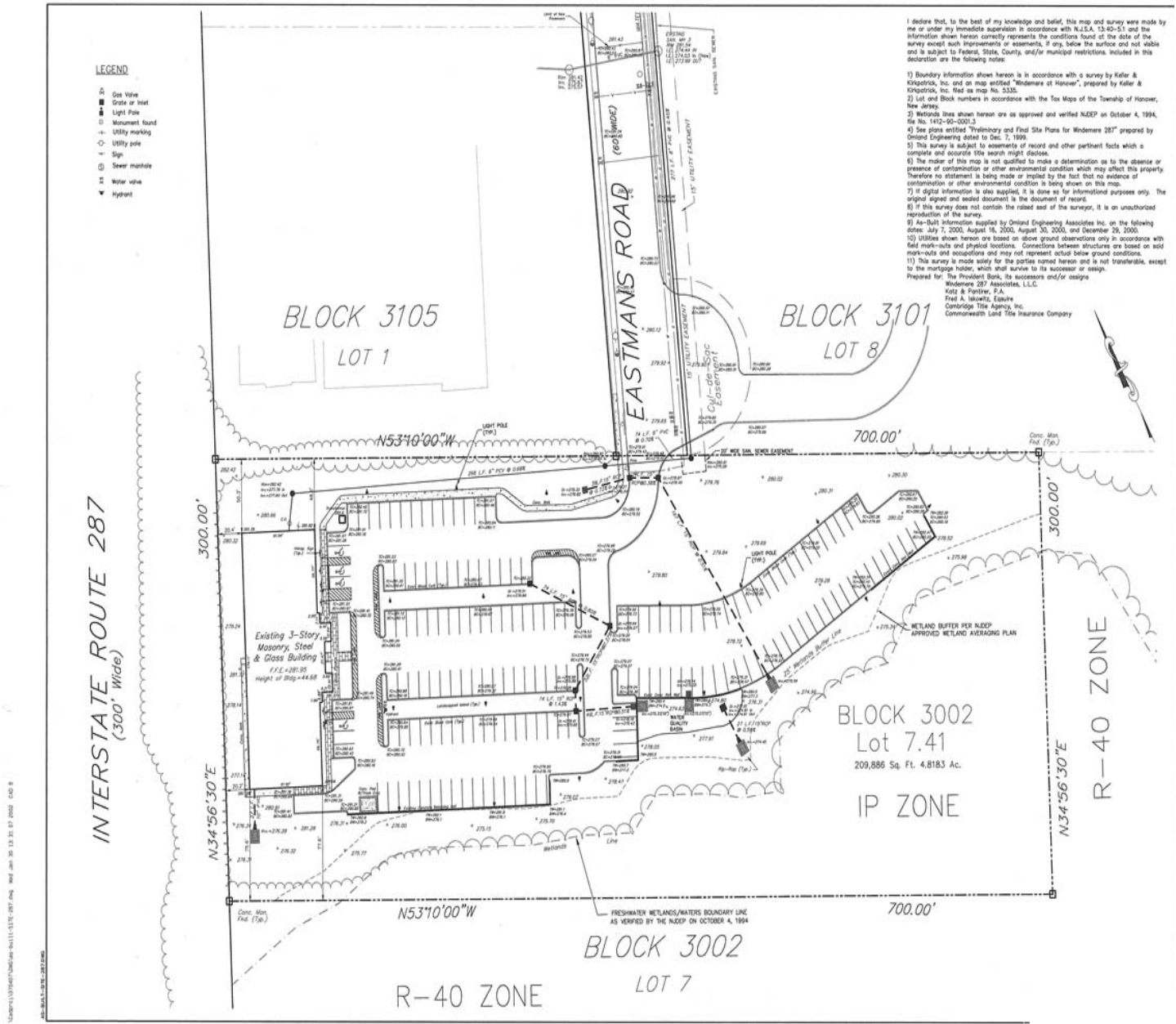
28 Eastmans Road

PARSIPPANY, NJ

NEWMARK
ASSOCIATES | CRE
CERTIFIED WBE

For Sale

Site Plan



2021 Newmark Associates, CRE, LLC. Information obtained from sources deemed to be reliable. However, no guarantee, warrant or representation is made as to accuracy of the information presented which is submitted subject to errors, omission, change of price, rental or other conditions, prior sale lease, financing or withdrawal without notice. Projections, opinions, assumptions or estimates are provided for example only, and may not represent current or future performance. Interested parties should consult their tax and legal advisors and conduct a thorough investigation of the property and any prospective transaction.