

FOR LEASE

**14-24 WASHINGTON STREET
MORRISTOWN, NJ**

PREMIER "MORRISTOWN GREEN" OFFICE LOCATION

AVAILABLE SPACE

- Suite 203: Approx 2500 Rentable sf
- Exposed Brick/LVT Flooring
- Four (4) Private Offices
- Open Bullpen
- Large Conference Room
- Storage Closet

**Lease Rate: \$30.00 psf
Plus Separately Metered Utilities**

PROPERTY FEATURES

- 45,000 sf Mixed-Use Property w/ Private Tenant Access
- Elevatored
- Common Area Restrooms
- Downtown Morristown Green Location
- Walking Distance to Restaurants, Banks, Shopping, Courthouse, Train Station, Bus Stops
- Street/Public Parking Available in Rear of Building
- Close Proximity to Major Highways: Routes 202, 24, 287, 10, 80

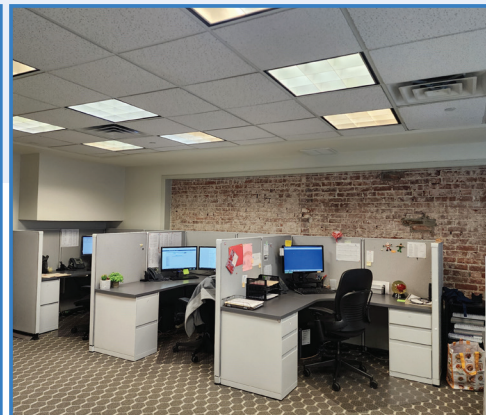
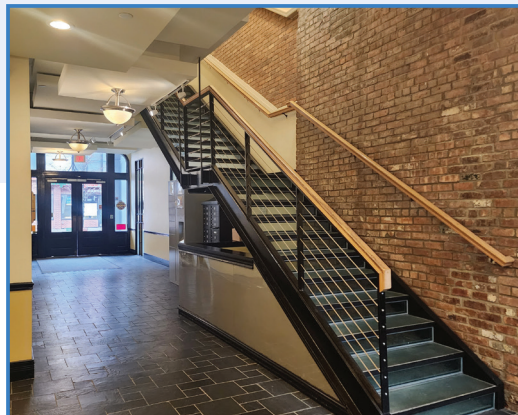
For more information contact:

HELENE ELBAUM

C: 201.320.3430

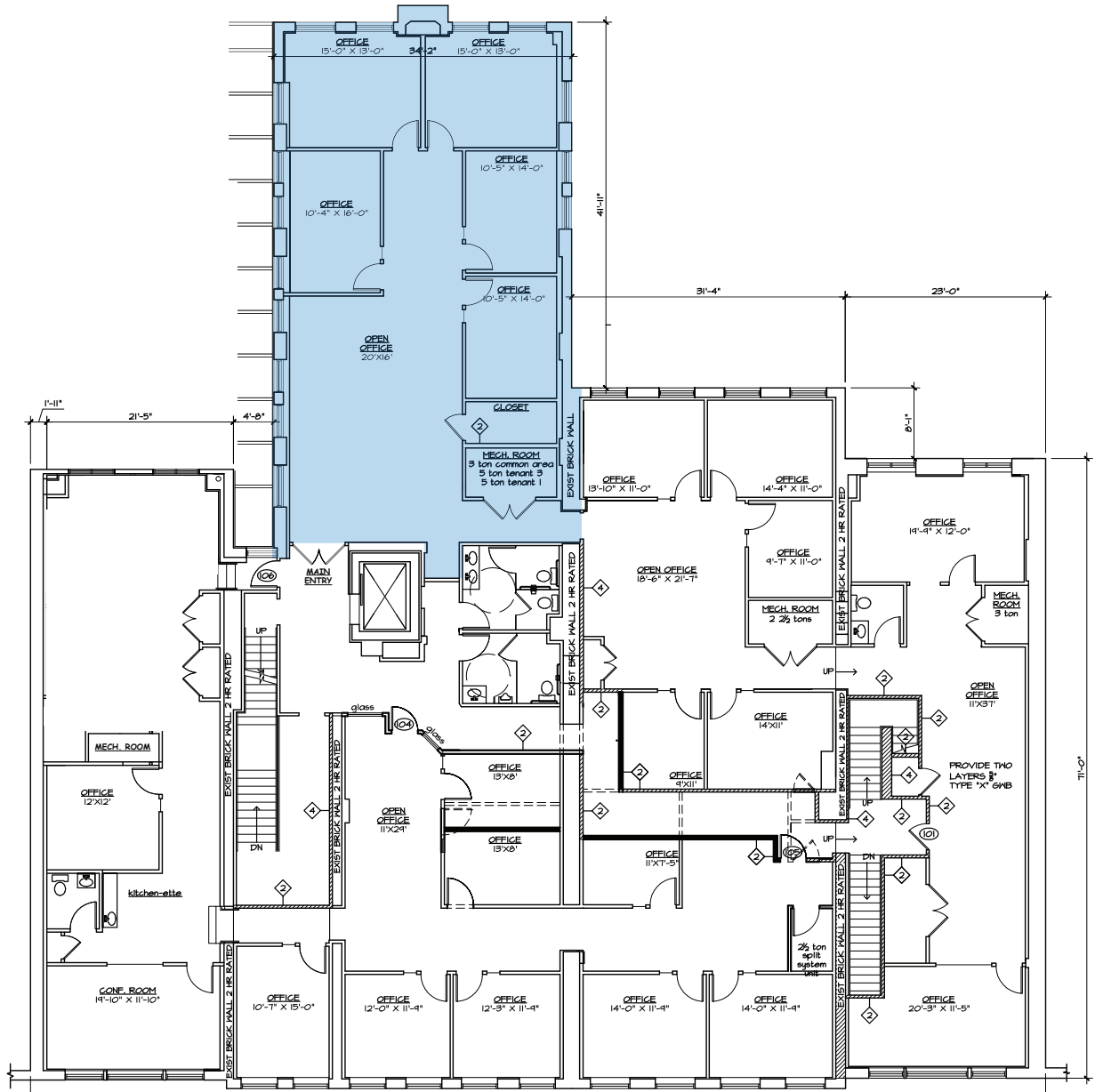
O: 973.884.4444 ext. 26

helbaum@newmarkrealestate.com



NewmarkRealEstate.com | 973.884.4444 | 7 E. Frederick Place Suite 500 Cedar Knolls New Jersey 07927

2026 Newmark Associates CRE. Information obtained from sources deemed to be reliable. However, no guarantee, warrant or representation is made as to accuracy of the information presented which is submitted subject to errors, omission, change of price, rental or other conditions, prior sale lease, financing or withdrawal without notice. Projections, opinions, assumptions or estimates are provided for example only, and may not represent current or future performance. Interested parties should consult their tax and legal advisors and conduct a thorough investigation of the property and any prospective transaction.



Floor Plan May Not Be Drawn To Scale.