

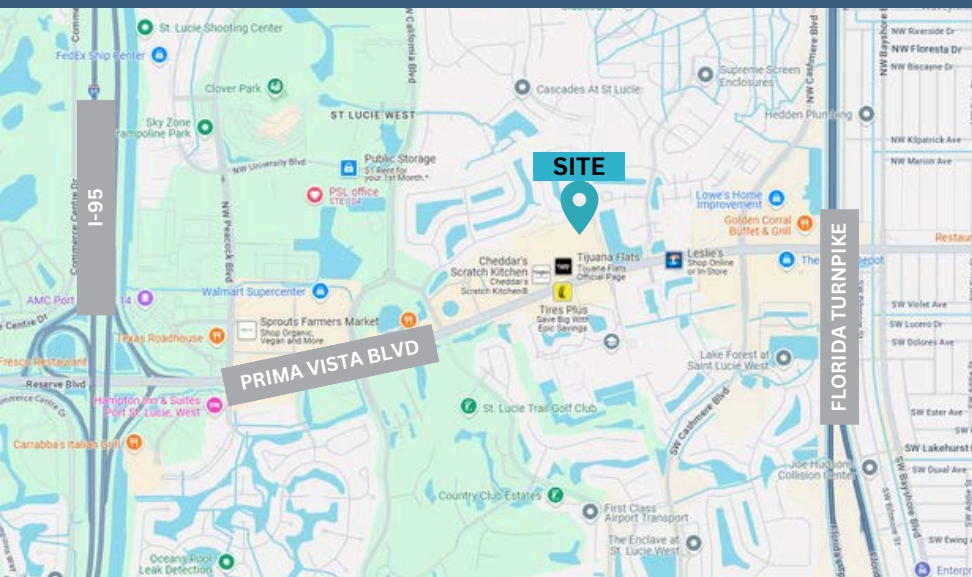
FOR LEASE

SHARED MEDICAL OFFICE



300 NW Bethany Drive, #320
Port St. Lucie, FL 34986

2,000+/- SQFT



- Shared medical space without the full-time commitment! Open to ideas.
- Layout includes: nurse station, large waiting room, and exam rooms with sinks
- Anchor businesses nearby in the heart of St. Lucie West
- Ideal for professionals, therapists, consultants, and others seeking a polished environment
- Zoning is General Commercial

Pricing Varies Depending on Days Needed

Call 772-237-9002 today!

TREC
Total Real Estate Consultants Inc.
www.trecfl.com

JOE PELAYO, CCIM, SIOR
BROKER & FOUNDER, TREC
trec@joepelayo.com
954.224.8773

CAROLYN NIEMCZYK, CFM
BROKER ASSOCIATE & PRESIDENT, TREC TREASURE COAST
carolynniemczyk@gmail.com
772.359.3242

HANNAH MCCLURE
COMMERCIAL & RESIDENTIAL REALTOR®
realtormcclure@gmail.com
772.237.9002

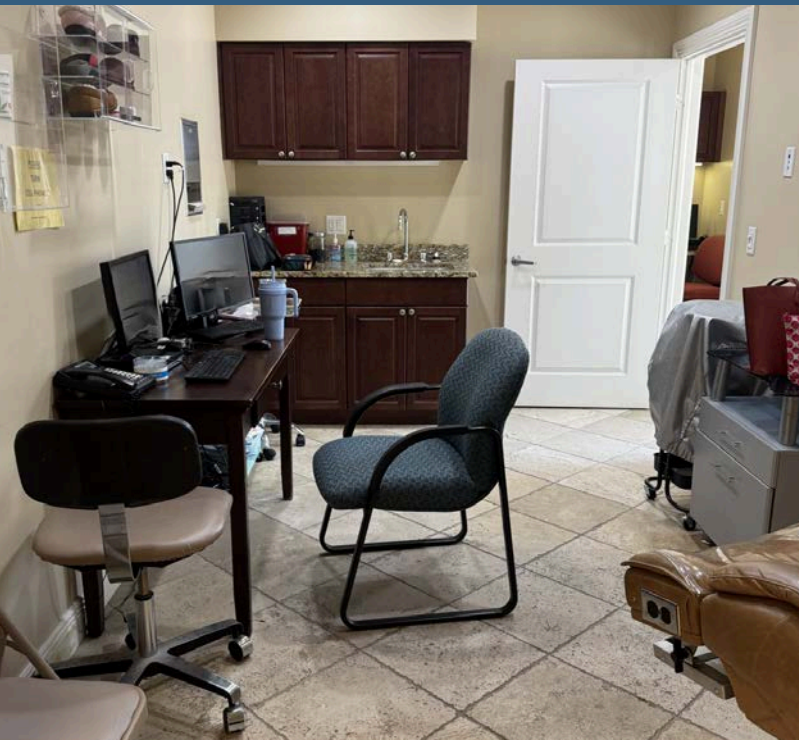
NOTICE: This information has been obtained from sources believed to be reliable but has not been verified. No warranty or representation, express or implied, is made as to the condition/legal adjustments of the property (or properties) referenced or as to the accuracy or completeness of the information contained, and same is submitted subject to errors, omissions, change of price, retail or other conditions, including but not limited to withdrawal without notice, and to any special listing conditions imposed by the property owner.

FOR LEASE

PROFESSIONAL COWORKING OFFICE OPPORTUNITY

300 NW Bethany Drive, #320
Port St. Lucie, FL 34986

2,000+/- SQFT



Pricing Varies Depending on
Days Needed

Flexible plans available:

1. **8 days/month** (Tuesday & Thursdays) - \$3,000/month
2. **14 days/month** (Tuesday, Thursdays, Saturday & Sundays) - \$4,000/month

Call 772-237-9002 today!



JOE PELAYO, CCIM, SIOR
BROKER &
FOUNDER, TREC

trec@joepelayo.com
954.224.8773



CAROLYN NIEMCZYK, CFM
BROKER ASSOCIATE &
PRESIDENT, TREC TREASURE COAST

carolynniemczyk@gmail.com
772.359.3242



HANNAH MCCLURE
COMMERCIAL &
RESIDENTIAL REALTOR®

realtormcclure@gmail.com
772.237.9002

NOTICE: This information has been obtained from sources believed to be reliable but has not been verified. No warranty or representation, express or implied, is made as to the condition/legal adjustments of the property (or properties) referenced or as to the accuracy or completeness of the information contained, and same is submitted subject to errors, omissions, change of price, retail or other conditions, including but not limited to withdrawal without notice, and to any special listing conditions imposed by the property owner.