

MEDICAL FOR LEASE

166 MAIN STREET (1ST FLOOR)
LINCOLN PARK, NJ

YOUR BRAND, YOUR FINISHES:
+/- 1100 SF MEDICAL LAYOUT READY FOR A MODERN REFRESH

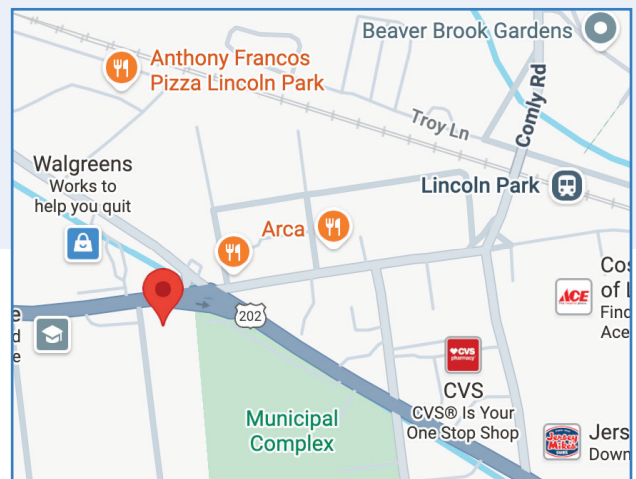
AVAILABLE SPACE

- First-floor location offers barrier-free access
- +/- 1100 sf fully built-out space
- Reception/waiting area
- Staff office
- Three exam rooms
- Designated lab area
- One ADA compliant restroom
- Storage closet

\$24.00 psf plus Tenant-paid electric

PROPERTY FEATURES

- Situated directly on Main Street
- Abundant on-site parking
- 24 hour access
- Handicapped accessible
- Close proximity to public transportation
- Easy access to Routes 23, 202, and I-287



For more information contact:

EBONY PARHAM

C: 732.236.6261

O: 973.884.4444 ext. 29

eparham@newmarkrealestate.com

ANNE O'LEARY

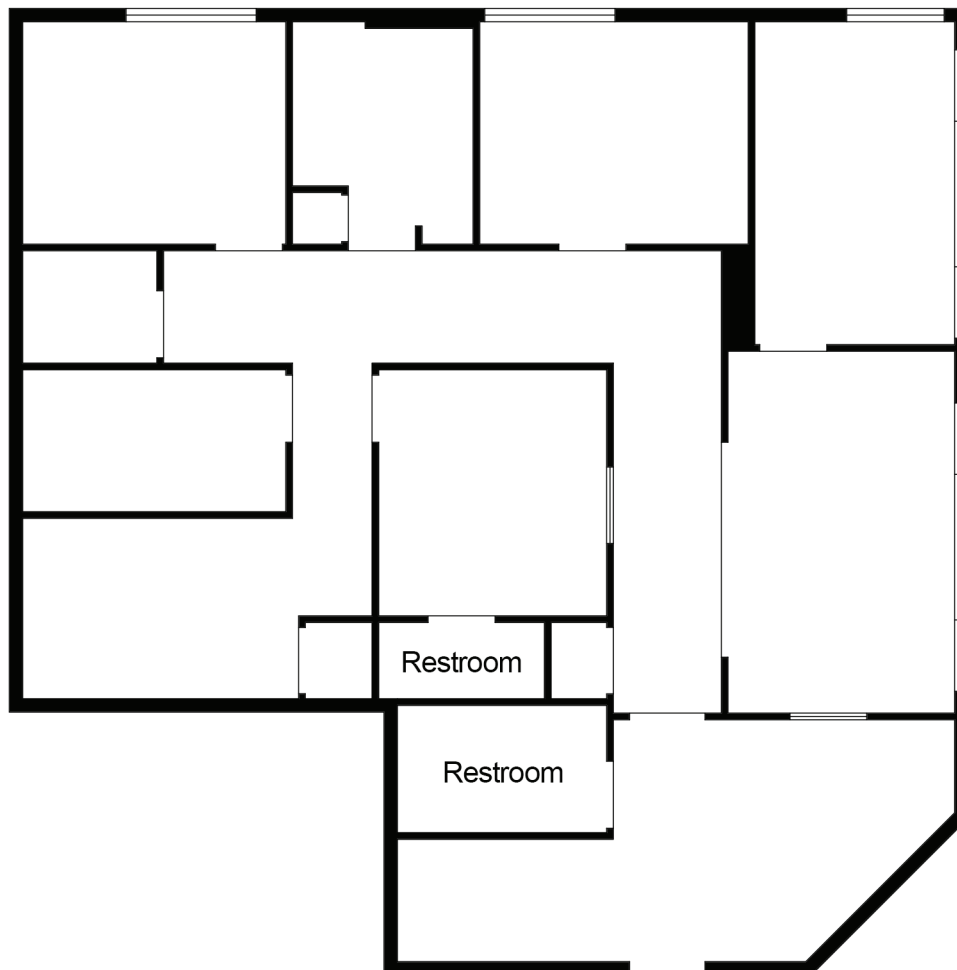
C: 973.464.5316

O: 973.884.4444 ext. 28

aoleary@newmarkrealestate.com

NewmarkRealEstate.com | 973.884.4444 | 7 E. Frederick Place Suite 500 Cedar Knolls New Jersey 07927

2025 Newmark Associates CRE. Information obtained from sources deemed to be reliable. However, no guarantee, warrant or representation is made as to accuracy of the information presented which is submitted subject to errors, omission, change of price, rental or other conditions, prior sale lease, financing or withdrawal without notice. Projections, opinions, assumptions or estimates are provided for example only, and may not represent current or future performance. Interested parties should consult their tax and legal advisors and conduct a thorough investigation of the property and any prospective transaction.



Floor Plan Not Drawn to Scale.