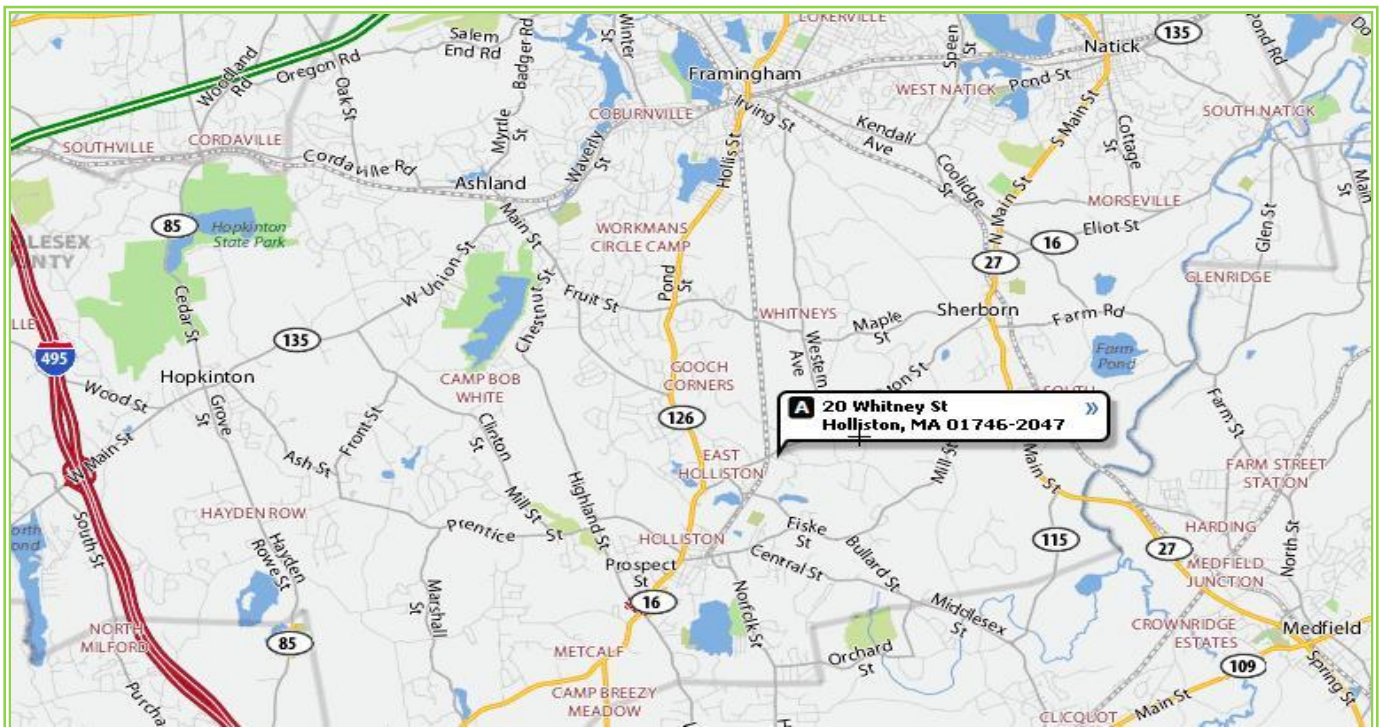




METROWEST COMMERCIAL R.E.

20 WHITNEY ST., UNIT 3 HOLLISTON, MA 1,560 SF INDUSTRIAL CONDO FOR LEASE



Listing Broker: LAUDY SOIFER

508-370-0003 – office ~ 508-667-7271 – cell

laudy@metrowestcre.com ~ www.metrowestcre.com

**20 WHITNEY ST.
HOLLISTON, MA**

Building Specifications:

Size: 60' W x 110' L
Type: Metal Building with Block Veneer
Electrical Service: 110/220
Sewer/ Water: Private Sewer, Public Water
Drive-Ins: 1
Floor Slab: 5"
Floor Load: 500 lbs/SF
Height Clearance: 18'
Zoning: INDUSTRIAL

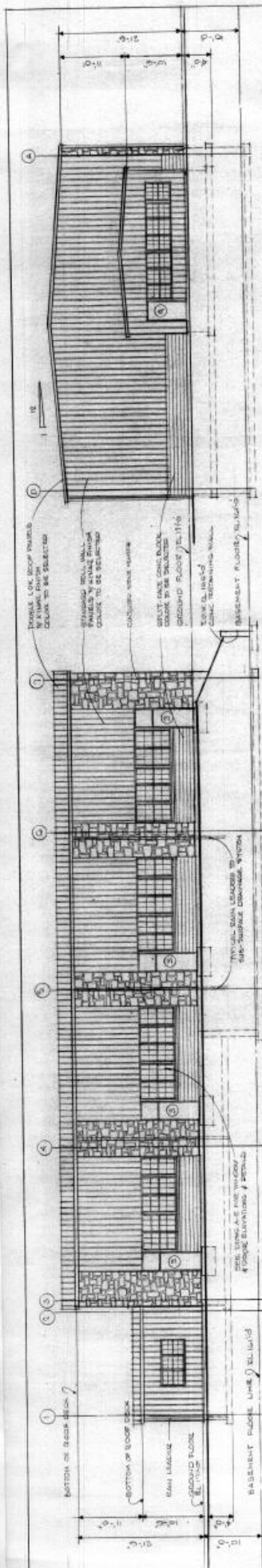
INDIVIDUAL UNIT SPECS:

Available: 1,560 s.f.
Heat: Ceiling mounted FHA Gas Heater in shop;
Electric baseboard in office
Door Size: Drive-In: 12' W x 14' H (Chain Rollup)
Electrical Service: 100 AMP; (Separately metered)
Office Finish: 10' W x 12' L
Sprinkler System: Wet
Bathrooms: 2
Parking: 5/ bay
Available: now

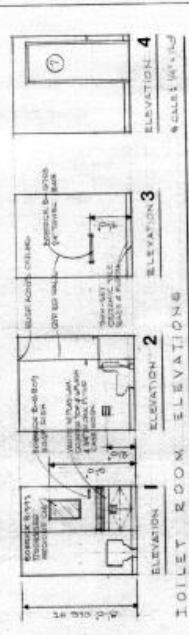
FOR LEASE \$2,975/month plus utilities

Listing Broker: LAUDY SOIFER
508-370-0003 – office ~ 508-667-7271 – cell
laudy@metrowestcre.com ~ www.metrowestcre.com

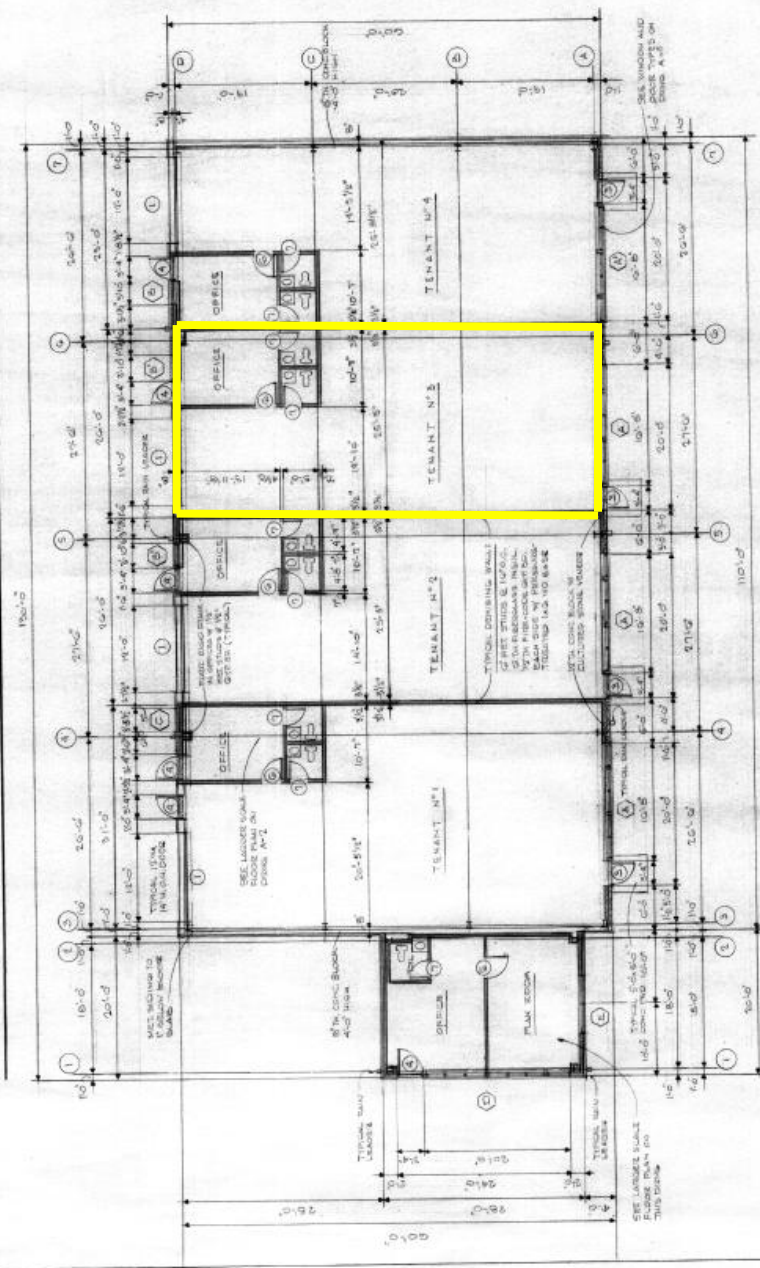
The above information is from sources deemed reliable but cannot be guaranteed to be completely accurate. Prospective Lessees are advised to verify information. MWC RE represents the Lessor. MWC RE does not co-broke with Principals nor recognize representation after the first showing.



SOUTH ELEVATION FACING WHITNEY ST. SCALE: 1/8" = 1'-0"



WEST ELEVATION SCALE: 1/8" = 1'-0"



GROUND FLOOR PLAN SCALE: 1/8" = 1'-0"

SEPARATE OFFICE FLOOR PLAN SCALE: 1/8" = 1'-0"

SECOND FLOOR PLAN SEPARATE OFFICE