

**FOR
LEASE**

CLASS "A" OFFICE IN THE HEART OF DOWNTOWN FORT LAUDERDALE



200 S Andrews Ave, Suite 602, Fort Lauderdale, FL 33301
Museum Plaza Building

3,300 +/- SQFT



- Located on the 6th floor of the 11-story Museum Plaza Building on Las Olas
- Walking distance from NSU Art Museum, FAU, Broward College, Broward County Main Library, and much more...
- Available for complete customization to Tenant's business
- Landlord open to providing 6 months FREE RENT (minimum 3 year lease)

**\$25 / SQFT | Asking rate does not include utilities
or building/expenses/services**

Call or text 954-224-8773 for more information!



JOE PELAYO, CCIM, SIOR
BROKER

trec@joepelayo.com

954.224.8773

TREC
Total Real Estate Consultants Inc.
www.trecfl.com

GEORGE PELAYO
BROKER ASSOCIATE

george@trecfl.com

954.482.1330



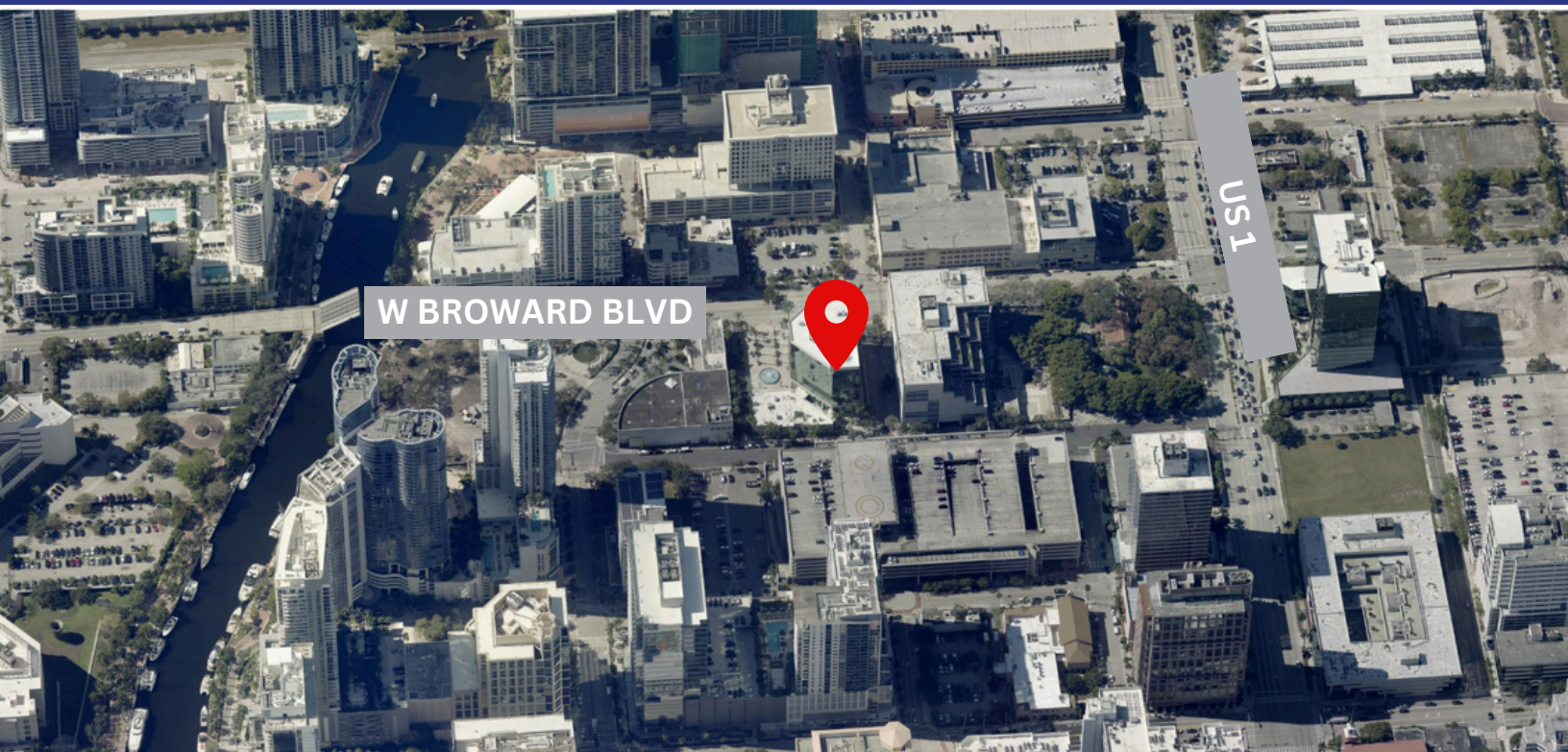
NOTICE: This information has been obtained from sources believed to be reliable but has not been verified. No warranty or representation, express or implied, is made as to the condition/legal adjustments of the property (or properties) referenced or as to the accuracy or completeness of the information contained, and same is submitted subject to errors, omissions, change of price, retail or other conditions, including but not limited to withdrawal without notice, and to any special listing conditions imposed by the property owner.

**FOR
LEASE**

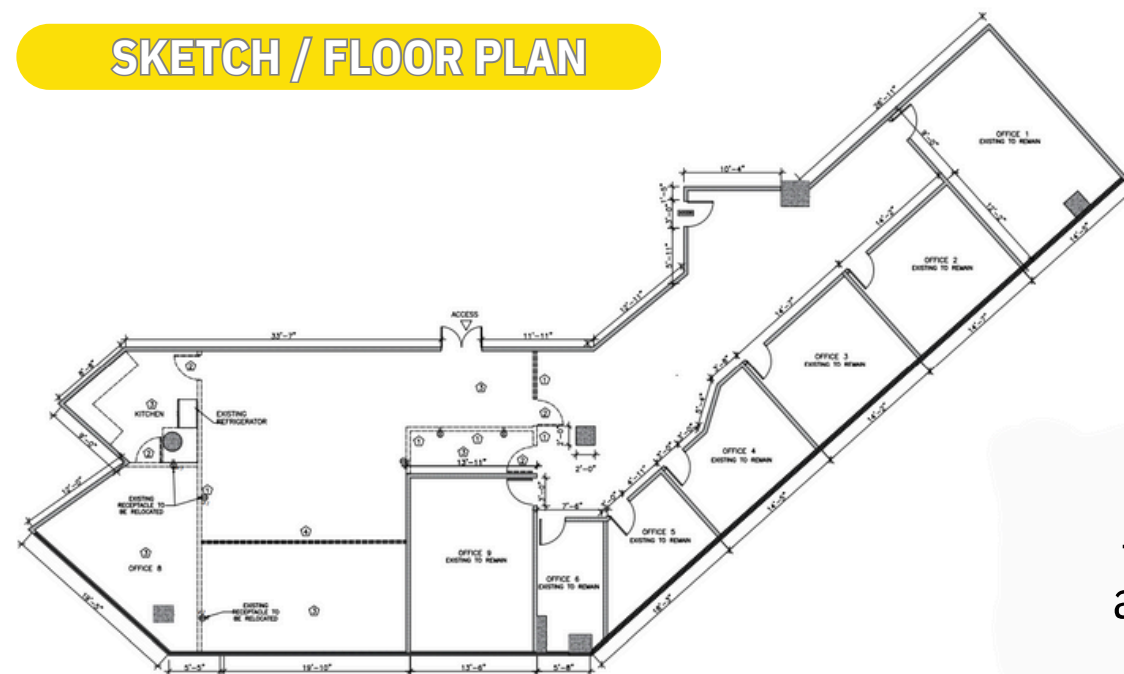
CLASS "A" OFFICE IN THE HEART OF DOWNTOWN FORT LAUDERDALE

200 S Andrews Ave, Suite 602, Fort Lauderdale, FL 33301
Museum Plaza Building

3,300 +/- SQFT



SKETCH / FLOOR PLAN



Scan QR code
for photos, sketches,
and more information!



JOE PELAYO, CCIM, SIOR
BROKER

trec@joepelayo.com

954.224.8773

TREC
Total Real Estate Consultants Inc.
www.trecfl.com

GEORGE PELAYO
BROKER ASSOCIATE

george@trecfl.com

954.482.1330



NOTICE: This information has been obtained from sources believed to be reliable but has not been verified. No warranty or representation, express or implied, is made as to the condition/legal adjustments of the property (or properties) referenced or as to the accuracy or completeness of the information contained, and same is submitted subject to errors, omissions, change of price, retail or other conditions, including but not limited to withdrawal without notice, and to any special listing conditions imposed by the property owner.