

FOR LEASE PROFESSIONAL OFFICE CONDO



**540 NW University Blvd, Unit 102,
Port Saint Lucie, FL 34986**

1,200+/- SQFT



- Located in professional hub
- Across the street from Clover Park (Baseball Stadium)
- First floor office for easy access
- Situated on lushly landscaped 6 acre campus
- Frontage on University Blvd and just minutes from I-95
- Includes private office, open work area, storage room, and restroom
- Plenty of parking available

Terms Negotiable

Call 772-237-9002!

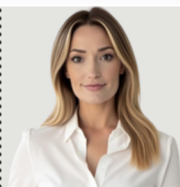
TREC
Total Real Estate Consultants Inc.
www.trecfl.com



JOE PELAYO, CCIM, SIOR
BROKER
Founder & CEO
trec@joepelayo.com
954.224.8773



CAROLYN NIEMCZYK, CFM
BROKER ASSOCIATE
St. Lucie County President
carolynniemczyk@gmail.com
772.359.3242



HANNAH MCCLURE
COMMERCIAL &
RESIDENTIAL REALTOR®
realtormcclure@gmail.com
772.237.9002

NOTICE: This information has been obtained from sources believed to be reliable but has not been verified. No warranty or representation, express or implied, is made as to the condition/legal adjustments of the property (or properties) referenced or as to the accuracy or completeness of the information contained, and same is submitted subject to errors, omissions, change of price, retail or other conditions, including but not limited to withdrawal without notice, and to any special listing conditions imposed by the property owner.

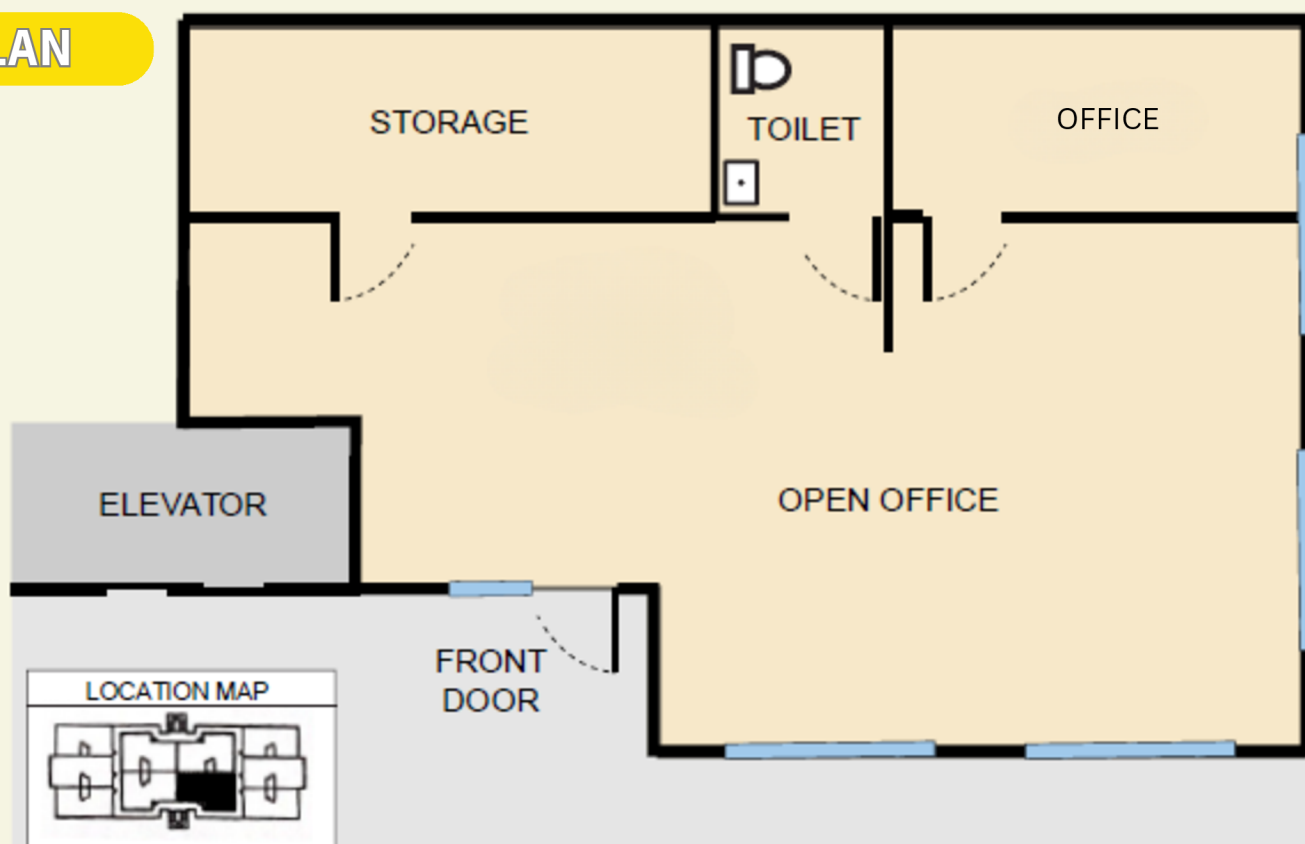
FOR LEASE PROFESSIONAL OFFICE CONDO

540 NW University Blvd, Unit 102,
Port Saint Lucie, FL 34986

1,200+/- SQFT



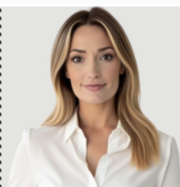
FLOOR PLAN



JOE PELAYO, CCIM, SIOR
BROKER
Founder & CEO
trec@joepelayo.com
954.224.8773



CAROLYN NIEMCZYK, CFM
BROKER ASSOCIATE
St. Lucie County President
carolynniemczyk@gmail.com
772.359.3242



HANNAH MCCLURE
COMMERCIAL &
RESIDENTIAL REALTOR®
realtormcclure@gmail.com
772.237.9002

NOTICE: This information has been obtained from sources believed to be reliable but has not been verified. No warranty or representation, express or implied, is made as to the condition/legal adjustments of the property (or properties) referenced or as to the accuracy or completeness of the information contained, and same is submitted subject to errors, omissions, change of price, retail or other conditions, including but not limited to withdrawal without notice, and to any special listing conditions imposed by the property owner.