

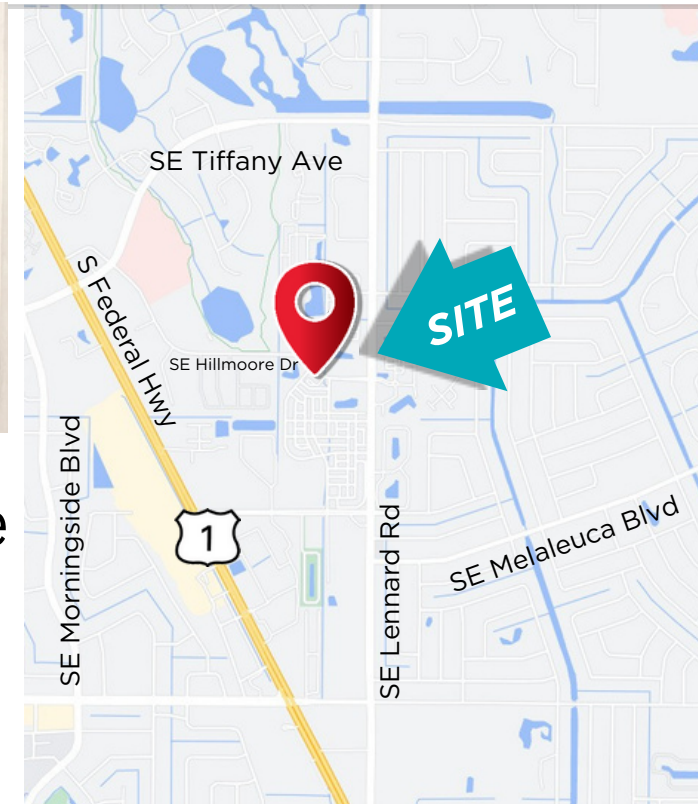
LEASE

1,746

±SQFT



2100 SE HILLMOOR DR, UNIT #204 PORT ST LUCIE FL 34952



- Second floor class A office space
- Near Saint Lucie Medical Center
- Generous parking
- Close proximity to US Highway 1



JOE PELAYO/CCIM, SIOR, C2EX
Broker / Founder & CEO
trec@joepelayo.com
954.224.8773

TREC
Total Real Estate
Consultants Inc.

CAROLYN NIEMCZYK/CFM
Broker Associate St. Lucie County President
carolynniemczyk@gmail.com
772.359.3242

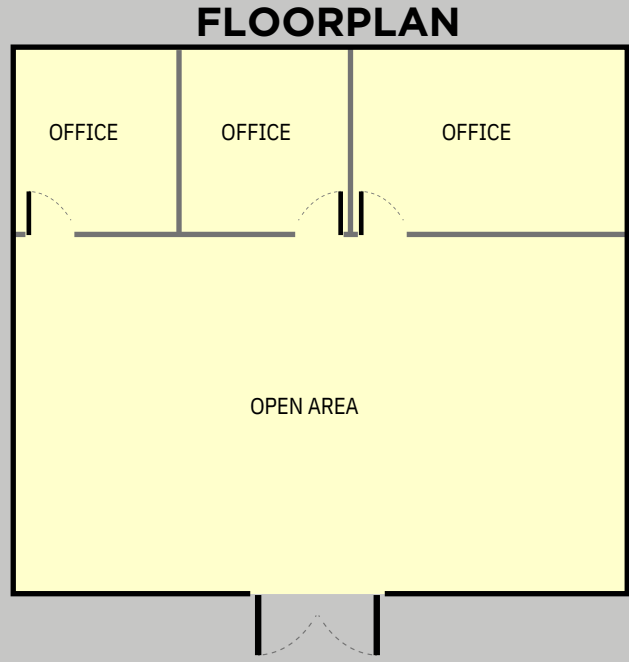


CONSUELO CRUZ
Commercial /Residential Realtor®
cruztrecl@gmail.com
786.246.2282



English Español Deutsch

NOTICE: This information has been obtained from sources believed to be reliable but has not been verified. No warranty or representation, express or implied, is made as to the condition/legal adjustments of the property (or properties) referenced or as to the accuracy or completeness of the information contained, and same is submitted subject to errors, omissions, change of price, retail or other conditions, including but not limited to withdrawal without notice, and to any special listing conditions imposed by the property owner.



JOE PELAYO/CCIM, SIOR, C2EX
Broker / Founder & CEO
trec@joepelayo.com
954.224.8773

TREC
Total Real Estate
Consultants Inc.

CAROLYN NIEMCZYK/CFM
Broker Associate St. Lucie County President
carolynniemczyk@gmail.com
772.359.3242



CONSUELO CRUZ
Commercial /Residential Realtor®
cruztrecl@gmail.com
786.246.2282

English Español Deutsch



NOTICE: This information has been obtained from sources believed to be reliable but has not been verified. No warranty or representation, express or implied, is made as to the condition/legal adjustments of the property (or properties) referenced or as to the accuracy or completeness of the information contained, and same is submitted subject to errors, omissions, change of price, retail or other conditions, including but not limited to withdrawal without notice, and to any special listing conditions imposed by the property owner.