

MEDICAL/PROFESSIONAL  
SPACES FOR LEASE  
**WEST ORANGE, NJ**  
99 NORTHFIELD AVENUE

**AVAILABLE SPACES**

**Suite 1**

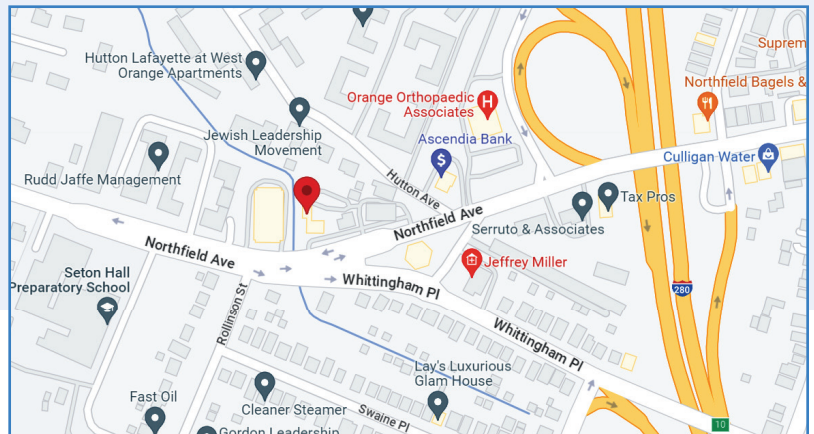
- Approximately 1000 sf
- 3 exam rooms and lab
- 1 private office
- Reception and private restroom
- Currently built out as dental office with new air compressor

**Suite 7**

- Approximately 1400 sf
- Potential for 6 private offices
- Large open area
- Kitchenette and 2 private restrooms
- Ideal for professional/medical offices including legal, financial, and physical therapy

**PROPERTY FEATURES**

- Approximately 4200 sf mixed use building
- On site parking
- Signage on building
- Close Proximity to Routes 280, 10, and Main Street
- Located at traffic light at Northfield Ave/Whittingham Ave
- OB-1 Zone



For more information contact:

**JEANNETTE MELILLO**

C: 862.227.6464

O: 973.884.4444 ext. 39

[jmelillo@newmarkrealestate.com](mailto:jmelillo@newmarkrealestate.com)

**JACK MAIER**

C: 862.200.0763

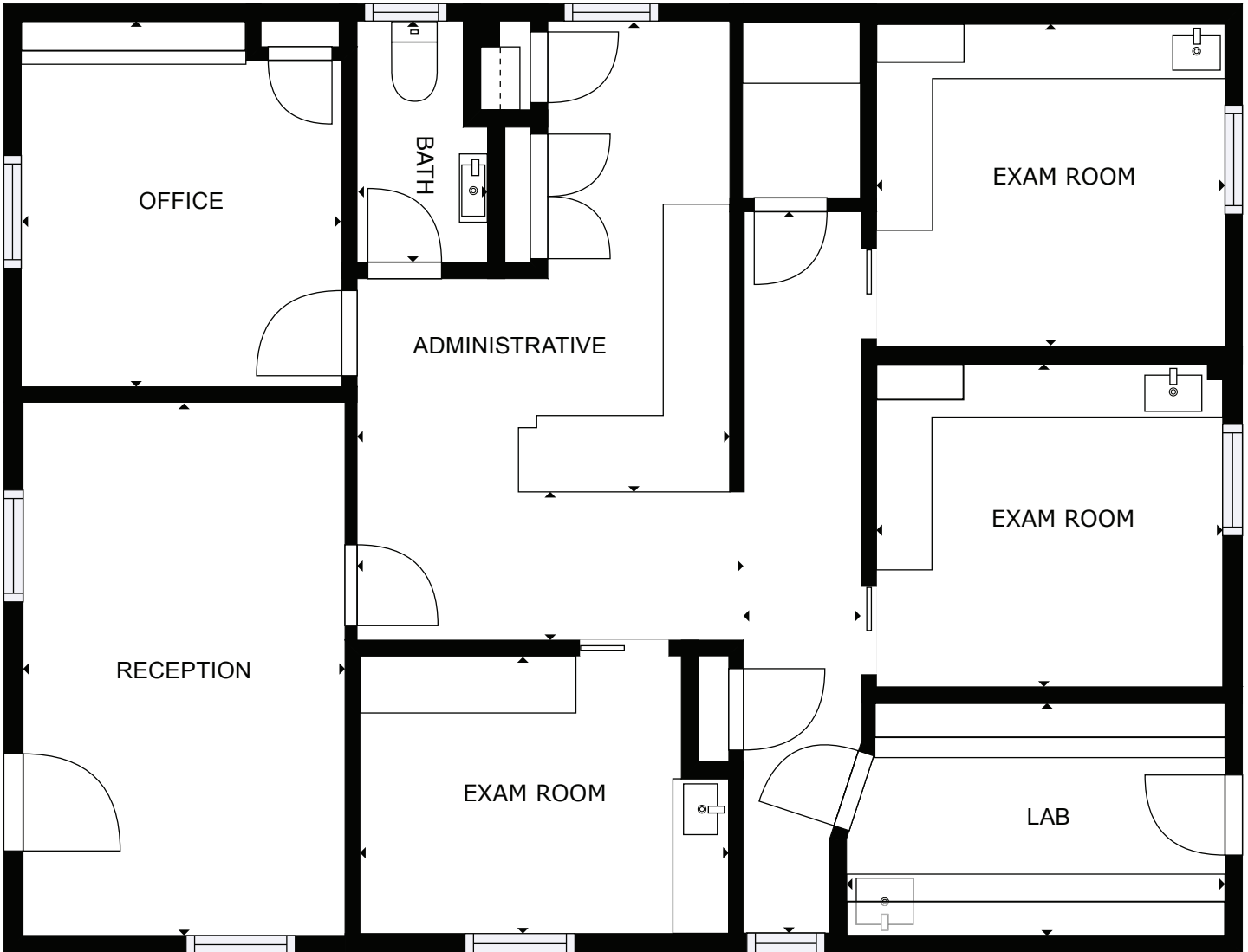
O: 973.884.4444 ext. 32

[jmaier@newmarkrealestate.com](mailto:jmaier@newmarkrealestate.com)

NewmarkRealEstate.com | 973.884.4444 | 7 E. Frederick Place Suite 500 Cedar Knolls New Jersey 07927

2023 Newmark Associates CRE. Information obtained from sources deemed to be reliable. However, no guarantee, warrant or representation is made as to accuracy of the information presented which is submitted subject to errors, omission, change of price, rental or other conditions, prior sale lease, financing or withdrawal without notice. Projections, opinions, assumptions or estimates are provided for example only, and may not represent current or future performance. Interested parties should consult their tax and legal advisors and conduct a thorough investigation of the property and any prospective transaction.

## Suite 1 Floor Plan



Floor Plan Not Drawn to Scale

## Suite 7 Floor Plan



**Floor Plan Not Drawn to Scale**