

FOR LEASE

DOWNTOWN MORRISTOWN

10 WILMOT STREET

FITNESS STUDIO/PERSONAL CARE SPACE FOR LEASE

AVAILABLE SPACE

- Approx 3000 sf
- Private entrance plus employee entrance
- Large multi-purpose room
- Two (2) bathrooms with shower facilities
- Locker area
- Two (2) private offices
- Private mirrored studio
- Ideal for ANY fitness use including training/ pilates/yoga/spinning, PT, massage, acupuncture, chiropractic, personal care (spa/hair)

Asking rental rate: \$22.00 psf NNN

PROPERTY FEATURES

- Three (3) story mixed use property
- Municipal parking available
- Monument signage
- Walking distance to NYC bound NJT train station, bus stop, restaurants, banking
- One block from Morristown Green
- ½ mile from Route 287 with direct access to Routes 80/24/78

For more information contact:

HELENE ELBAUM

C: 201.320.3430

O: 973.884.4444 ext. 26

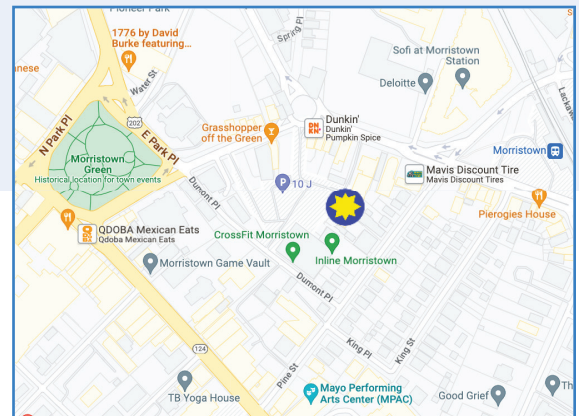
helbaum@newmarkrealestate.com

MARJORIE DORNE MURPHY

C: 973.722.2979

O: 973.884.4444 ext. 14

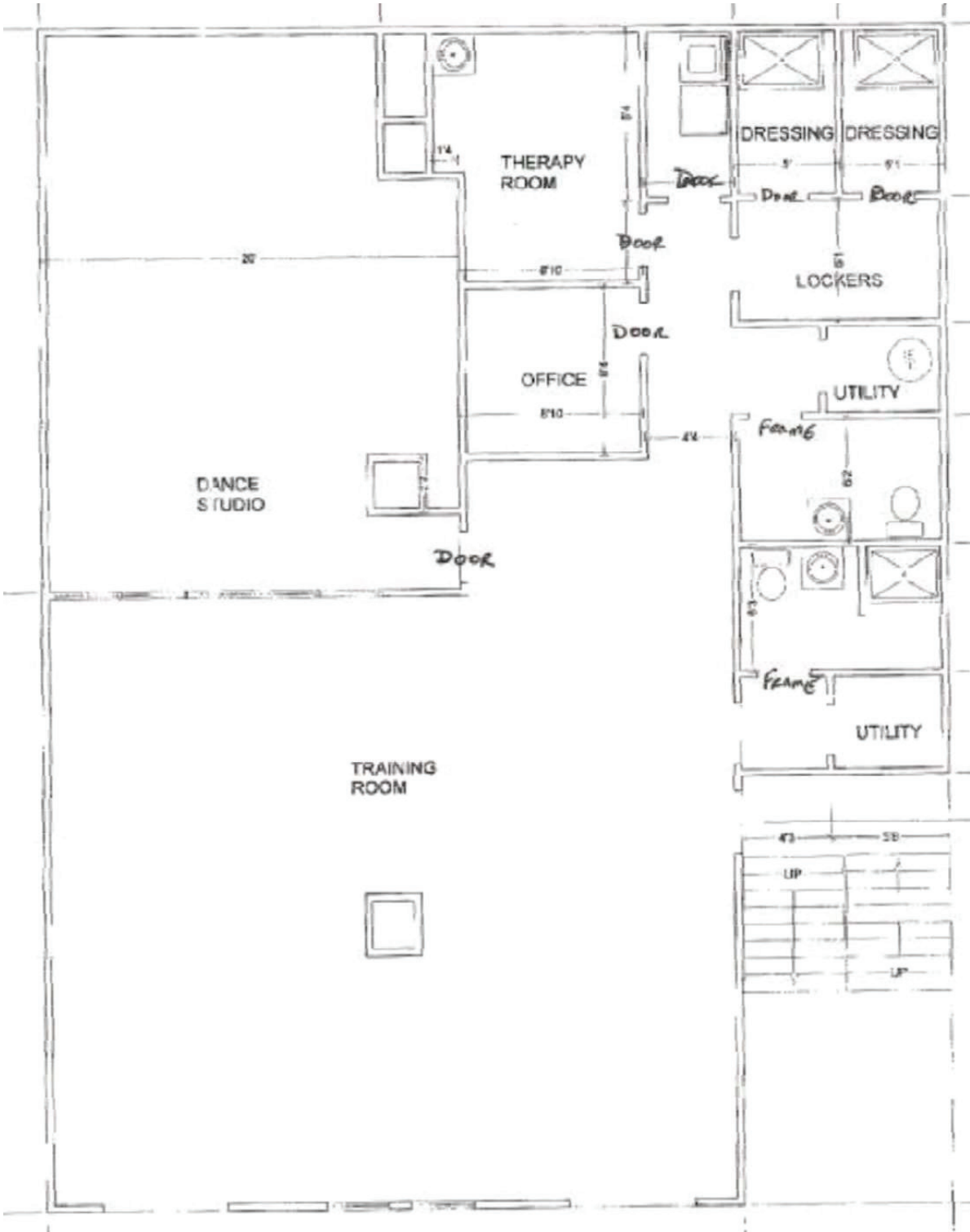
mmurphy@newmarkrealestate.com



NewmarkRealEstate.com | 973.884.4444 | 7 E. Frederick Place Suite 500 Cedar Knolls New Jersey 07927

2023 Newmark Associates CRE. Information obtained from sources deemed to be reliable. However, no guarantee, warrant or representation is made as to accuracy of the information presented which is submitted subject to errors, omission, change of price, rental or other conditions, prior sale lease, financing or withdrawal without notice. Projections, opinions, assumptions or estimates are provided for example only, and may not represent current or future performance. Interested parties should consult their tax and legal advisors and conduct a thorough investigation of the property and any prospective transaction.

First Level Floorplan - Gym



Floor Plan Not Drawn to Scale.