

OFFICE WAREHOUSE

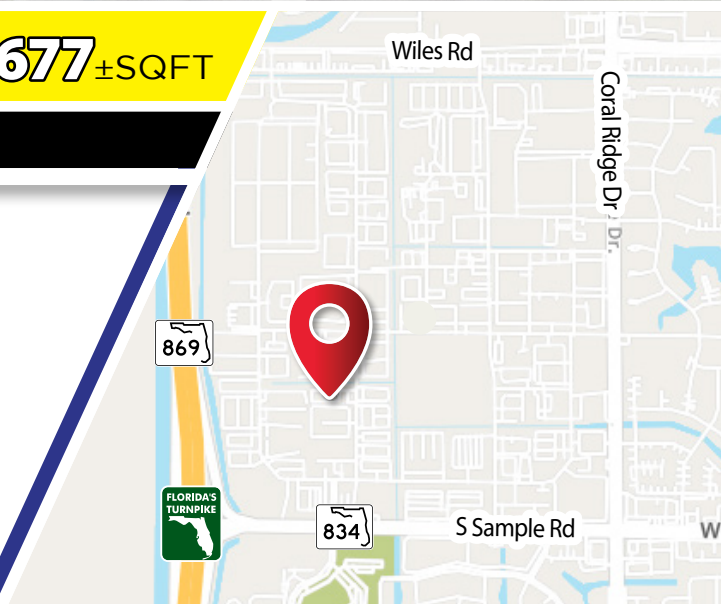
FOR LEASE



1,677 ±SQFT

3784 NW 124TH AVE, CORAL SPRINGS FL 33065

- Coral Springs Corporate Park
- Office warehouse condo unit
- Two stories high
- Roll up garage Door (10'W x 10'H)
- Year built 2005
- Impact Glass Windows 2nd Floor
- Hurricane Shutters 1st Floor



\$3,400 /Month
+ Sales Tax



JOE PELAYO, CCIM, SIOR, C2EX
BROKER
trec@joepelayo.com
954.224.8773

TREC
Total Real Estate
Consultants Inc.
www.trecfl.com
954.341.3294

GEORGE PELAYO, RENE, MRP
BROKER ASSOCIATE
george@trecfl.com
954.482.1330

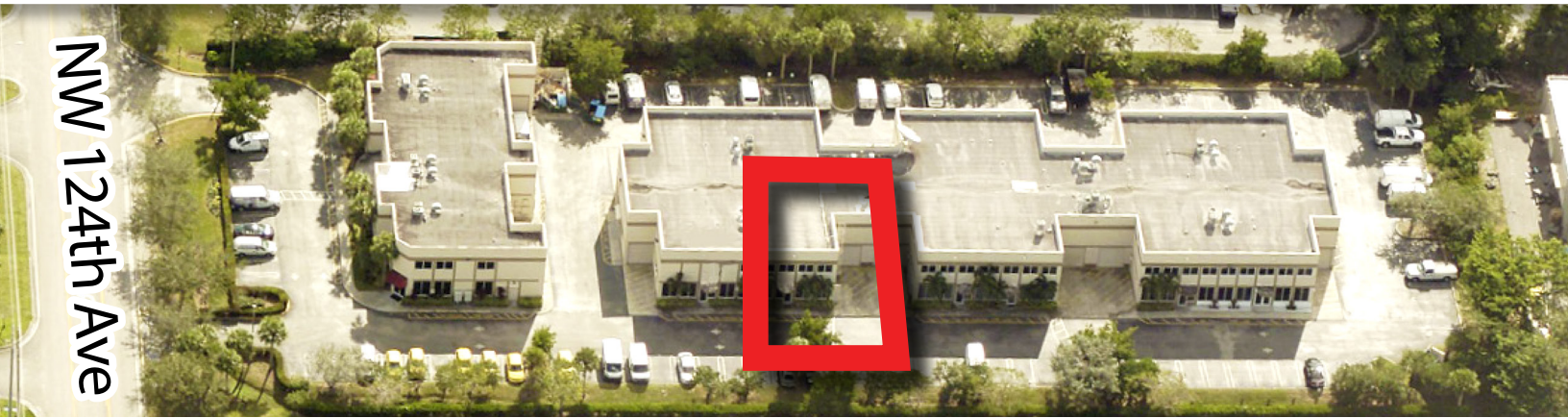


NOTICE: The information contained herein has been obtained from sources deemed reliable but has not been verified and no guarantee, warranty or representation, either express or implied, is made with respect to such information. Terms of sale or lease and availability are subject to change or withdrawal without notice. This information has been obtained from sources believed to be reliable but has not been verified.

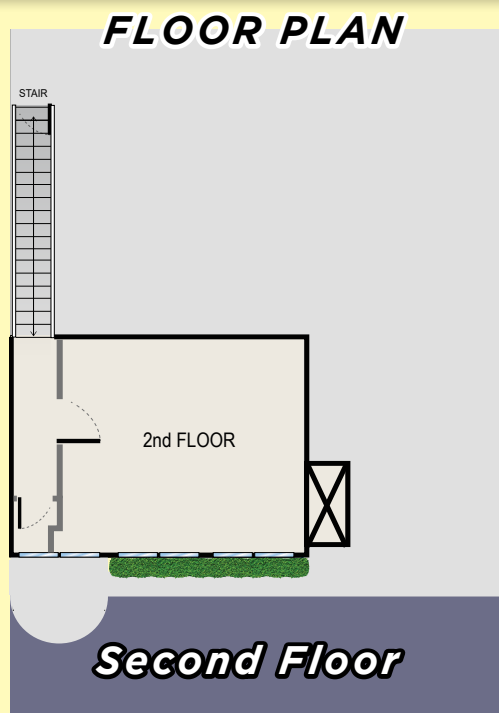
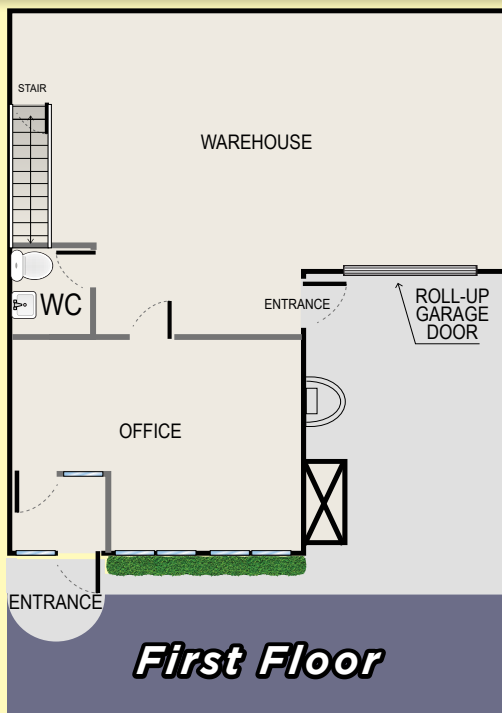
OFFICE WAREHOUSE

FOR LEASE

NW 124th Ave



3784 NW 124TH AVE, CORAL SPRINGS FL 33065



JOE PELAYO, CCIM, SIOR, C2EX
BROKER
trec@joepelayo.com
954.224.8773

TREC
Total Real Estate
Consultants Inc.
www.trecfl.com
954.341.3294

GEORGE PELAYO, RENE, MRP
BROKER ASSOCIATE
george@trecfl.com
954.482.1330



NOTICE: The information contained herein has been obtained from sources deemed reliable but has not been verified and no guarantee, warranty or representation, either express or implied, is made with respect to such information. Terms of sale or lease and availability are subject to change or withdrawal without notice. This information has been obtained from sources believed to be reliable but has not been verified.