

# Tustin Medical Building

14591 Newport Ave, Tustin, California 92780



## Contact Us

**Steven R. Lewallen**

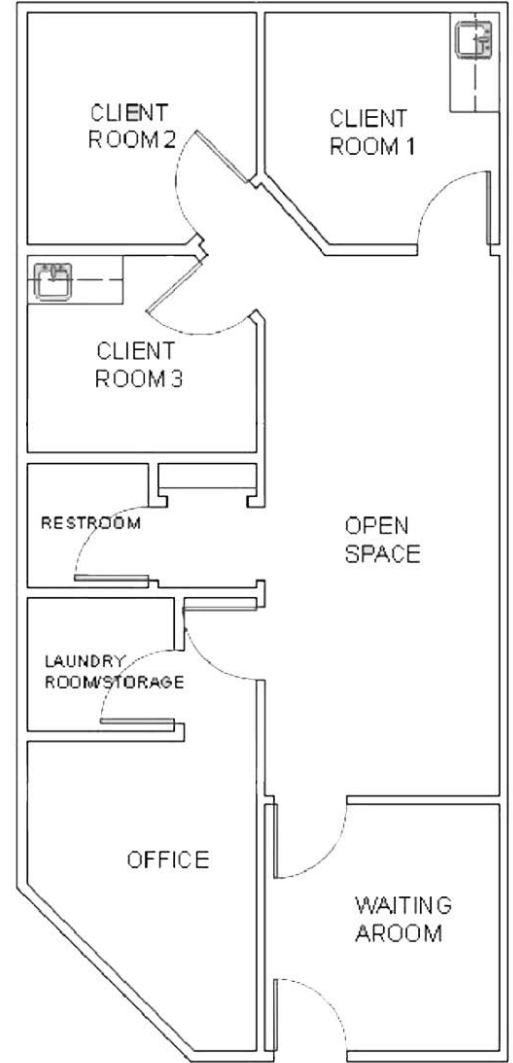
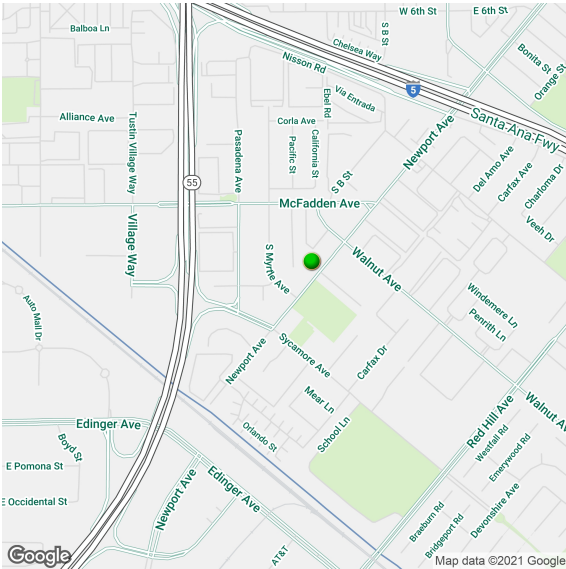
Vice President  
+1 949 725 8414  
steven.lewallen@cbre.com  
Lic. 01068304

**Ryan G. Dopp**

Senior Associate  
+1 949 725 8409  
ryan.dopp@cbre.com  
Lic. 01902830

# Lease Highlights

- + Two-Story Medical Office Building
- + Directly Across from Foothill Regional Medical Center
- + Easy Access to 5 and 55 Freeways
- + Well Maintained Property
- + Elevator Served
- + Convenient Wrap-Around Parking
- + Centrally Located to Major Hospitals
- + Attractive Landscaping
- + Owned and Managed by Welltower
- + Tenant Responsible for Its' Own Janitorial Service



**Suite 204**

Suite #	Space Use	Lease Rate	Lease Type	Size	Availability
<b>Suite 204</b>	<b>Medical</b>	<b>\$2.40 SF/Month</b>	<b>MG</b>	<b>941 RSF</b>	<b>Vacant</b>

© 2023 CBRE, Inc. All rights reserved. This information has been obtained from sources believed reliable, but has not been verified for accuracy or completeness. You should conduct a careful, independent investigation of the property and verify all information. Any reliance on this information is solely at your own risk. CBRE and the CBRE logo are service marks of CBRE, Inc. All other marks displayed on this document are the property of their respective owners, and the use of such logos does not imply any affiliation with or endorsement of CBRE. Photos herein are the property of their respective owners. Use of these images without the express written consent of the owner is prohibited.