

# 2 Ridgedale Avenue

CEDAR KNOLLS, NJ

## PROFESSIONAL OFFICE SUITES FOR LEASE



### Available Spaces

**Suite 208: Approx. +/- 1000 SF**

- Two (2) windowed offices
- Large open bullpen
- Move-in ready

**Suite 350: Approx. +/- 2500 SF**

- Three (3) private offices
- Open bullpen

### Property/Building Features

- Building Size: Approx. 70,400 SF
- 3 Story office building
- On-site bank branch
- Abundant parking
- Proximity to Wegmans & Marriott Hotel
- Near All Major Highways; Located just off Rt 10/287 Interchange



**Rental Rate \$17.00 psf plus Tenant Electric**

### Contact Exclusive Agent

**Helene Elbaum**

[helbaum@newmarkrealestate.com](mailto:helbaum@newmarkrealestate.com)

**Mobile:** 201.320.3430

**Office:** 973.884.4444 ext. 26

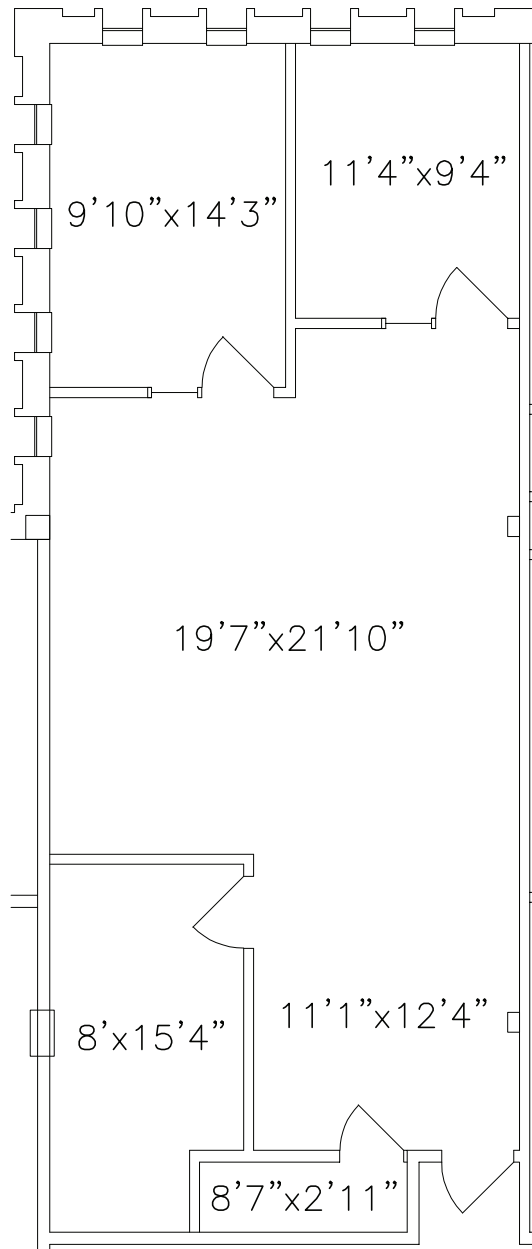


2024 Newmark Associates, CRE, LLC. Information obtained from sources deemed to be reliable. However, no guarantee, warrant or representation is made as to accuracy of the information presented which is submitted subject to errors, omission, change of price, rental or other conditions, prior sale lease, financing or withdrawal without notice. Projections, opinions, assumptions or estimates are provided for example only, and may not represent current or future performance. Interested parties should consult their tax and legal advisors and conduct a thorough investigation of the property and any prospective transaction.

# 2 Ridgedale Avenue

CEDAR KNOLLS, NJ

## Floor Plan Suite 208



Approx. 1000 SF



YEARS STRONG

2024 Newmark Associates, CRE, LLC. Information obtained from sources deemed to be reliable. However, no guarantee, warrant or representation is made as to accuracy of the information presented which is submitted subject to errors, omission, change of price, rental or other conditions, prior sale lease, financing or withdrawal without notice. Projections, opinions, assumptions or estimates are provided for example only, and may not represent current or future performance. Interested parties should consult their tax and legal advisors and conduct a thorough investigation of the property and any prospective transaction.