



DEVELOPMENT COMPANY

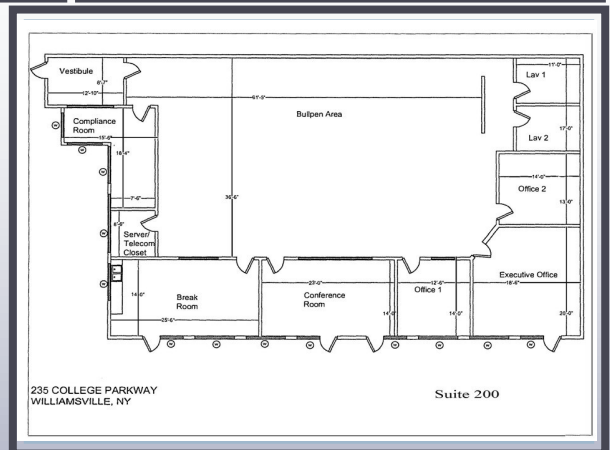
LEASING



**235 COLLEGE PARKWAY,
SUITE 200, AMHERST, NEW YORK**

OFFICE

5,196 SQUARE FEET



College Park is a 50 acre Class "A" premier office development, excellent proximity to major travel routes and transportation centers, and abundant parking.

716-632-7230
www.ZAEPFEL.COM

ZAEPFEL DEVELOPMENT COMPANY, 5505 Main Street, Suite A, Williamsville, NY 14221

The information contained herein is deemed reliable but not guaranteed