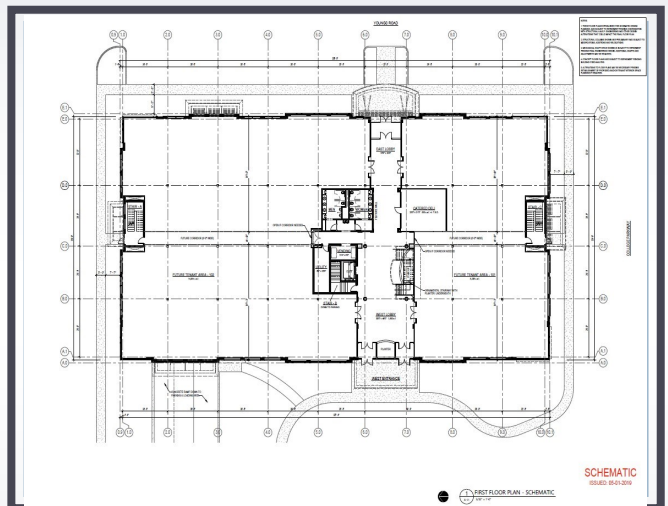




**DEVELOPMENT COMPANY**

**SEEKING ANCHOR TENANT**

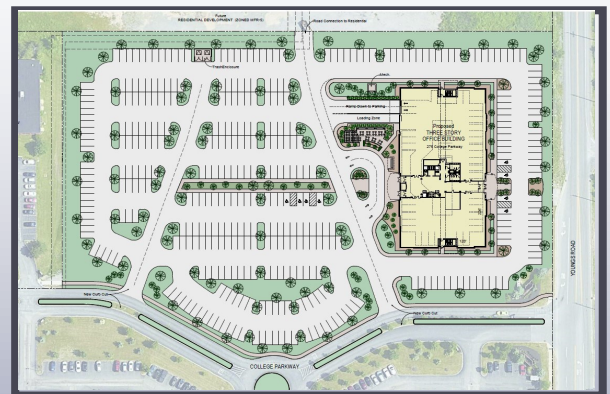


**275 COLLEGE PARKWAY,  
AMHERST, NEW YORK**

**PROPOSED OFFICE**

**110,000 GROSS SQUARE FEET**

College Park is a 50 acre Class "A" premier office development, excellent proximity to major travel routes and transportation centers, and abundant parking.



**716-632-7230**

**www.ZAEPFEL.COM**

**ZAEPFEL DEVELOPMENT COMPANY, 5505 Main Street, Suite A, Williamsville, NY 14221**

The information contained herein is deemed reliable but not guaranteed