

# MARLIN

## PROFESSIONAL CENTER



7436 & 7444 S Federal Hwy, Port St Lucie, FL 34952

**IMMEDIATE OCCUPANCY**



Built'out office

- Monument Signage Available
- First Floor • Great Parking
- Zoning: CG-PSL (General Commercial)
- Immediate Occupancy
- Located on S US One, just north of Prima Vista.

**Unit #7436** 1,350 ±SQFT

**\$1,650**/Month + Sales Tax

**Unit #7444** 1,200 ±SQFT

**\$1,350**/Month + Sales Tax



**JOE PELAYO**/CCIM, SIOR  
Founder & CEO  
trec@joepelayo.com  
954.224.8773

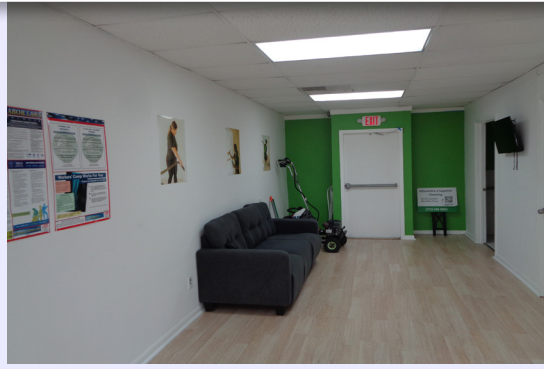
**CONTACT US!**

**TREC** Total Real Estate Consultants Inc.

*Note: This offering subject to errors, omissions, prior sales or withdrawal without notice.*

**CAROLYN NIEMCZYK**/CFM  
Broker Associate St. Lucie County President  
carolynniemczyk@gmail.com  
772.359.3242



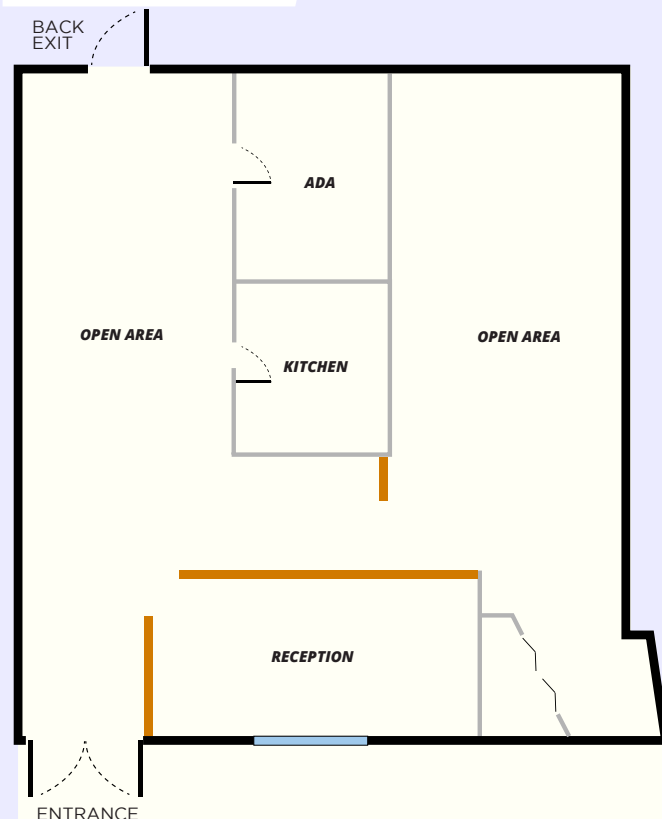
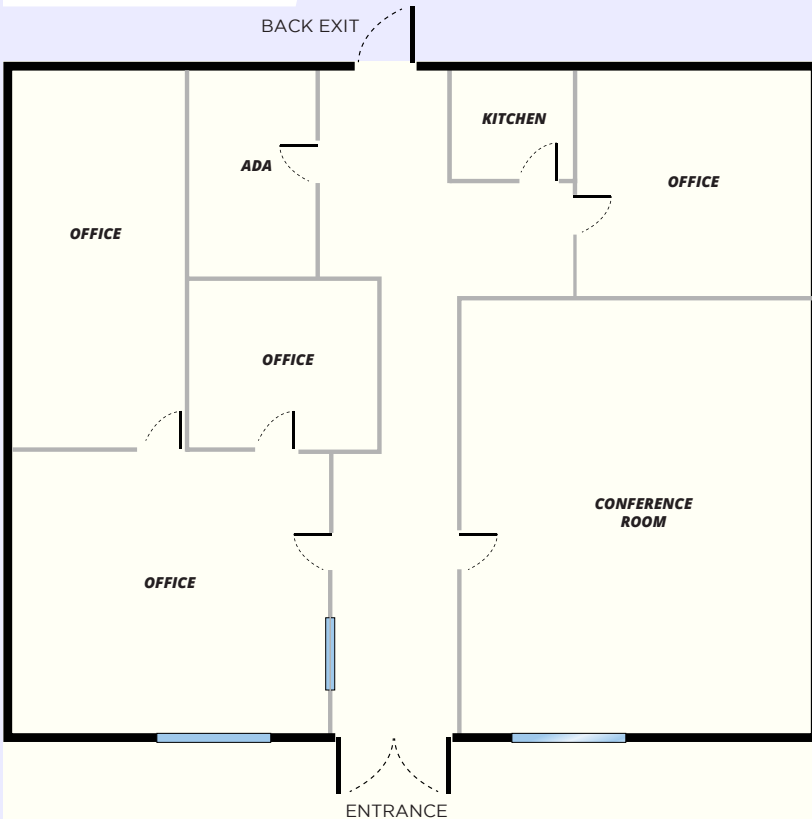


**Unit #7436**

1,350 ±SQFT

**Unit #7444**

1,200 ±SQFT



**JOE PELAYO**/CCIM, SIOR  
Founder & CEO  
trec@joepelayo.com  
954.224.8773

**CONTACT US!**

**TREC** Total Real Estate Consultants Inc.

Note: This offering subject to errors, omissions, prior sales or withdrawal without notice.

**CAROLYN NIEMCZYK**/CFM  
Broker Associate St. Lucie County President  
carolynniemczyk@gmail.com  
772.359.3242

