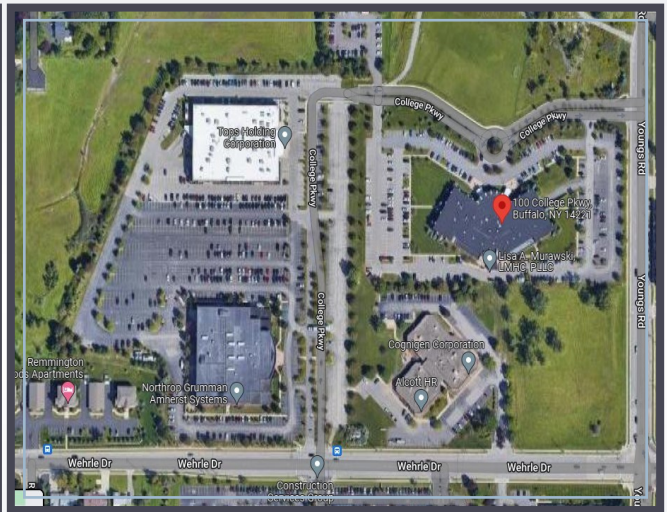




DEVELOPMENT COMPANY

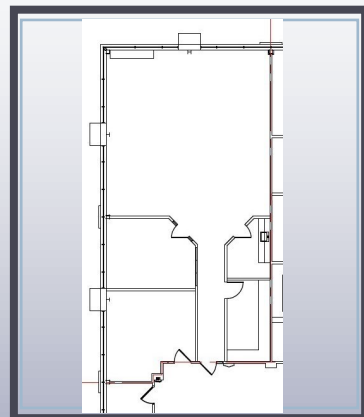
# LEASING



**100 COLLEGE PARKWAY,  
SUITE 200 & 210 , AMHERST,  
NEW YORK  
OFFICE**

**1,848 SQUARE FEET**

College Park is a 50 acre Class "A" premier office development, excellent proximity to major travel routes and transportation centers, and abundant parking.



**716-632-7230**

**www.ZAEPFEL.COM**

ZAEPFEL DEVELOPMENT COMPANY, 5505 Main Street, Suite A, Williamsville, NY 14221

The information contained herein is deemed reliable but not guaranteed