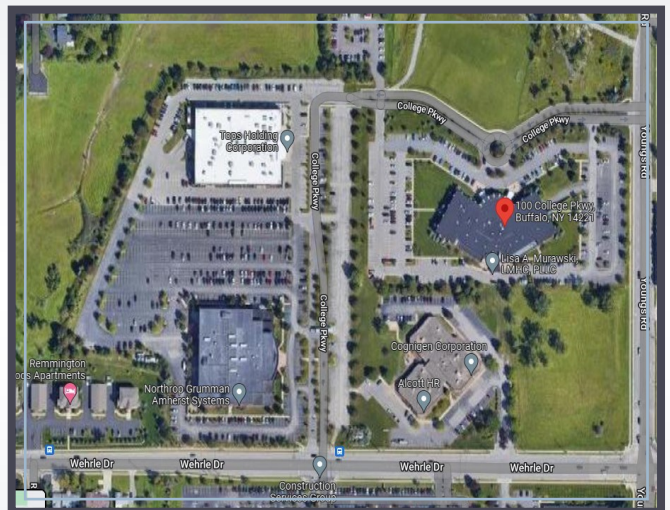




DEVELOPMENT COMPANY

# LEASING

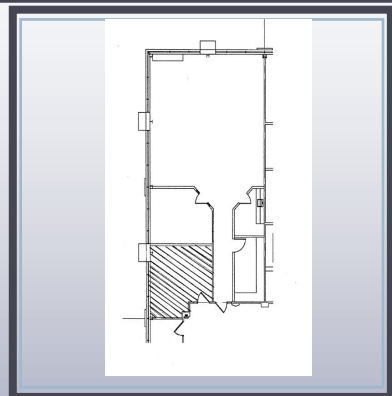


**100 COLLEGE PARKWAY,  
SUITE 210, AMHERST, NEW YORK**

**OFFICE**

**1,608 SQUARE FEET**

College Park is a 50 acre Class "A" premier office development, excellent proximity to major travel routes and transportation centers, and abundant parking.



**716-632-7230**

**www.ZAEPFEL.COM**

ZAEPFEL DEVELOPMENT COMPANY, 5505 Main Street, Suite A, Williamsville, NY 14221

The information contained herein is deemed reliable but not guaranteed