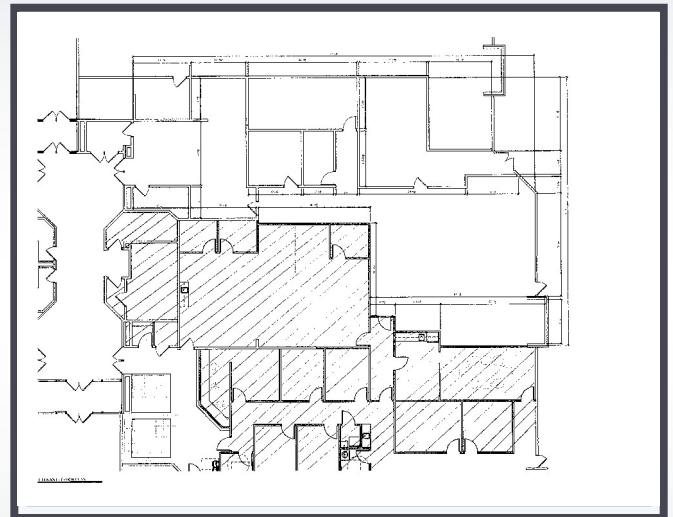




**DEVELOPMENT COMPANY**

# LEASING



**1780 WEHRLE DRIVE,  
SUITE 140, AMHERST, NEW YORK**

**OFFICE**

**4,115 SQUARE FEET**

College Park is a 50 acre Class "A" premier office development, excellent proximity to major travel routes and transportation centers, and abundant parking.



**716-632-7230**

**[www.ZAEPFEL.COM](http://www.ZAEPFEL.COM)**

**ZAEPFEL DEVELOPMENT COMPANY, 5505 Main Street, Suite A, Williamsville, NY 14221**

The information contained herein is deemed reliable but not guaranteed