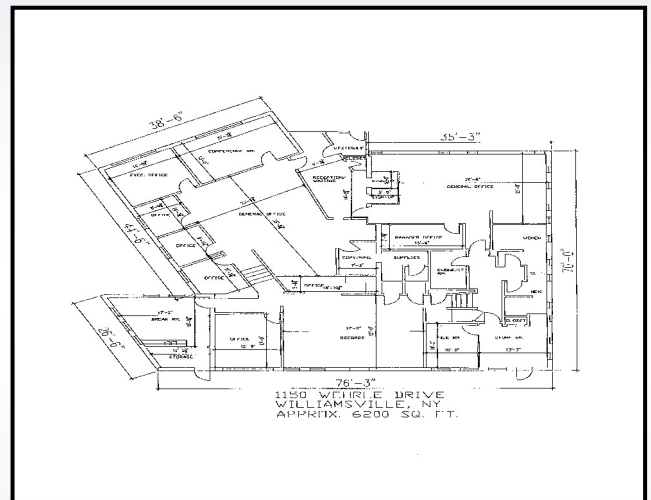




DEVELOPMENT COMPANY

# LEASING



1150 WEHRLE DRIVE, AMHERST,  
NEW YORK

OFFICE

6,200 SQUARE FEET

Excellent proximity to major travel routes  
and transportation centers.



716-632-7230

www.ZAEPFEL.COM

ZAEPFEL DEVELOPMENT COMPANY, 5505 Main Street, Suite A, Williamsville, NY 14221

The information contained herein is deemed reliable but not guaranteed