

**6,000 ±SQFT**



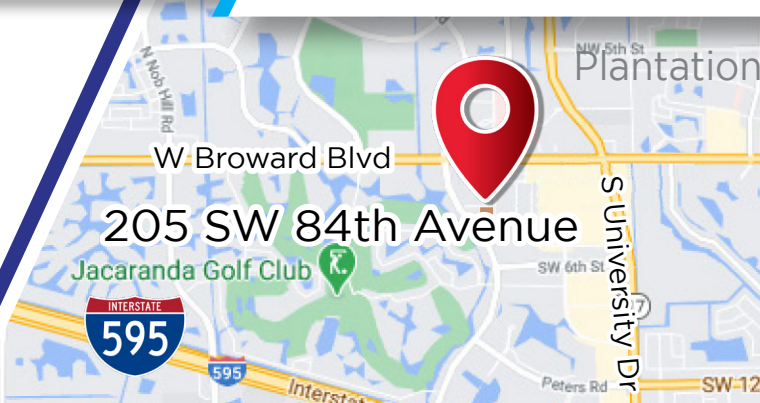
**MIDTOWN PLAZA**



**205 SW 84th Ave, Plantation, FL 33324**

**OCCUPANCY October 2022**

- Class "A" Medical
- State of the art medical office space
- Large Waiting Room, Large Conference Room, 3 Offices, 3 Doctor Offices, 3 Exam Rooms, Break Room, 2 SPA, 1 SPA Office, 5 ADA Bathroom, Laser Room, Coordinator Room, Photo Room, ACC/IT Room, 2 Proced Room. Pre Op Room, Surgery Room, Recovery Room, 1 Suite, Laundry w/ Dirty & Clean Storage Room.
- Ample parking
- Down the street from Westside Regional Medical Center



**\$16,500/Month + Sales Tax**

**CONTACT US!**



**JOE PELAYO** / CCIM, SIOR  
trec@joepelayo.com  
954.224.8773

**TREC**  
www.trecfl.com  
954.341.3294

Note: This offering subject to errors, omissions, prior sales or withdrawal without notice.

**AMY IANNELLO** / PA-C  
amyipac@yahoo.com  
954.483.4869



**GEORGE PELAYO** / RENE, MRP  
georgetrec@joepelayo.com  
954.557.3300

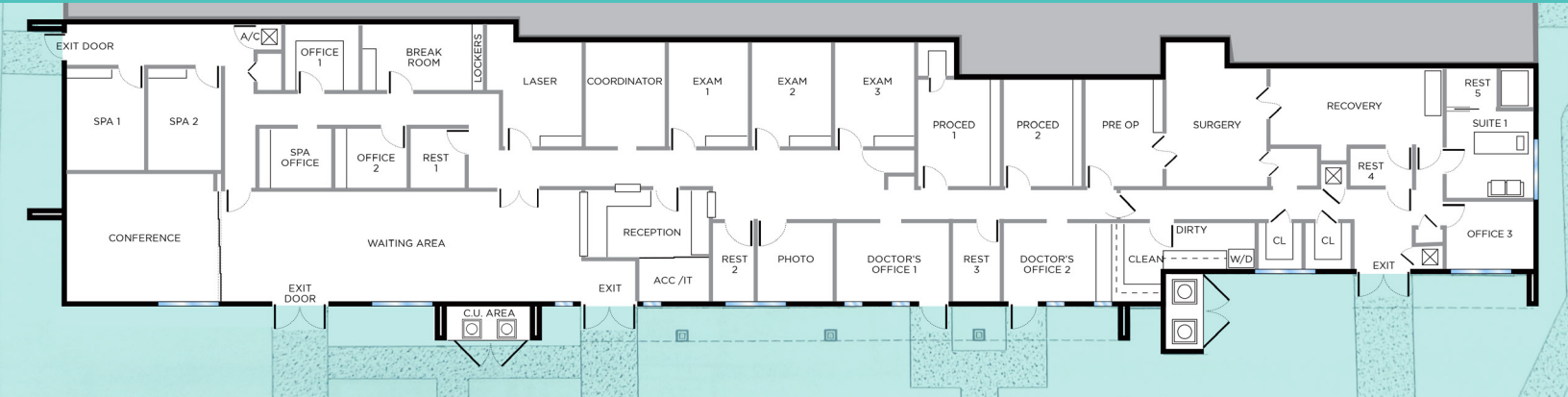


**205 SW 84th Ave, Plantation, FL 33324**

**FLOOR PLAN**



**FLOOR PLAN**



**JOE PELAYO/CCIM, SIOR**  
trec@joepelayo.com  
954.224.8773

**CONTACT US!**

**TREC**  
www.trecfl.com  
954.341.3294

*Note: This offering subject to errors, omissions, prior sales or withdrawal without notice.*

**AMY IANNELLO/PA-C**  
amyipac@yahoo.com  
954.483.4869



**GEORGE PELAYO/RENE, MRP**  
georgetrec@joepelayo.com  
954.557.3300

