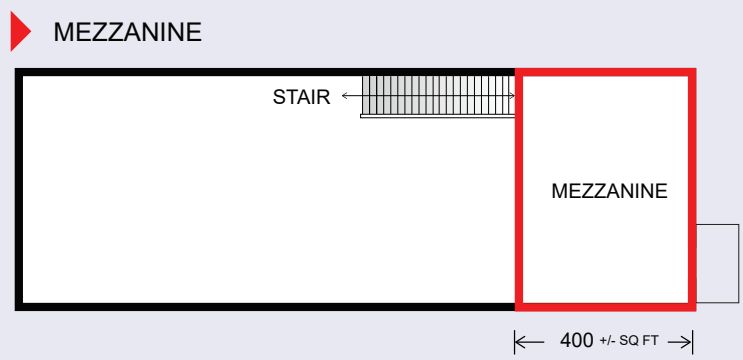
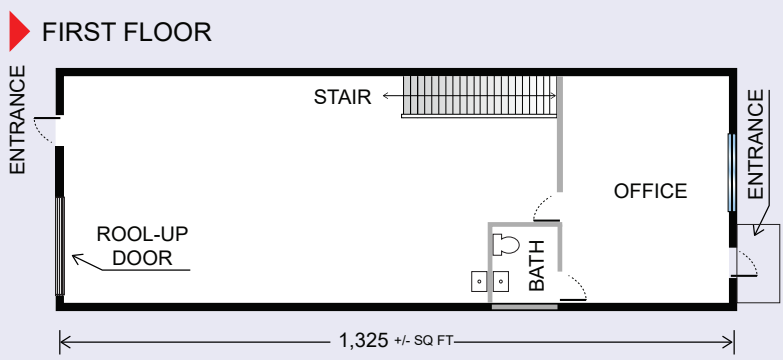


**CORAL SPRINGS CORPORATE PARK**  
**12349 NW 35th St, Coral Springs, FL 33065**

**FLOOR PLAN**



- 1,325+/- SQ FT Warehouse First Floor (21.1'x62.8')
- +/- 340 SQFT Office / 400+/- SQ FT Mezzanine
- Garage Roll Up Door
- 21' Clear Ceiling Height
- Zone IRD—Industrial Research & Development
- Corner building 124th Ave/ 35 Street

**1,725 ±SQFT**  
**\$3,200/Month**  
+Sales Tax  
+Water fee \$50 +Garbage fee \$50

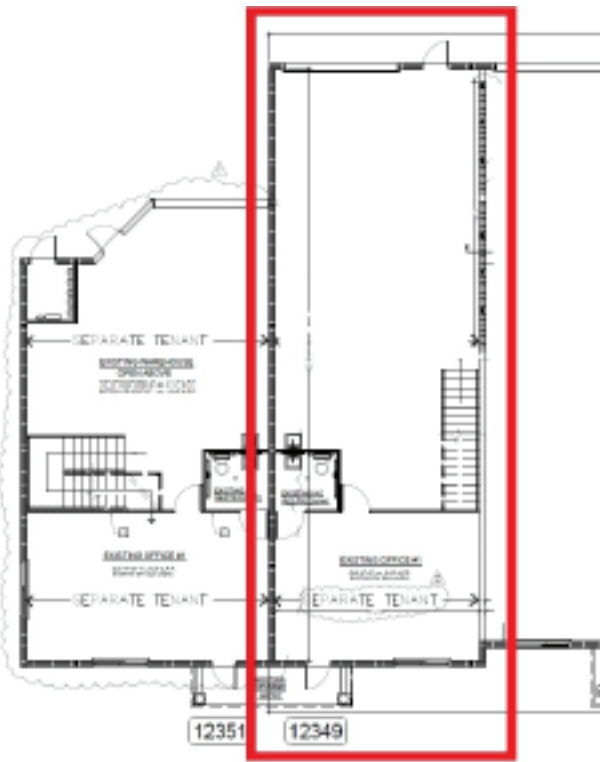


**JOE PELAYO** / CCIM, SIOR  
trec@joepelayo.com  
954.551.9427

**CALL US!**  
**TREC**  
Total Real Estate Consultants Inc.  
www.trecfl.com



**GEORGE PELAYO** / RENE, MRP  
georgetrec@joepelayo.com  
954.482.1330



**JOE PELAYO** / CCIM, SIOR  
trec@joepelayo.com  
954.551.9427

**CALL US!**  
**TREC**  
Total Real Estate  
Consultants Inc.  
www.trecfl.com

**GEORGE PELAYO** / RENE, MRP  
georgetrec@joepelayo.com  
954.482.1330

