

# RETAIL / OFFICE

FOR **LEASE**

1,230 ±SQFT



10920 WILES ROAD, CORAL SPRINGS FL 33065

**TREC** Total Real Estate Consultants Inc. www.trecfl.com



## RETAIL / OFFICE

- Zoned B-3: General Business
- Year built 1976
- CBS Construction
- Liberal B3 zoning allows many uses including automotive repair

**\$2,000**/Month + Sales Tax



CALL US!

**TREC**  
Total Real Estate Consultants Inc.  
www.trecfl.com  
954.341.3294

**JOE PELAYO** / CCIM, SIOR  
trec@joepelayo.com  
954.224.8773

**GEORGE PELAYO** / RENE, MRP  
georgetrec@joepelayo.com  
954.482.1330



#1 COMMERCIAL AGENT IN # TRANSACTIONS **SIOR** SOCIETY OF INDUSTRIAL, OFFICE, RETAILERS

COMMERCIAL REAL ESTATE

Note: This offering subject to errors, omissions, prior sales or withdrawal without notice.



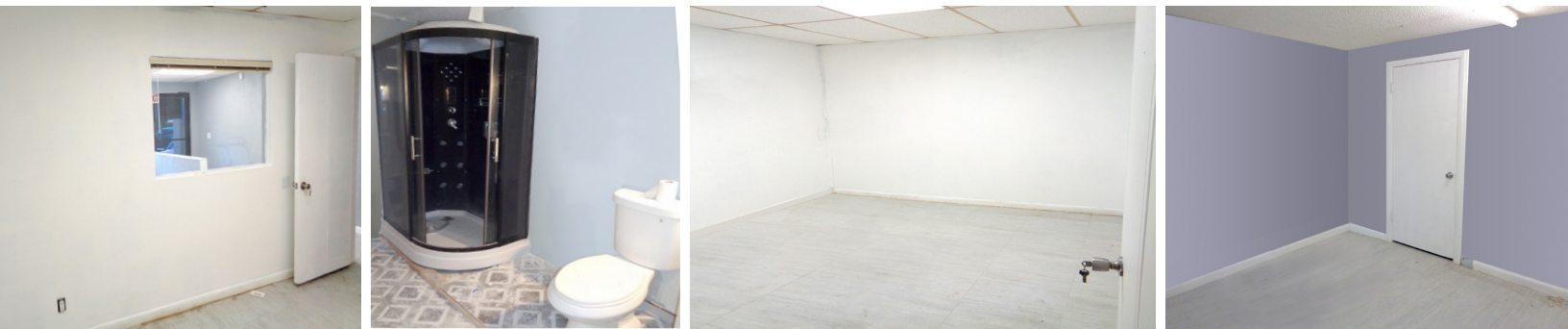
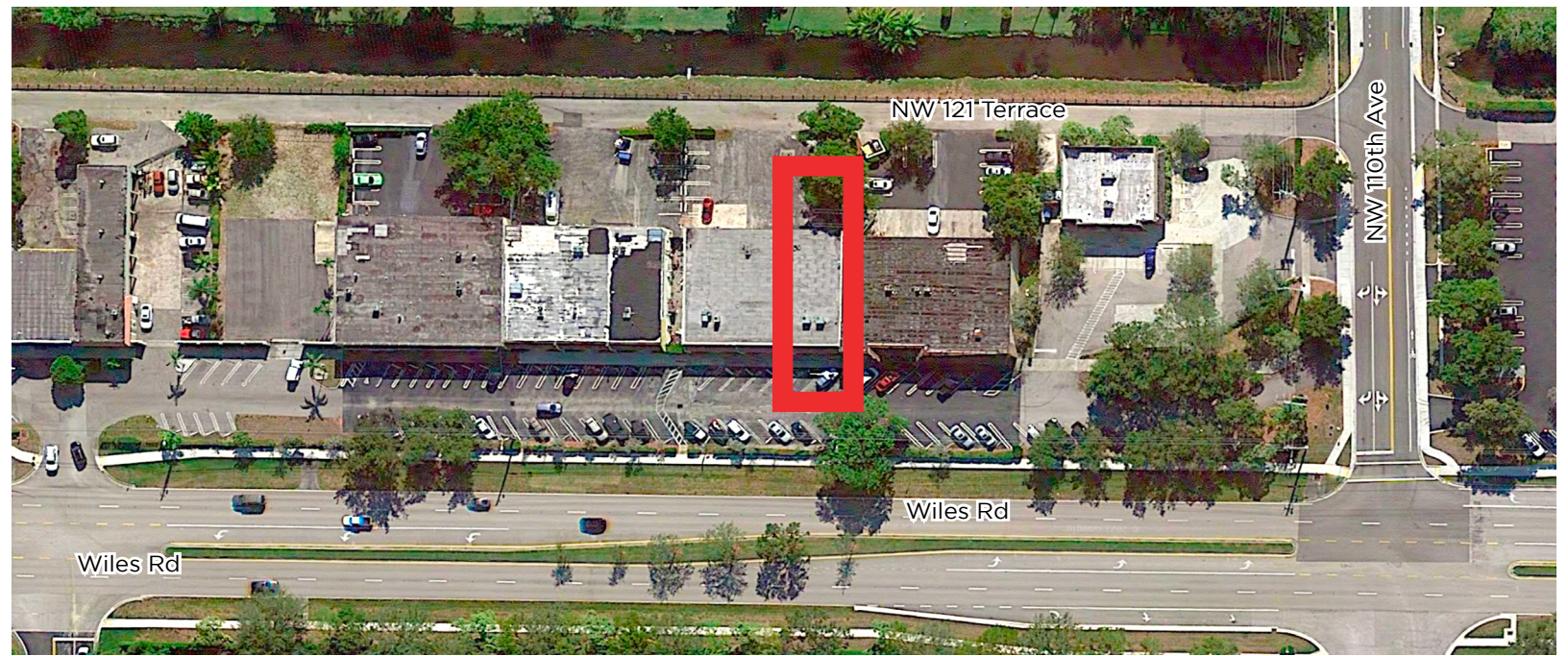
RETAIL / OFFICE | 1,230 ±SQFT

FOR **LEASE**



**10920 WILES ROAD, CORAL SPRINGS FL 33065**

**TREC** Total Real Estate Consultants Inc. www.trecfl.com



**JOE PELAYO** / CCIM, SIOR  
trec@joepelayo.com  
**954.224.8773**

**CALL US!**  
**TREC**  
Total Real Estate  
Consultants Inc.  
www.trecfl.com  
954.341.3294

**GEORGE PELAYO** / RENE, MRP  
georgetrec@joepelayo.com  
**954.482.1330**



**#1** COMMERCIAL AGENT IN # TRANSACTIONS **SIOR** SOCIETY OF INDUSTRIAL, OFFICE, RETAILERS

Note: This offering subject to errors, omissions, prior sales or withdrawal without notice.