



**385 MOFFETT PARK DR, SUITE 105 & 205-210
SUNNYVALE, CA**

Area

Contiguous ±49,372 SF Divisible to ±6,076 SF

Property Type for Lease

Office

Possession

Available Immediately

Term

2-5 years

Property Highlights

- 15,000K Plug & Play on Second Floor
- Large Open Kitchen
- Excellent Access to Highways 101 & 237
- Proximity to VTA Train Stop; 4/1000 Parking
- Good Mix of Private Offices, Conference Rooms and Open Office
- Extensive Glass Line
- Four Electric Charging Stations
- Motivated Landlord
- Monument and Building Signage
- Power to Building: 2,000 Amps @ 277 / 480 V

For information, please contact:

John Yandle

Executive Managing Director

t 408-987-4154

jyandle@ngkf.com

Gabe Regalado

Director

t 408-455-4913

gabe.regalado@ngkf.com

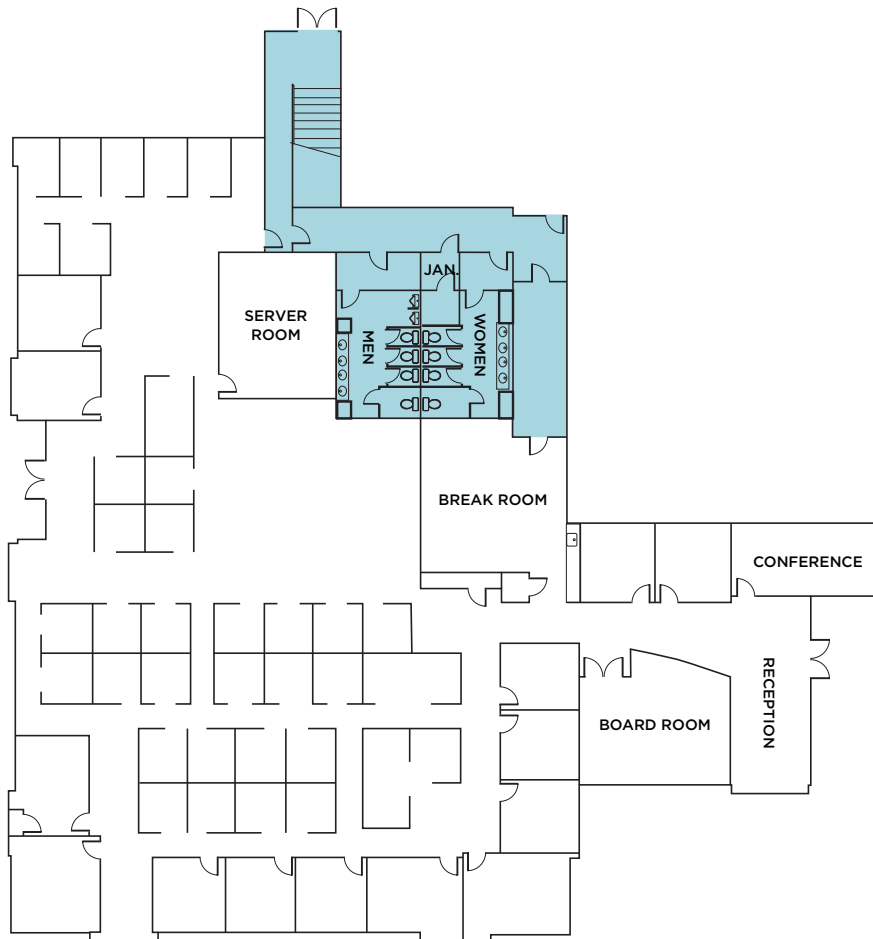
nrmk.com



Floor Plan

Suite 105 - ±6,076 SF

[Take A Virtual Tour](#)



 COMMON AREA

*NOT DRAWN TO SCALE

For information, please contact:

John Yandle

Executive Managing Director

t 408-987-4154

jyandle@ngkf.com

Gabe Regalado

Director

t 408-455-4913

gabe.regalado@ngkf.com

nmrk.com

NEWMARK

The distributor of this communication is performing acts for which a real estate license is required. The information contained herein has been obtained from sources deemed reliable but has not been verified and no guarantee, warranty or representation, either express or implied, is made with respect to such information. Terms of sale or lease and availability are subject to change or withdrawal without notice. 20-1271 • 02/21

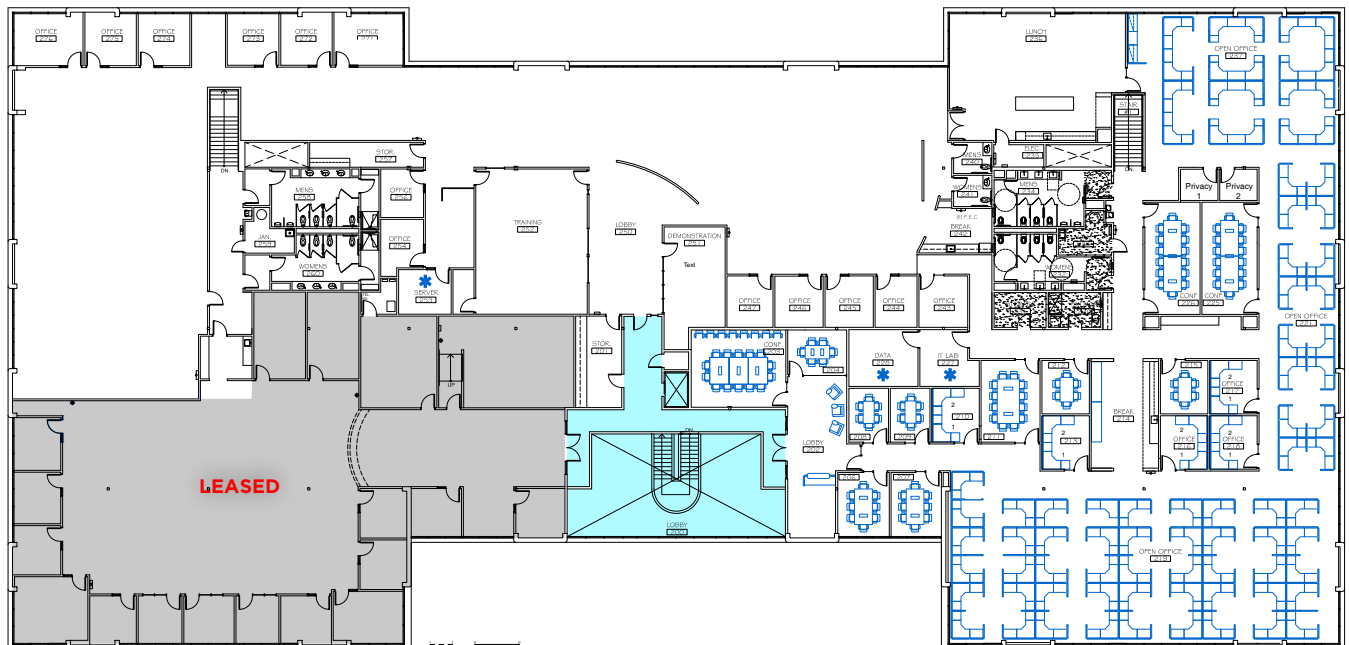


Floor Plan

Suite 205-210 - ±49,372 SF

[Take A Virtual Tour](#)

- 15,000K Plug & Play
- Cubed for 90
- 11 Meeting Rooms



* = SERVER

■ = COMMON AREA

*NOT DRAWN TO SCALE

For information, please contact:

John Yandle

Executive Managing Director

t 408-987-4154

jyandle@ngkf.com

Gabe Regalado

Director

t 408-455-4913

gabe.regalado@ngkf.com

nmrk.com

NEWMARK

The distributor of this communication is performing acts for which a real estate license is required. The information contained herein has been obtained from sources deemed reliable but has not been verified and no guarantee, warranty or representation, either express or implied, is made with respect to such information. Terms of sale or lease and availability are subject to change or withdrawal without notice. 20-1271 • 02/21



Gallery



For information, please contact:

John Yandle
Executive Managing Director
t 408-987-4154
jyandle@ngkf.com

Gabe Regalado
Director
t 408-455-4913
gabe.regalado@ngkf.com

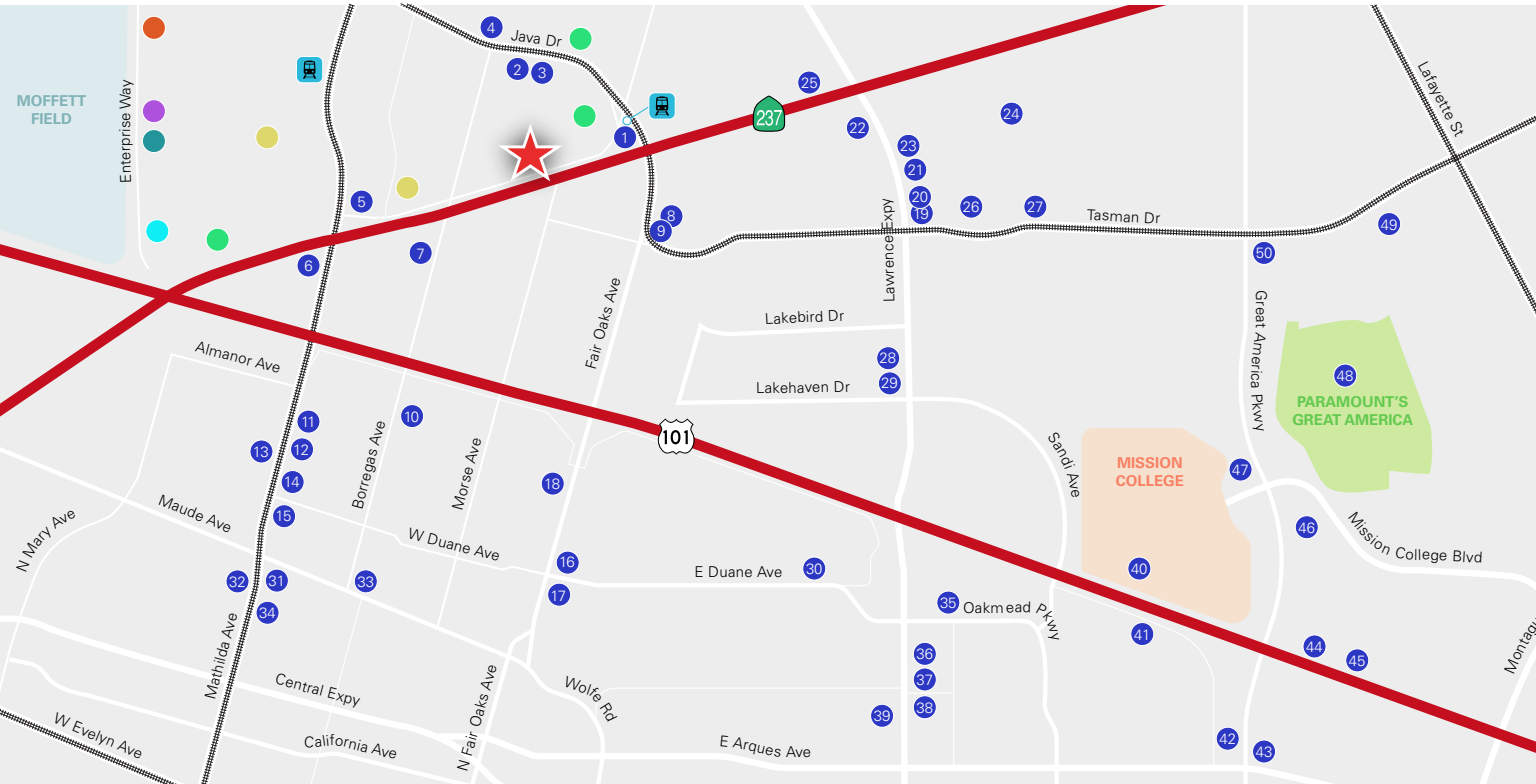
nmrk.com

NEWMARK

The distributor of this communication is performing acts for which a real estate license is required. The information contained herein has been obtained from sources deemed reliable but has not been verified and no guarantee, warranty or representation, either express or implied, is made with respect to such information. Terms of sale or lease and availability are subject to change or withdrawal without notice. 20-1271 • 02/21



Amenities Map

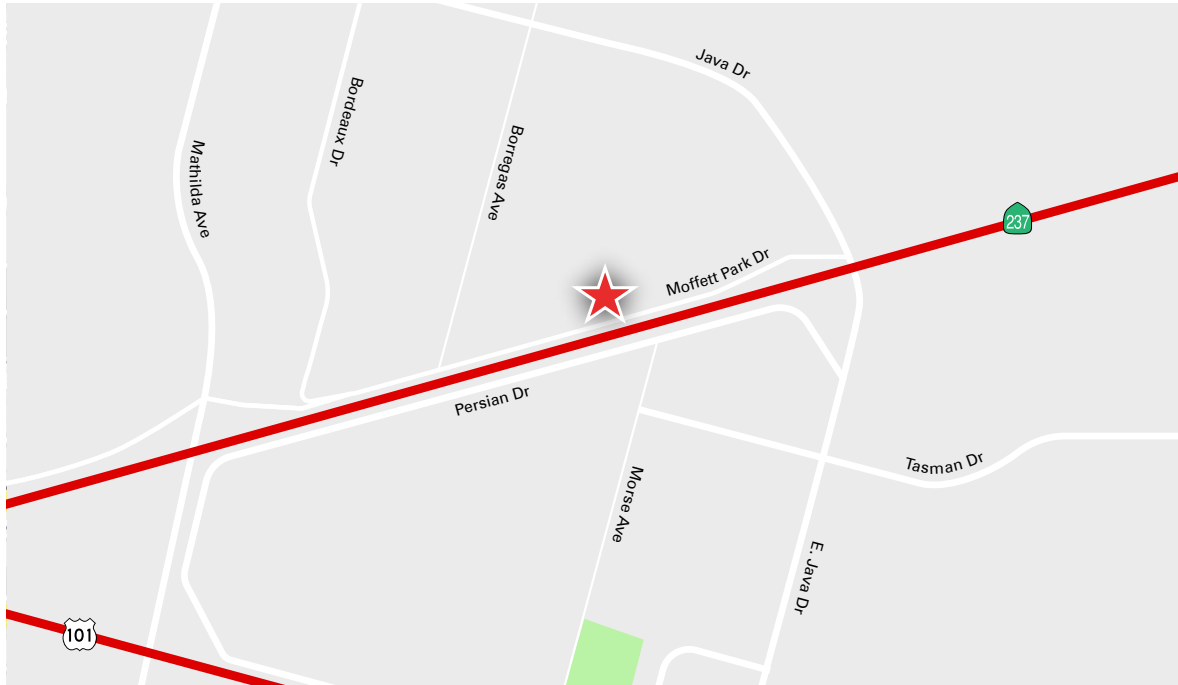


● Restaurants

- | | | | |
|--|--|--|---|
| 1. Togo's Sandwiches
Una Mas Mexican Grill | 21. The Feast Indian Company | 36. Bagel Place
McDonald's
Merit Vegetarian
Togo's Sandwiches | Opa!
Starbucks
Whole Foods |
| 2. Robee's Falafal | 22. Minh's Vietnamese Restaurant
Le Bon | 37. Bobo Drinks Express
Chaats & Curry
Happy Lemon
Mission City Café
Myzen Ramen
St. John's Bar & Grill
Tasty Subs & Pizza | 44. Birk's Restaurant
45. Pedro's Cantina
46. Parcel 104
47. Amarin Thai Cuisine
Café Falafel
House of Bagels
Iguanas
Pizza My Heart
Sushi Express
TeeDee Thai Laos Restaurant |
| 3. Subway Sandwiches
Vara
Java Sushi | 23. Mumu Hot Pot 24. Bella's Deli | 38. Falafel Bite
Pad Thai Cuisine | 48. Paramount's Great America
49. Levis Stadium
50. La Fontana |
| 4. Garam Masala | 25. RGB Bar & Grill | 39. Panera Bread | |
| 5. Faz Sunnyvale
Le Boulanger | 26. Rabbit's Foot Meatery | 40. In-N-Out
Jazen Tea
Krispy Kreme Donuts
Panda Express
Smoke Eaters
Tomatina
WorldWraps | ● Amazon Lab 126
● Google
● Hewlett Packard
● Juniper Networks
● Lockheed Martin
● Microsoft |
| 6. Asteria Grill | 27. The Higher Taste | 41. Prime | |
| 7. Lados | 28. Saigon Seafood Harbor
Homi Japanese Ramen
Giovanni's Pizza
Hotpot First
Dumpling Station
Curry Bhavan | 42. Sizzler
Jack in the Box | |
| 8. Z Pizza
Peet's Coffee
Boardwalk Sunnyvale | 29. Tarasco Taqueria | 43. Barebottle Brewing Co.
Chipotle
Fleming's Prime Steakhouse
Genji Sushi
Il Fornaio | |
| 9. Grocery Outlet | 30. Obed Mediterranean Cuisine
Barn Thai Restaurant
Clarita's Filipino Cuisine
Metro City
Taj Café
Tia Juana Restaurant | | |
| 10. Ruby's Pan Dulce | 31. KFC
Pizza Hut
Shaw's Sandwiches | | |
| 11. Denny's | 32. Wendy's | | |
| 12. Hobee's Restaurant | 33. Seto Japanese Cuisine
Gombe Bento | | |
| 13. Burger King | 34. Kal's Bar-B-Q
Fresh U Order | | |
| 14. Dish N' Dash | 35. Faultline Brewery | | |
| 15. McDonald's | | | |
| 16. Domino's Pizza
Rene Rose Island Cuisine
Daily Donuts | | | |
| 17. Tres Taqueria | | | |
| 18. Bombay Chaat | | | |
| 19. Pho Queen Noodle House
Xiang Xiang Noodle | | | |
| 20. Taco Bell | | | |



Location Map



- 3.5 Miles to Downtown Sunnyvale
- 5.2 Miles to Downtown Mountain View
- 5.5 Miles to Googleplex
- 6 Miles to McCarthy Ranch, Milpitas
- 7.8 Miles to San Jose Mineta Airport
- 11 Miles to Downtown Palo Alto

For information, please contact:

John Yandle

Executive Managing Director

t 408-987-4154

jyandle@ngkf.com

Gabe Regalado

Director

t 408-455-4913

gabe.regalado@ngkf.com

nrmk.com

NEWMARK

The distributor of this communication is performing acts for which a real estate license is required. The information contained herein has been obtained from sources deemed reliable but has not been verified and no guarantee, warranty or representation, either express or implied, is made with respect to such information. Terms of sale or lease and availability are subject to change or withdrawal without notice. 20-1271 • 02/21