



FOR LEASE OFFICE WAREHOUSE

CORAL SPRINGS CORPORATE PARK
3740 NW 124th Ave, Units 101 & 102,
Coral Springs, FL 33065



- Zone IRD - Industrial Research & Development
- Corner Unit / 100% A/C / 2 Entrances
- 2 Roll Up Door / 21' Ceiling height
- Open Reception / Showroom area
- Break room / ADA bathroom

+/- 3,700 SQFT

\$4,500/Monthly
+CAM/OP.EX + Sales Tax

Tenant Responsible for utilities

IMMEDIATE OCCUPANCY



JOE PELAYO / CCIM, SIOR
trec@joepelayo.com
954.224.8773



TREC
Total Real Estate
Consultants Inc.
www.trecfl.com
954.341.3294

GEORGE PELAYO / RENE, MRP
georgetrec@joepelayo.com
954.482.1330



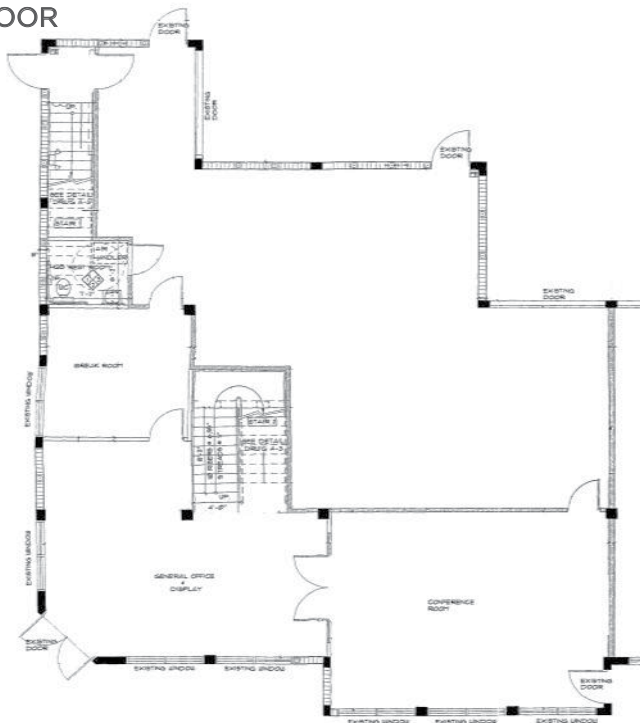
Note: This offering subject to errors, omissions, prior sales or withdrawal without notice.

**FOR LEASE
OFFICE WAREHOUSE**

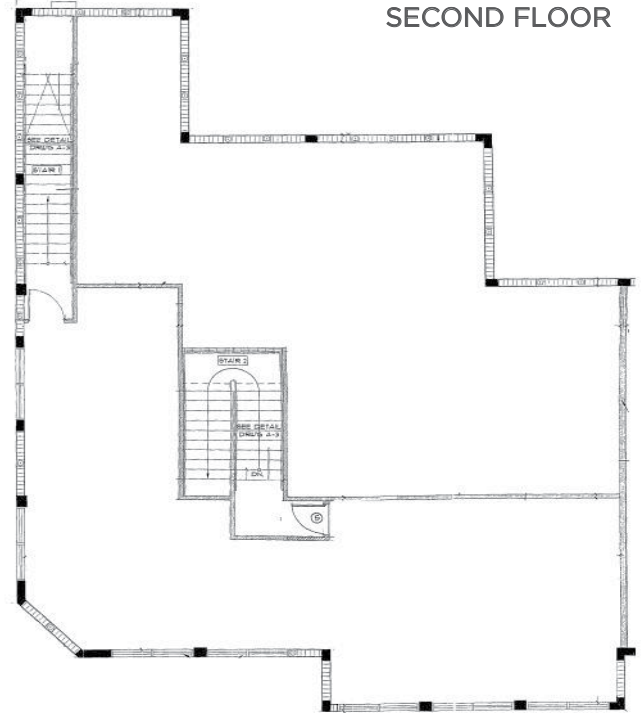
**CORAL SPRINGS
CORPORATE PARK**
3740 NW 124th Ave,
Units 101 & 102, Coral
Springs, FL 33065



FIRST FLOOR



SECOND FLOOR



JOE PELAYO / CCIM, SIOR
trec@joepelayo.com
954.224.8773



TREC
Total Real Estate
Consultants Inc.
www.trecfl.com
954.341.3294

GEORGE PELAYO / RENE, MRP
georgetrec@joepelayo.com
954.482.1330



Note: This offering subject to errors, omissions, prior sales or withdrawal without notice.