



Washington Square - Office/Retail

1618 Sullivan Ave, Daly City, CA 94015



Dan Tealdi

iCapRate, Inc.

555 California St, Suite 49th Floor, San Francisco, CA 94104

dtealdi@icaprate.com

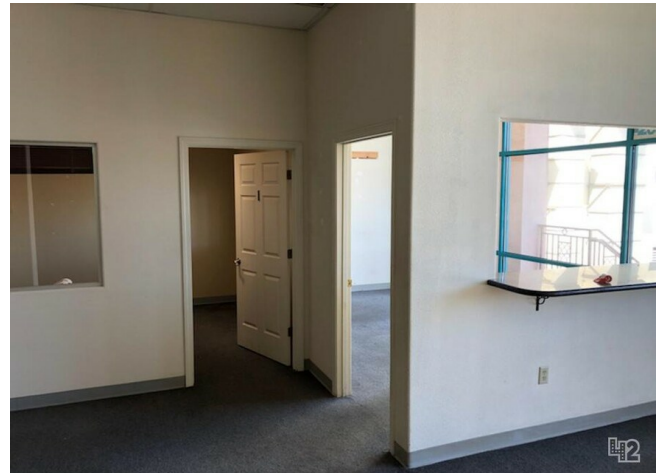
(800) 890-3318

Washington Square

\$27.00 /SF/Yr

Office/Retail space available in a prime Daly City location. Close proximity to 280 freeway access to downtown SF, the Peninsula and Colma Bart station....

- Heavy Daytime traffic
- Open floor plan with large reception area and built out private offices



Rental Rate: \$27.00 /SF/Yr

Property Type: Office

Building Class: C

Rentable Building Area: 9,000 SF

Year Built: 1998

Walk Score ®: 86 (Very Walkable)

Transit Score ®: 48 (Some Transit)

Rental Rate Mo: \$2.25 USD/SF/Mo

2nd Floor Ste 208

Space Available	2,000 SF
Rental Rate	\$27.00 /SF/Yr
Date Available	Now
Service Type	Modified Gross
Built Out As	Standard Office
Space Type	Relet
Space Use	Office/Retail
Lease Term	5 Years

Major Tenant Information

Tenant	SF Occupied	Lease Expired
Farmers Insurance	1,050	
Mailbox USA-Daly City	400	
Maria Angara Dental Corp	450	
San Francisco Dermatopathology	600	
Washington Dental Care	800	



1618 Sullivan Ave, Daly City, CA 94015

Office/Retail space available in a prime Daly City location. Close proximity to 280 freeway access to downtown SF, the Peninsula and Colma Bart station.

Property Photos

