

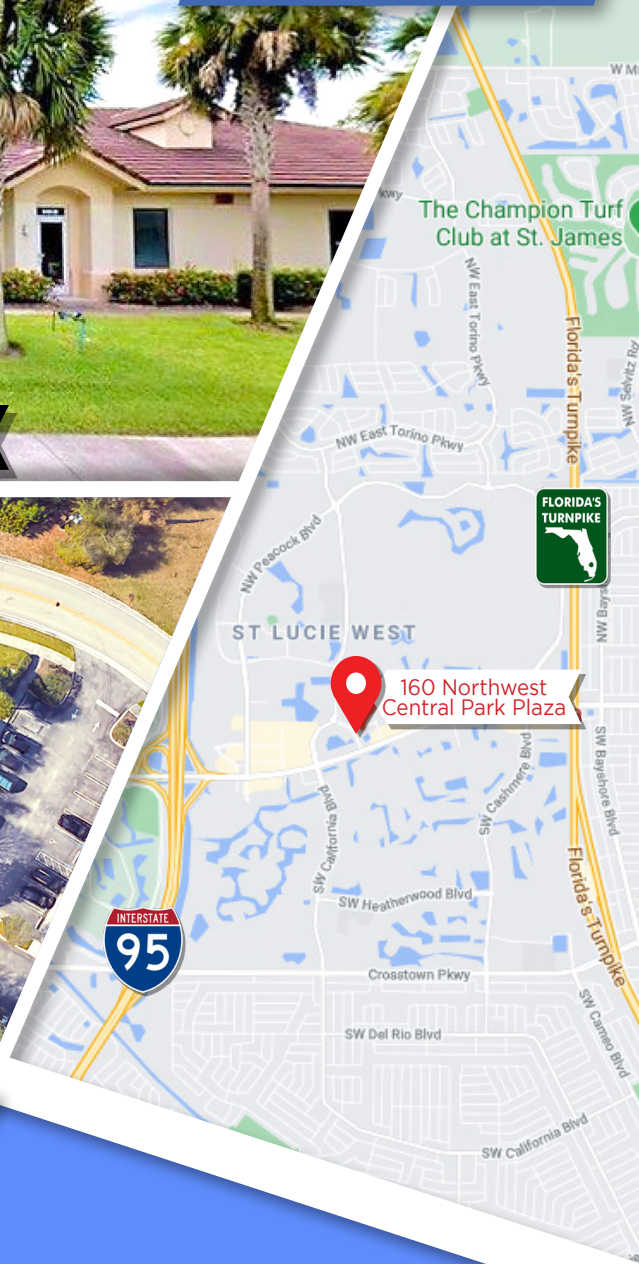
160 NW Central Park Plaza Port St. Lucie, FL 34986

FOR
LEASE



IMMEDIATE AVAILABILITY

CENTRAL PARK PLAZA



**Class "A"
office space.**

- Immediate occupancy
- Fully built out as professional services office.
- Located in the heart of St. Lucie West Business District.
- Office is minutes from I-95 & Turnpike.

Unit #103

1,650 SQFT

\$3,162/Month
+ Sales Tax

\$17/SF rent & \$6 CAM.
+SaleTax



JOE PELAYO/CCIM, SIOR
Founder & CEO
trec@joepelayo.com
954.224.8773

CONTACT US!

TREC Total Real Estate
Consultants Inc.

Note: This offering subject to errors, omissions,
prior sales or withdrawal without notice.

CAROLYN NIEMCZYK/CFM
Broker Associate St. Lucie County President
carolynniemczyk@gmail.com
772.359.3242



NW Central Park Plaza

**FOR
LEASE**

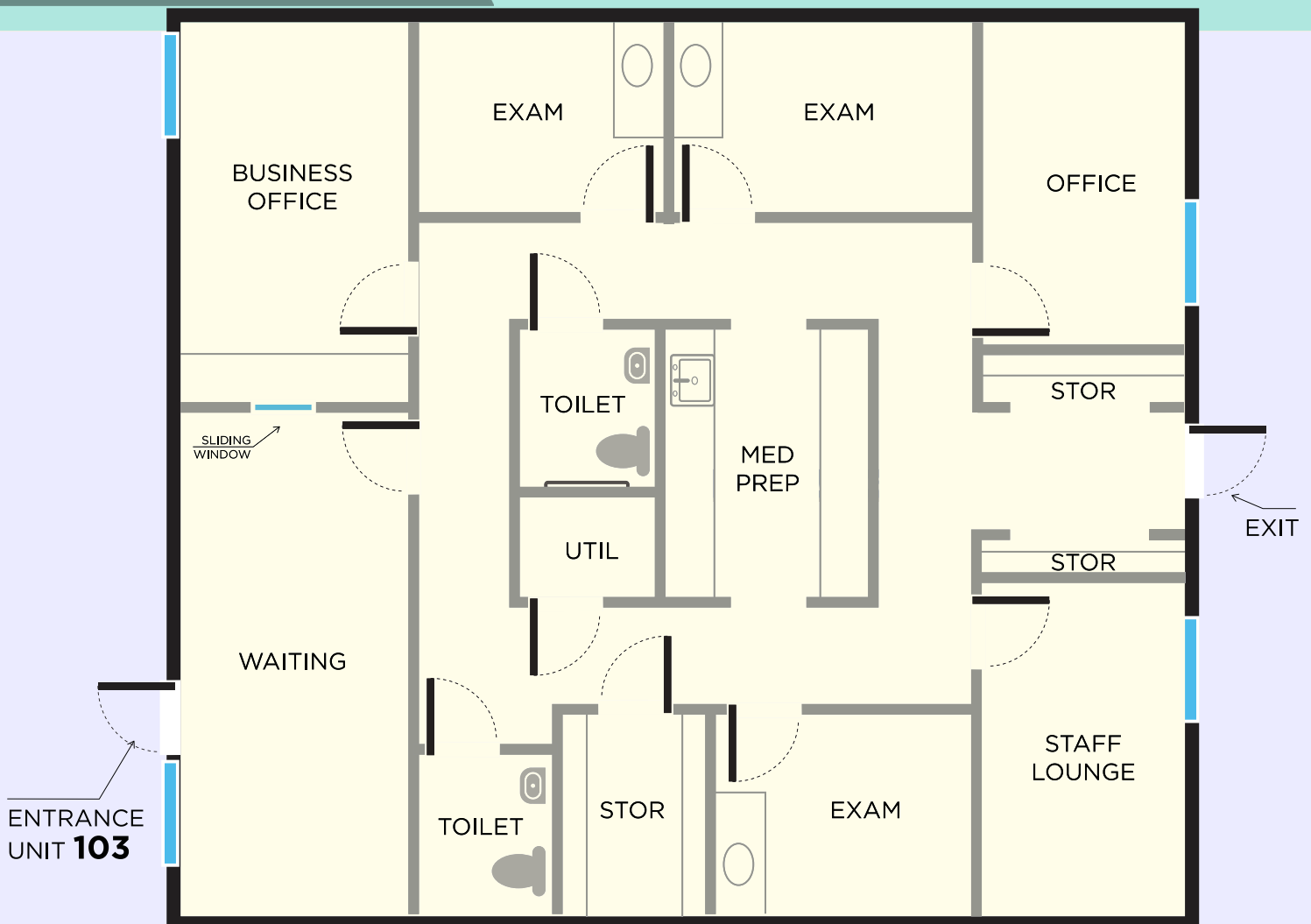
NW Country Club Dr



**SUITE #
103**



SUITE 103 FLOOR PLAN



JOE PELAYO/CCIM, SIOR
Founder & CEO
trec@joepelayo.com
954.224.8773

CONTACT US!

TREC Total Real Estate Consultants Inc.

Note: This offering subject to errors, omissions, prior sales or withdrawal without notice.

CAROLYN NIEMCZYK/CFM
Broker Associate St. Lucie County President
carolynniemczyk@gmail.com
772.359.3242

