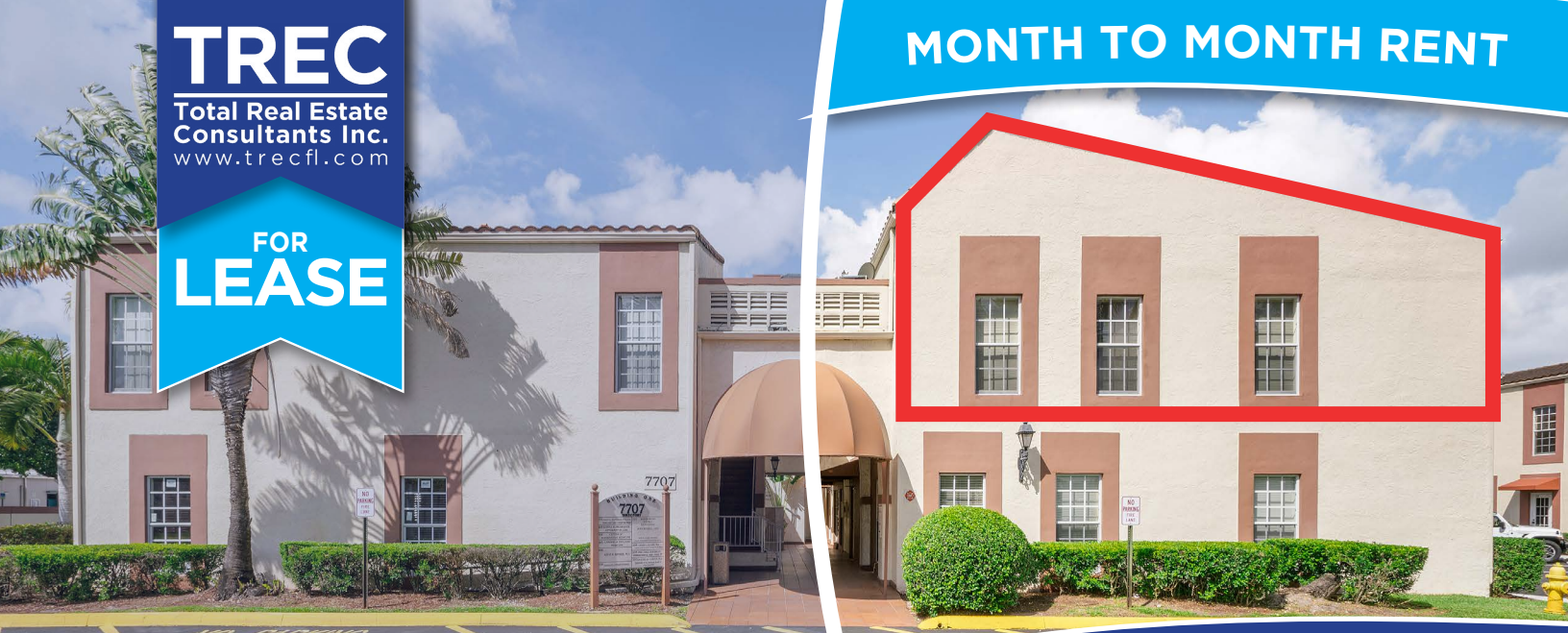


TREC

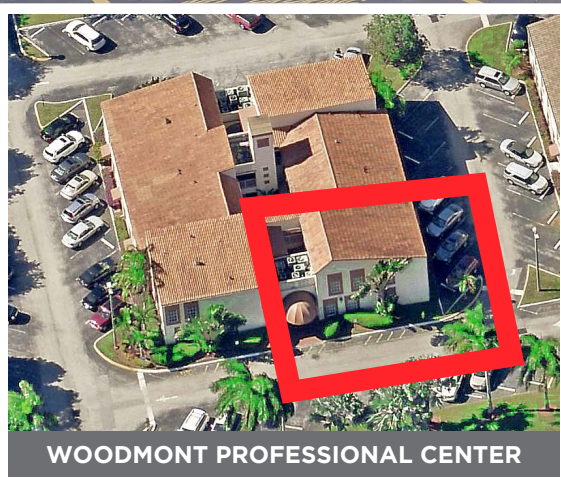
Total Real Estate Consultants Inc.
www.trecfl.com

FOR LEASE

MONTH TO MONTH RENT



7707 N University Dr, Suite 204 Tamarac, FL 33321



WOODMONT PROFESSIONAL CENTER



MEDICAL OFFICE CONDO

SECOND FLOOR

- ACCESS 24 HOURS / 7 DAYS
- Zone B-1 / Motivated Seller
- Frontage & View to University Dr
- 1 Executive Offices / 2 Examination rooms
- Reception Waiting Area / Nurse station (SHARED)
- Break room / 1 Bathroom
- Corner Unit / 2 Entrances
- 6 Reserve Parking Spaces / General Parking
- Impact Glass Windows

1,200 ±SQFT

\$1,200 /Month

+ Sales Tax



JOE PELAYO / CCIM, SIOR
trec@joepelayo.com
954.224.8773



CALL US!
TREC
Total Real Estate Consultants Inc.
www.trecfl.com
954.341.3294

GEORGE PELAYO
georgetrec@joepelayo.com
954.482.1330



Note: This offering subject to errors, omissions, prior sales or withdrawal without notice.

TREC

Total Real Estate Consultants Inc.
www.trecfl.com

MEDICAL OFFICE CONDO

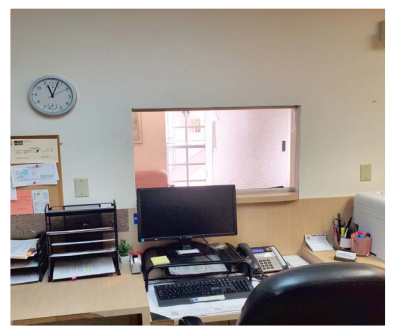
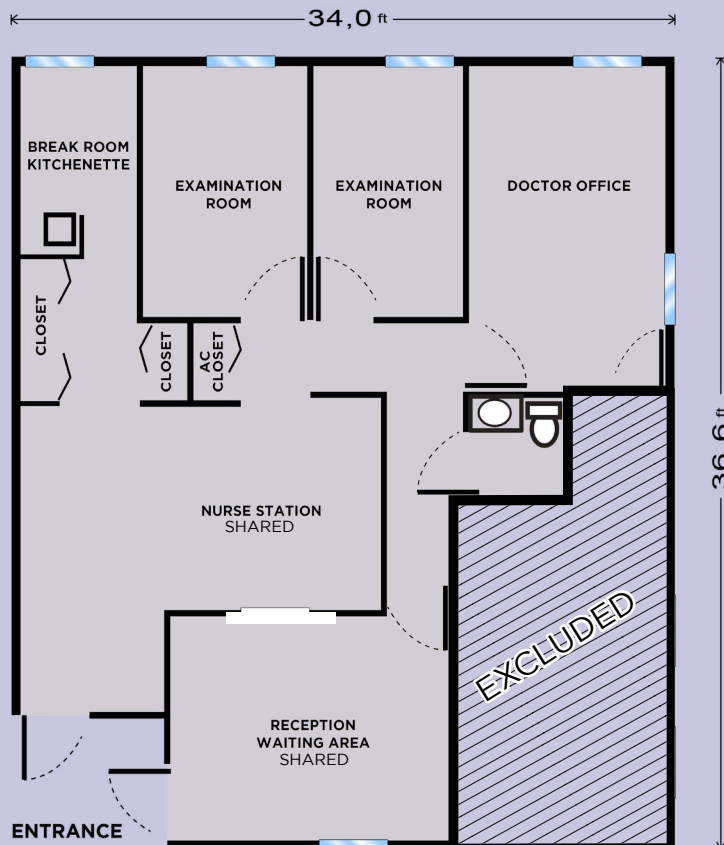
SECOND FLOOR

FOR LEASE



7707 N University Dr, Suite 204 Tamarac, FL 33321

FLOORPLANT Suite 204



JOE PELAYO / CCIM, SIOR
trec@joepelayo.com
954.224.8773



CALL US!
TREC
Total Real Estate Consultants Inc.
www.trecfl.com
954.341.3294

GEORGE PELAYO
georgetrec@joepelayo.com
954.482.1330



Note: This offering subject to errors, omissions, prior sales or withdrawal without notice.