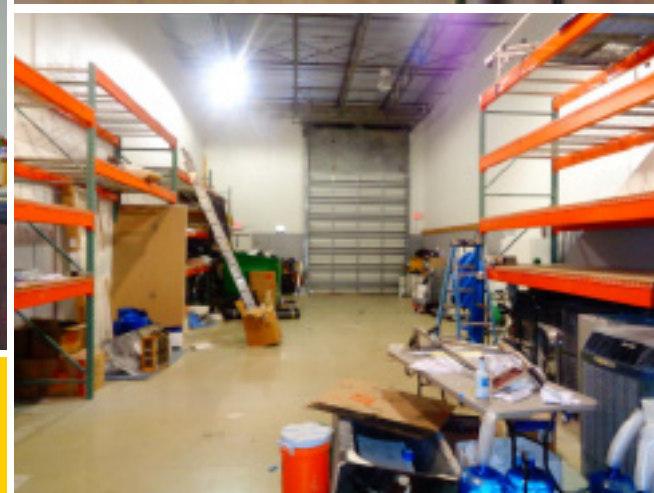
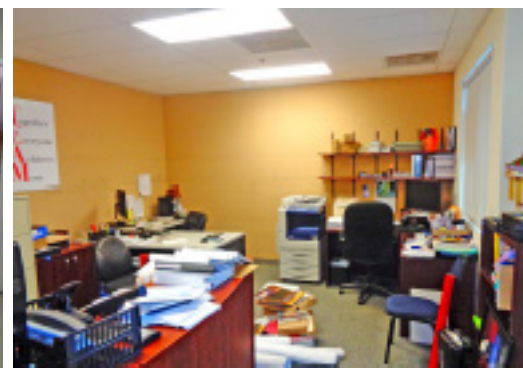
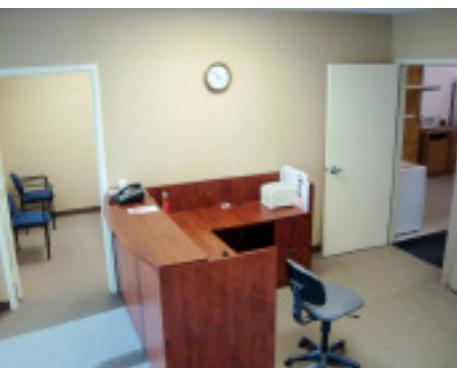




**FOR LEASE +/- 2,500 SQFT
OFFICE WAREHOUSE**



2745 NW 19th St,
Pompano Beach, FL 33069

- Industrial Zoning
- 2 Offices / Bathroom / Roll Up Garage Door
- Includes Racking System & Furniture
- +/- 250 SQFT Mezzanine / +/-2,250 SQFT Warehouse
- 21 Ceiling Height / Concrete Building
- Easy access to Florida's Turnpike, I-95
- Available within 30 days of signed lease

2,500 ±SQFT
\$3,500/Month
+SalesTax



JOE PELAYO / CCIM, SIOR
trec@joepelayo.com
954.224.8773



CALL US!
TREC
Total Real Estate
Consultants Inc.
www.trecfl.com
954.341.3294

GEORGE PELAYO
georgetrec@joepelayo.com
954.482.1330



Note: This offering subject to errors, omissions, prior sales or withdrawal without notice.