

MEDICAL/PROFESSIONAL OFFICE FOR LEASE

Located 5 minutes from Dr. Phillips Hospital

DR. PHILLIPS AREA
2,049 SF Avail @ \$29.00/SF/Yr

6900 TURKEY LAKE RD. UNIT 1-10, ORLANDO, FL 32819



SPACE FOR LEASE

PROPERTY HIGHLIGHTS

Available date: This space will be available NOVEMBER 1, 2020 or sooner

Uses: Retail, Office, Medical Office, or Professional Services

Lease Rate: \$29.00/SF/Yr **Terms:** Min 3-5 yrs

Join Tenants: Advanced Surgery Center, Merchant Pediatrics, Orlando Institute of Electrolysis, Sono Bello, Keller Williams, Cosmetic & Family Dentistry and more.

Location: Drive west on Sand Lake Rd. Make a right on Turkey Lake Rd. Sand Lake Building will be on your left-hand side, at the intersection of Turkey Lake Rd & Wallace Rd.

Summary: Class A Medical/Professional Office approx. 2049SF space is available for lease. The office has a reception area, waiting area, 3 exam rooms, 1 large procedure room, breakroom, and oversized physician office with private restroom. There is a private exterior entrance to the office. It is located in a Medical Office Condo Building strategically located minutes from downtown, & 5 minutes from Dr. Phillips Hospital.



8865 Commodity Cir. #12
Orlando, FL 32819
www.CFLRG.com

Yvette Iturrino
Real Estate Broker
O:(407) 392-2201
M:(407) 731-5552
yvette@cflrg.com

Jesette Iturrino
Sales Associate
O:(407) 392-2201
M:(407) 706-4999
jesette@cflrg.com

MEDICAL/PROFESSIONAL OFFICE FOR LEASE

PROPERTY PHOTOS

LOBBY



RECEPTION



RECEPTION CLOSET



HALLWAY



8865 Commodity Cir. #12
Orlando, FL 32819
www.CFLRG.com

Yvette Iturrino
Real Estate Broker
O:(407) 392-2201
M:(407) 731-5552
yvette@cflrg.com

Jesette Iturrino
Sales Associate
O:(407) 392-2201
M:(407) 706-4999
jesette@cflrg.com

MEDICAL/PROFESSIONAL OFFICE FOR LEASE

PROPERTY PHOTOS

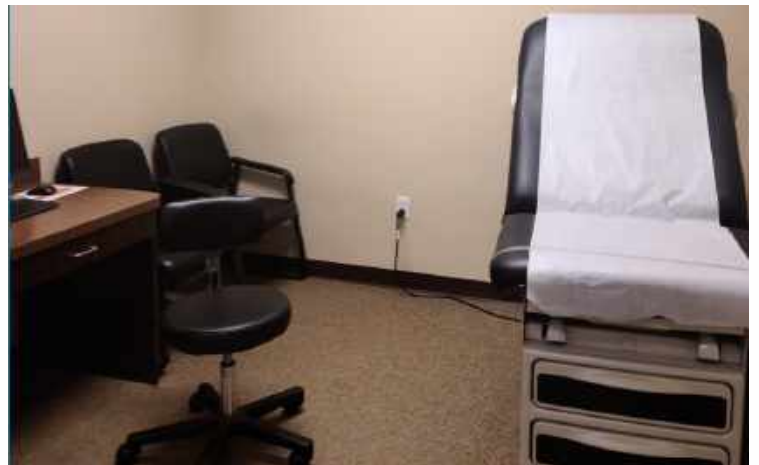
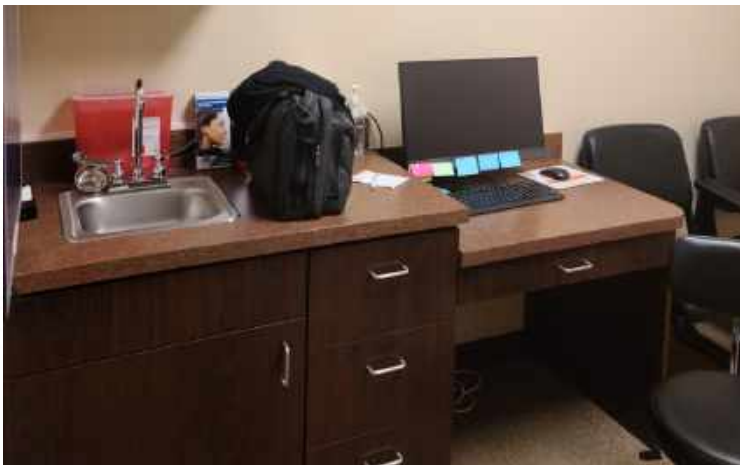
EXAM ROOM 1



EXAM ROOM 2



EXAM ROOM 3



8865 Commodity Cir. #12
Orlando, FL 32819
www.CFLRG.com

Yvette Iturrino
Real Estate Broker
O:(407) 392-2201
M:(407) 731-5552
yvette@cflrg.com

Jesette Iturrino
Sales Associate
O:(407) 392-2201
M:(407) 706-4999
jesette@cflrg.com

MEDICAL/PROFESSIONAL OFFICE FOR LEASE

PROPERTY PHOTOS

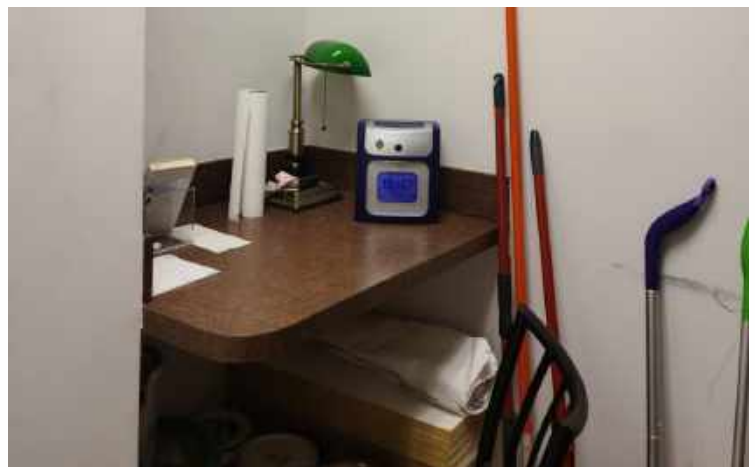
NURSE STATION



PRIVATE OFFICE



BREAKROOM



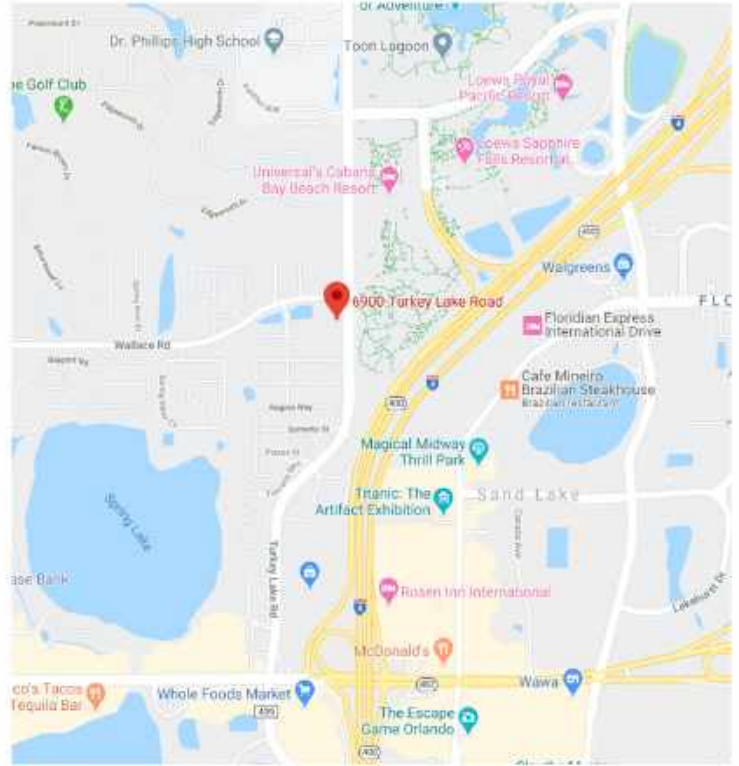
8865 Commodity Cir. #12
Orlando, FL 32819
www.CFLRG.com

Yvette Iturrino
Real Estate Broker
O:(407) 392-2201
M:(407) 731-5552
yvette@cflrg.com

Jesette Iturrino
Sales Associate
O:(407) 392-2201
M:(407) 706-4999
jesette@cflrg.com

MEDICAL/PROFESSIONAL OFFICE FOR LEASE

AERIAL VIEW & STREET MAP

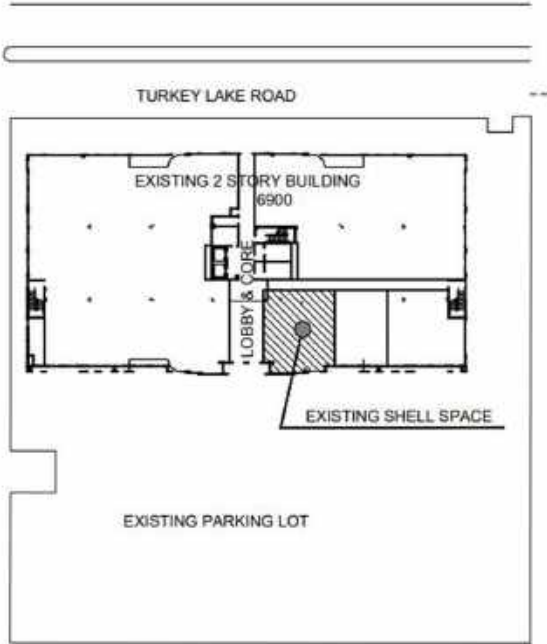


8865 Commodity Cir. #12
Orlando, FL 32819
www.CFLRG.com

Yvette Iturrino
Real Estate Broker
O:(407) 392-2201
M:(407) 731-5552
yvette@cflrg.com

Jesette Iturrino
Sales Associate
O:(407) 392-2201
M:(407) 706-4999
jesette@cflrg.com

SITE PLAN & FLOOR PLAN



 SITE KEY PLAN
SCALE: NTS

