



For Lease

442 Speedwell Avenue

MORRIS PLAINS, NJ

Available Space

- Approx 1750 SF on First Floor
- Private Offices, Conference Room, Work-Stations
Kitchenette, Private Bathrooms, Reception Area
Basement Storage
- Operational Windows Throughout Space
- Fully Furnished: includes Wall Mounted Smart TV
and White Board
- Immediately Available
- IDEAL for Professional or Creative Business
(B-4 Zoning)

Property/Building Features

- Property Size 2754 SF
- .24 Acres
- Free Standing Building
- On-Site Parking for 14 Cars
- Monument Signage on Speedwell Avenue
- Walking Distance to NYC/Dover Train
- Proximate to Route 287, 24, 10 and 80
- Minutes to Morristown

Contact Our Exclusive Agents

Judith Tell Feldman

jfeldman@newmarkrealestate.com

Mobile: 862.227.6464

Office: 973.884.4444 ext. 28

Jeannette Melillo

jmelillo@newmarkrealestate.com

Mobile: 862.227.6464

Office: 973.884.4444 ext. 39



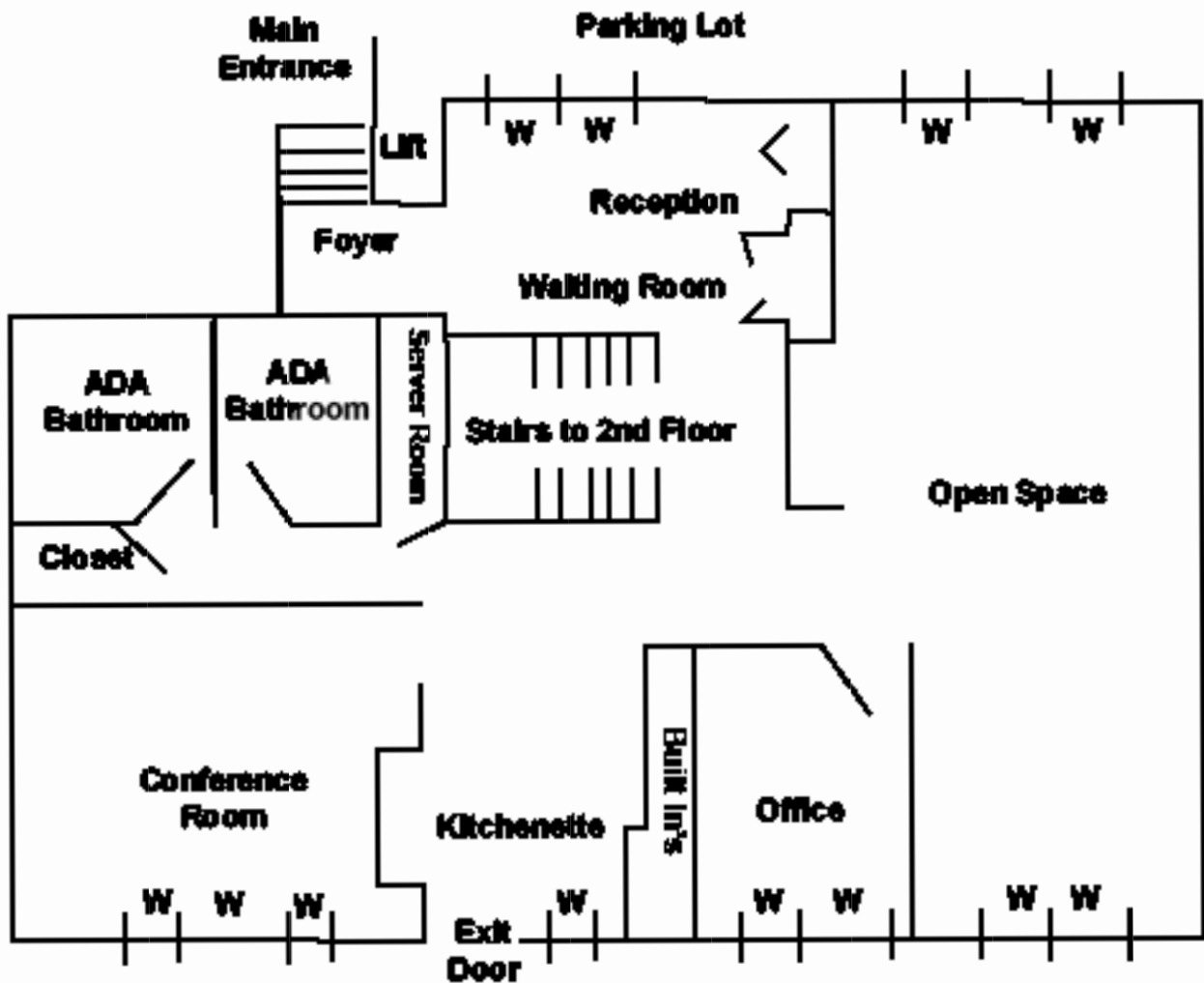
YEARS STRONG

2020 Newmark Associates, CRE, LLC. Information obtained from sources deemed to be reliable. However, no guarantee, warrant or representation is made as to accuracy of the information presented which is submitted subject to errors, omission, change of price, rental or other conditions, prior sale lease, financing or withdrawal without notice. Projections, opinions, assumptions or estimates are provided for example only, and may not represent current or future performance. Interested parties should consult their tax and legal advisors and conduct a thorough investigation of the property and any prospective transaction.

442 Speedwell Avenue

MORRIS PLAINS, NJ

Floor Plan



442 Speedwell Avenue

YEARS STRONG

2020 Newmark Associates, CRE, LLC. Information obtained from sources deemed to be reliable. However, no guarantee, warrant or representation is made as to accuracy of the information presented which is submitted subject to errors, omission, change of price, rental or other conditions, prior sale lease, financing or withdrawal without notice. Projections, opinions, assumptions or estimates are provided for example only, and may not represent current or future performance. Interested parties should consult their tax and legal advisors and conduct a thorough investigation of the property and any prospective transaction.