



# COMMERCIAL REAL ESTATE CONSULTANTS

279 EAST 5900 SOUTH, MURRAY, UTAH 84107



## Property Information

- Suite 201: 2,527 RSF - Available Sept. 1, 2020
- Monument Signage Available
- Total Building: 12,566 RSF
- Fiber Available
- Easy Access to I-15 and I-215
- Adjacent to TOSH and Close Proximity to IMC Hospital

**LEASE RATE : \$16.00/SF FULL SERVICE**  
 - Less Interior Janitorial -

## Demographics

	1 Mile	3 Mile	5 Mile
Population	14,574	135,656	367,628
Households	5,728	53,785	134,737
Avg. Household Income	\$57,144	\$55,523	\$59,609

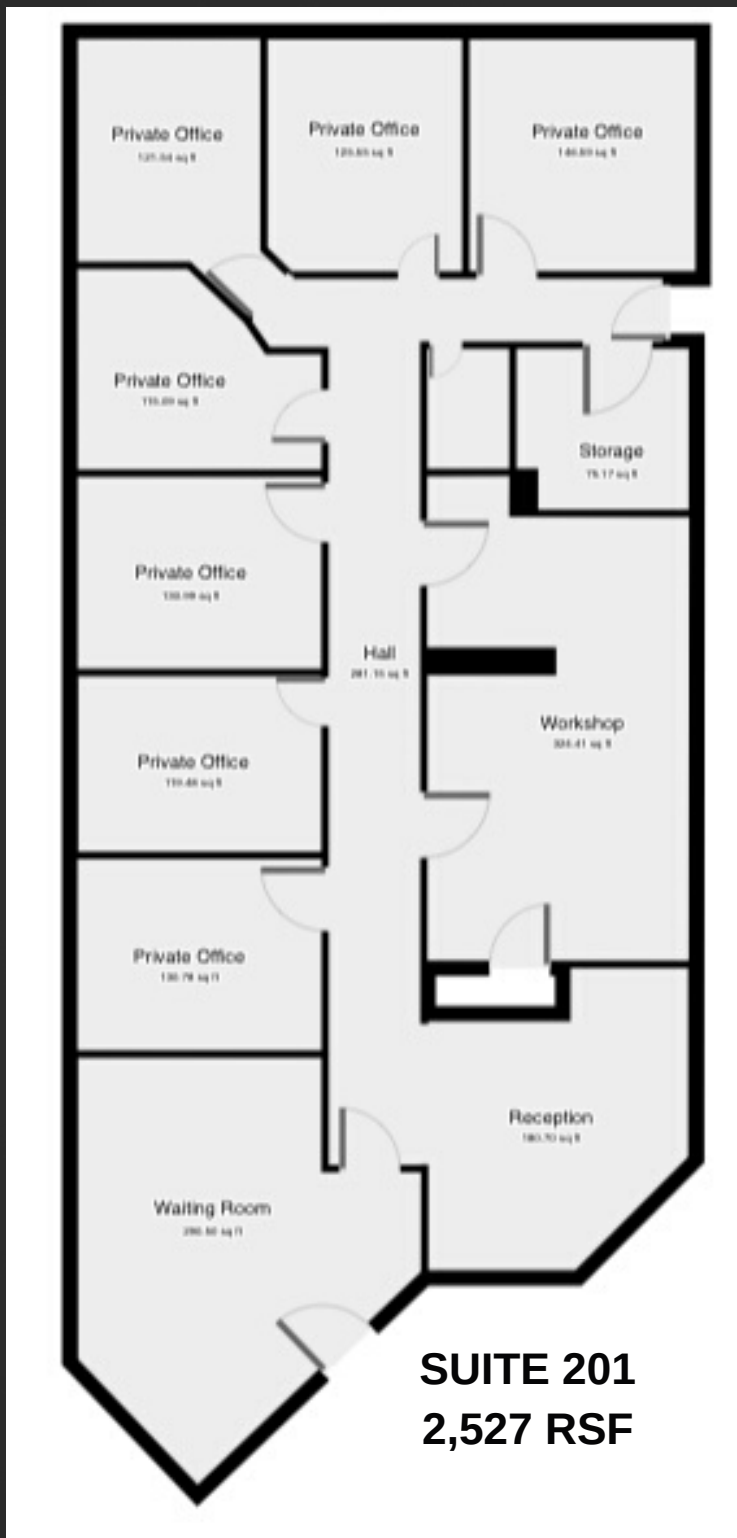
## Traffic Counts

Fashion Blvd.: 10,730 Annual Average Daily Traffic  
 5900 South: 10,590 Annual Average Daily Traffic

# 801.617.1700

KELLEN KONCAR  
 KELLEN.KONCAR@CRCNATIONWIDE.COM

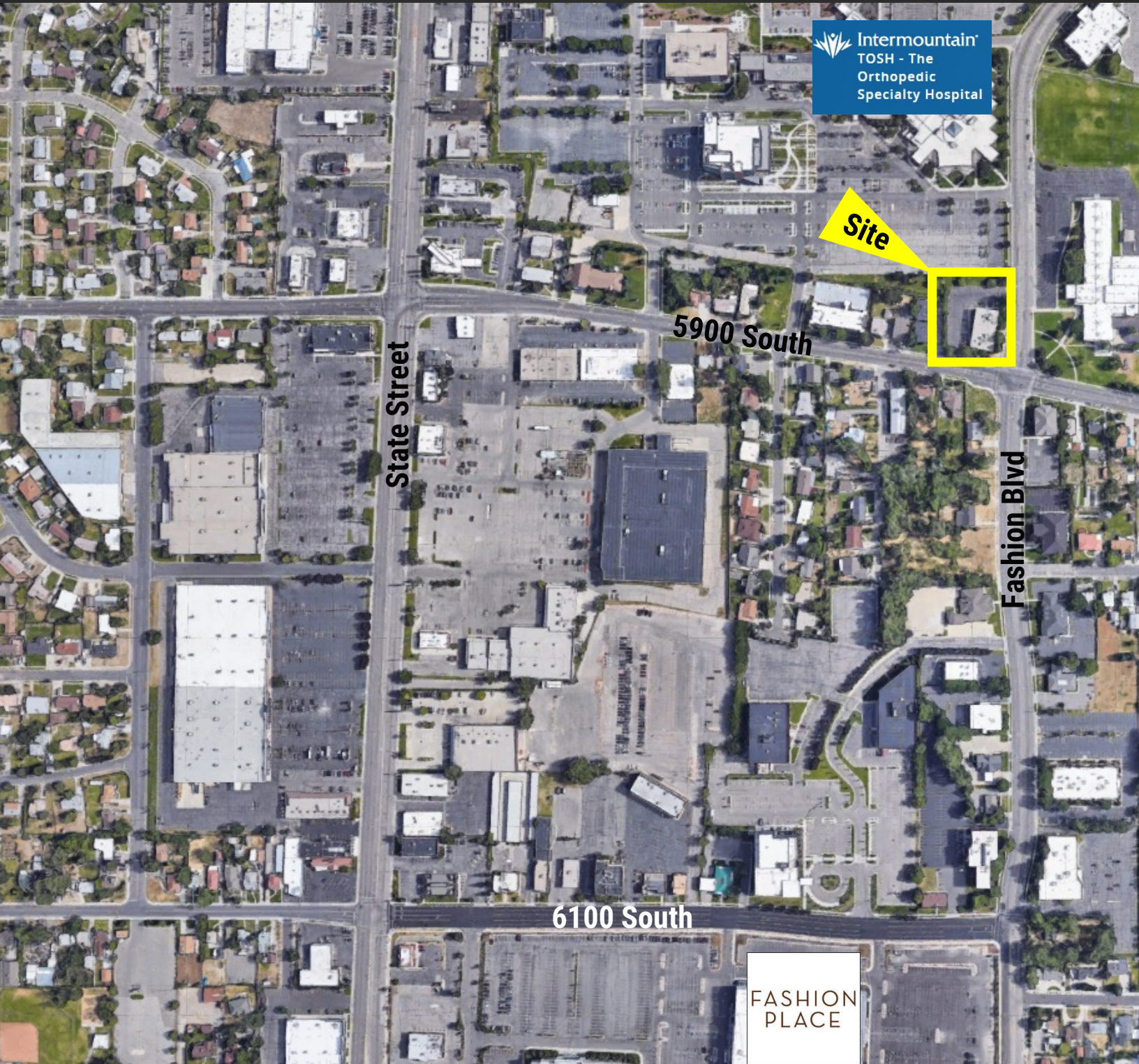
DANEILE SNELLING  
 DANEILE.SNELLING@CRCNATIONWIDE.COM





# COMMERCIAL REAL ESTATE CONSULTANTS

279 EAST 5900 SOUTH, MURRAY, UTAH 84107



Intermountain  
TOSH - The  
Orthopedic  
Specialty Hospital

Site

State Street

5900 South

Fashion Blvd

6100 South

FASHION  
PLACE

KELLEN KONCAR

801.617.1700

DANEILE SNELLING

KELLEN.KONCAR@CRCNATIONWIDE.COM DANEILE.SNELLING@CRCNATIONWIDE.COM