



COMMERCIAL REAL ESTATE CONSULTANTS

SUGARHOUSE CONTEMPORARY OFFICE FOR LEASE

1371 EAST 2100 SOUTH, SALT LAKE CITY, 84105



Property Information

- 3,540 SF Available for Lease
- Contemporary Office Space
- Prime Sugarhouse Location
- Built in 2003
- Walking Distance to Multiple Restaurants
- Easy Access to I-80

Demographics

	1 Mile	3 Mile	5 Mile
Population	19,587	149,814	306,942
Households	8,049	61,890	123,912
Avg. Household Income	\$81,507	\$61,890	\$62,381

Traffic Counts

2100 South:	23,092 Annual Average Daily Traffic
1300 East:	34,102 Annual Average Daily Traffic

LEASE RATE : \$24.00/SF FULL SERVICE

West Haradin

801.617.1700

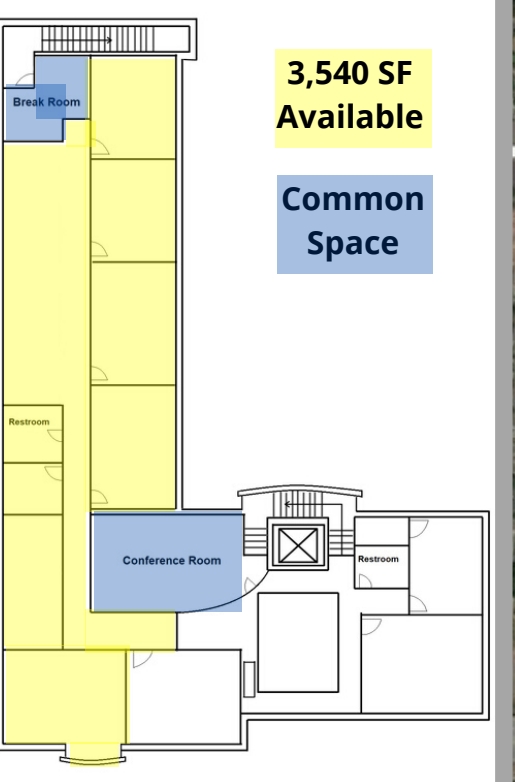
Crystal Johnson

west.haradin@crcnationwide.com

crystal.johnson@crcnationwide.com

SUGARHOUSE CONTEMPORARY OFFICE FOR LEASE

1371 EAST 2100 SOUTH, SALT LAKE CITY, 84105



West Haradin

801.617.1700

Crystal Johnson

west.haradin@crcnationwide.com

crystal.johnson@crcnationwide.com