



# COMMERCIAL REAL ESTATE CONSULTANTS

## MURRAY OFFICE AVAILABLE FOR LEASE

291 WEST 5400 SOUTH, MURRAY 84107



### Property Information

- Suite 101: 2,272 RSF  
Demisable to 1,136 RSF
- Suite 201: 2,272 RSF
- 9,088 SF Total Building
- Open Floor Plans
- Office Furniture Available
- Ample Parking: 5.27/1,000 SF
- Many Nearby Retail/Restaurant Amenities
- Immediate Access to I-15
- Fiber Available

### Demographics

	1 Mile	3 Mile	5 Mile
Population	11,695	137,923	394,982
Households	4,272	53,347	142,643
Avg. Household Income	\$55,257	\$57,610	\$62,498

### Traffic Counts

5300 South: 30,504 Annual Average Daily Traffic  
 Commerce Dr: 27,226 Annual Average Daily Traffic

**LEASE RATE : \$13.00/SF FULL SERVICE - Less Interior Janitorial**

KELLEN KONCAR

**801.617.1700**

MATT MANGUM

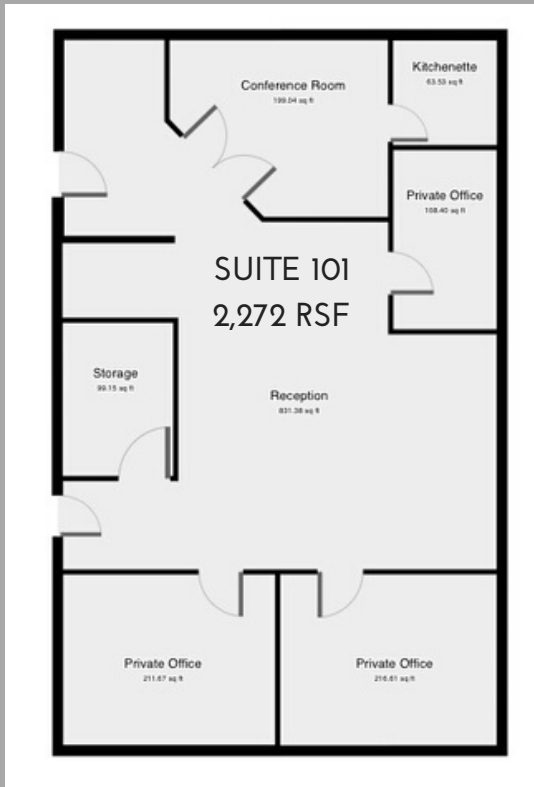
KELLEN.KONCAR@CRCNATIONWIDE.COM

MATT.MANGUM@CRCNATIONWIDE.COM



# COMMERCIAL REAL ESTATE CONSULTANTS

291 WEST 5400 SOUTH, MURRAY 84107



This information is given with the understanding that all negotiations and/or real estate activity related to the property described above shall be conducted through this cRc Nationwide office. The above information while not guaranteed, was obtained from sources we believe to be reliable.

KELLEN KONCAR

801.617.1700

MATT MANGUM

KELLEN.KONCAR@CRCNATIONWIDE.COM

MATT.MANGUM@CRCNATIONWIDE.COM