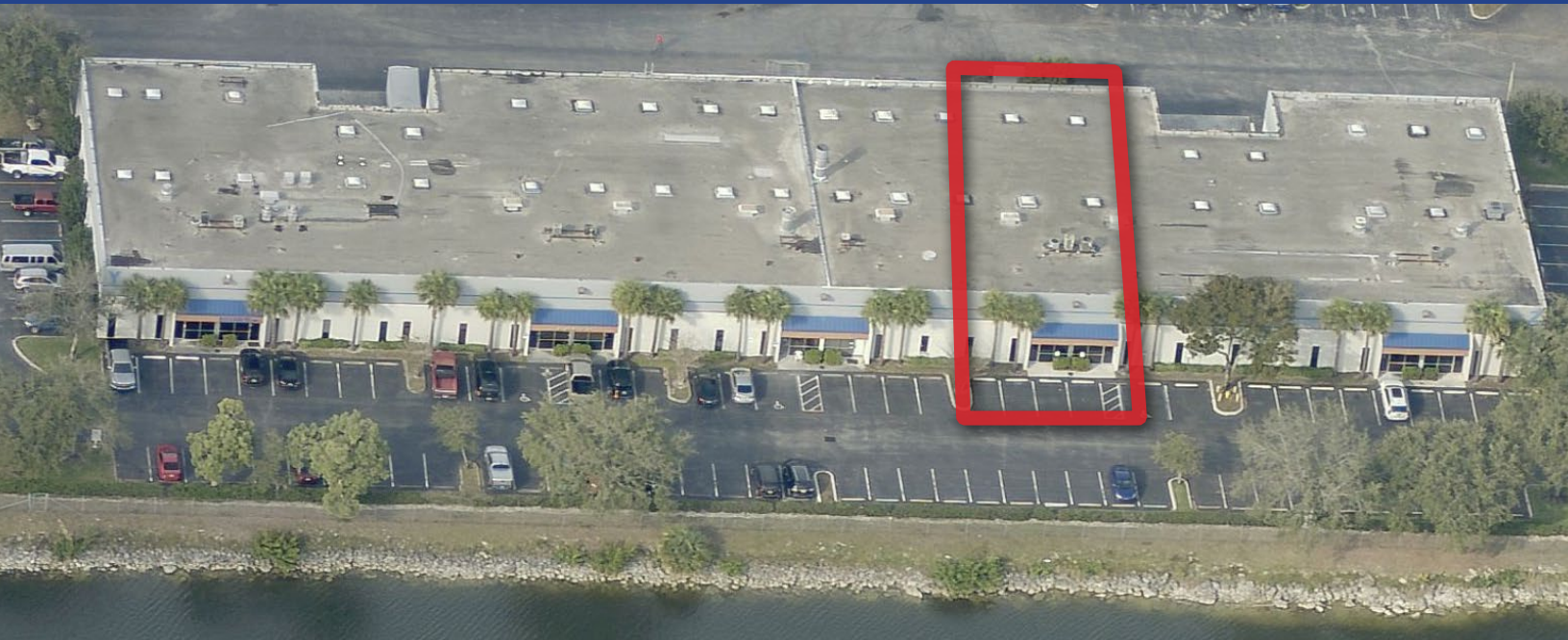


# POWERLINE BUSINESS PARK



4100 N. Powerline Rd. Z-2 Deerfield Beach, FL 33073

## FOR SUB-LEASE

## OFFICE / WAREHOUSE



- IMMEDIATE OCCUPANCY
- 2 Offices
- Sub-Lease Expires 12/31/23
- Nice & Clean
- Roll-Up Garage Door 12'W x 14'H
- 16' Clear Ceiling Height
- Office 600 ±SQFT
- Powerline / Sample Rd Area
- Easy Access to I-95 & Turnpike

LOT SIZE:  
**3,600±SQFT**

LEASE:

**\$4,193**/Month



**JOE PELAYO** / CCIM, SIOR  
✉ [trec@joepelayo.com](mailto:trec@joepelayo.com)  
**954.224.8773**

**TREC**  
Total Real Estate  
Consultants Inc.  
[www.trecfl.com](http://www.trecfl.com)  
954.341.3294

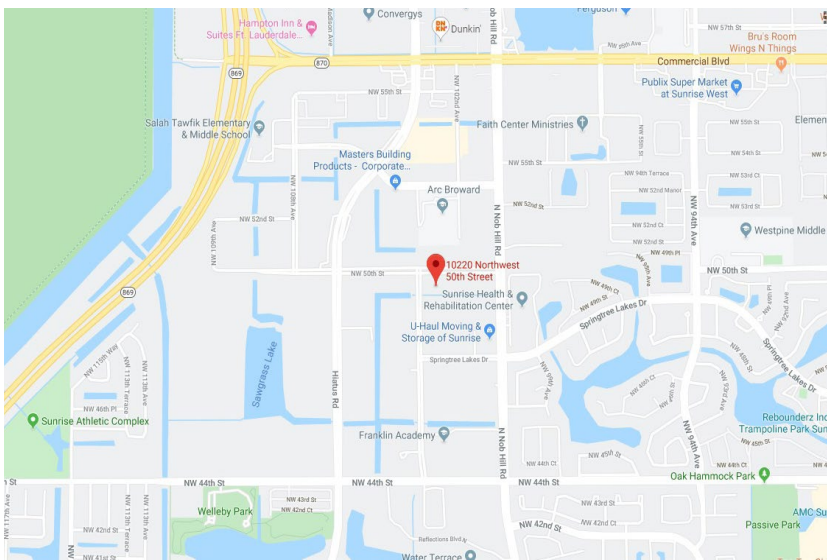


**GEORGE W. CASEY**  
✉ [georgewileycasey@gmail.com](mailto:georgewileycasey@gmail.com)  
**954.592.1776**  
VICE PRESIDENT  
US VETERAN CHAMBER OF COMMERCE



*Note: This offering subject to errors, omissions, prior sales or withdrawal without notice.*

# POWERLINE BUSINESS PARK



**JOE PELAYO** / CCIM, SIOR  
 ✉ [trec@joepelayo.com](mailto:trec@joepelayo.com)  
 954.224.8773

**TREC**  
 Total Real Estate  
 Consultants Inc.  
[www.trecfl.com](http://www.trecfl.com)  
 954.341.3294



**GEORGE W. CASEY**  
 ✉ [georgewileycasey@gmail.com](mailto:georgewileycasey@gmail.com)  
 954.592.1776  
 VICE PRESIDENT  
 US VETERAN CHAMBER OF COMMERCE



*Note: This offering subject to errors, omissions, prior sales or withdrawal without notice.*