

970 SOUTH 3200 WEST, SALT LAKE CITY 84104

SALT LAKE CITY WAREHOUSE WITH CRANES

INDUSTRIAL SUBLEASE



PROPERTY INFORMATION

- 27,328 SF Total Available
 - Divisible to: 20,000 SF
 - 4,600 SF Office Space
 - 22,728 SF Warehouse Space
- Paved Yard
- Site Size: 2.03 Acres
- 3 Phase Power/2,000 Amp/480 Volt
- (5) 14' x 16' Ground Level Door
- Clearance Height: 18' - 20'
- (2) 5-Ton Cranes
- (3) 10-Ton Cranes
- Compressed Air Lines Throughout
- Fire Sprinklers and GFA Heating
- Year Built: 1998
- Zoning M-1
- Convenient Access to California Avenue, I-215, I-80 and Bangerter Hwy

LEASE RATE: \$0.58/SF MONTH NNN

801.617.1700

DEREK KLOPFER

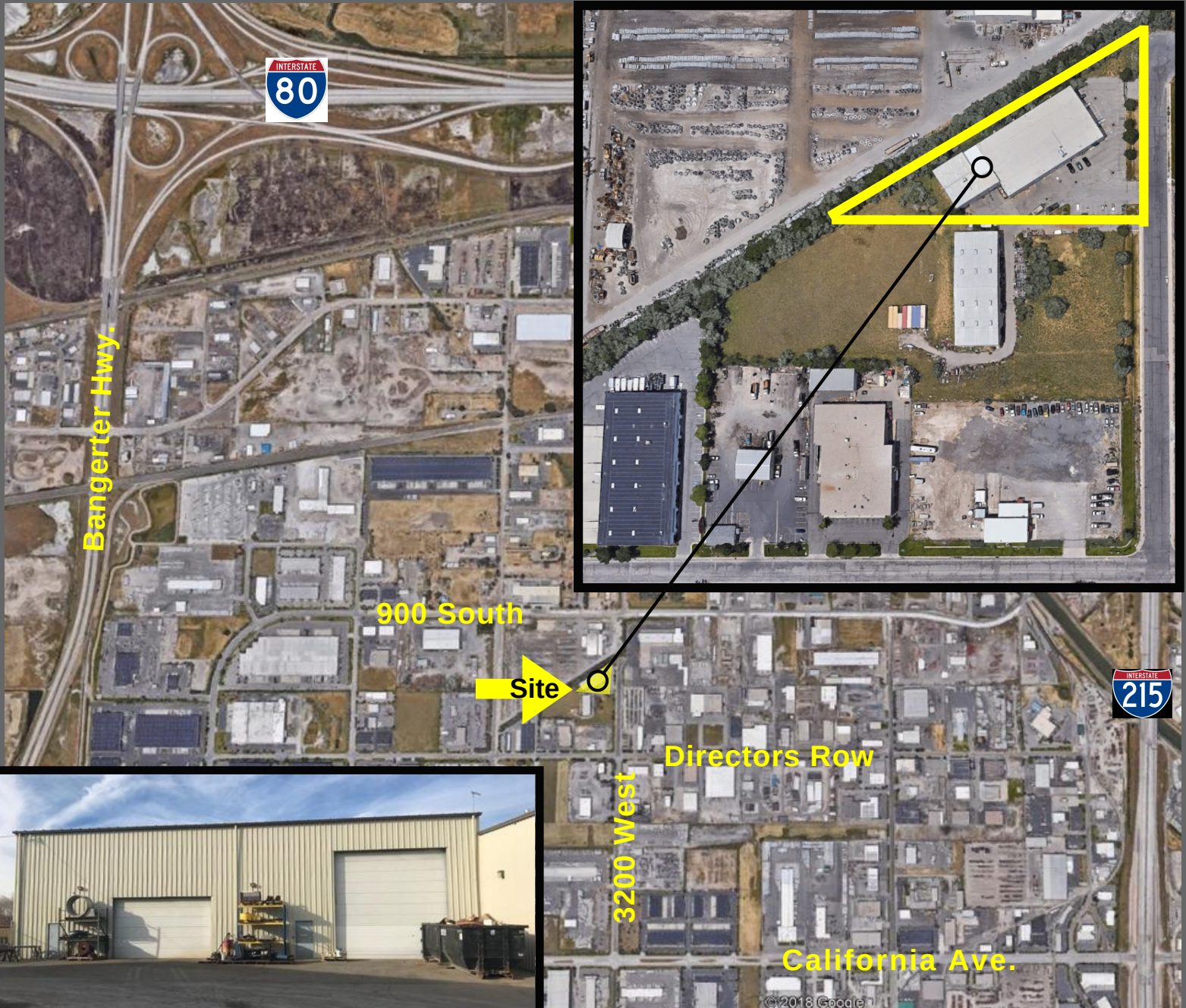
DEREK.KLOPFER@CRCNATIONWIDE.COM

WEST HARADIN

WEST.HARADIN@CRCNATIONWIDE.COM

970 SOUTH 3200 WEST, SALT LAKE CITY 84104

This information is given with the understanding that all negotiations and/or real estate activity related to the property described above shall be conducted through this cRc Nationwide office. The above information while not guaranteed, was obtained from sources we believe to be reliable.



801.617.1700

DEREK KLOPFER
DEREK.KLOPFER@CRCNATIONWIDE.COM

WEST HARADIN
WEST.HARADIN@CRCNATIONWIDE.COM