

FOR LEASE

PRIME RETAIL SPACE IN DUNEDIN

FRONT PATRICIA AVE | 2101 MULTREES CROSSING

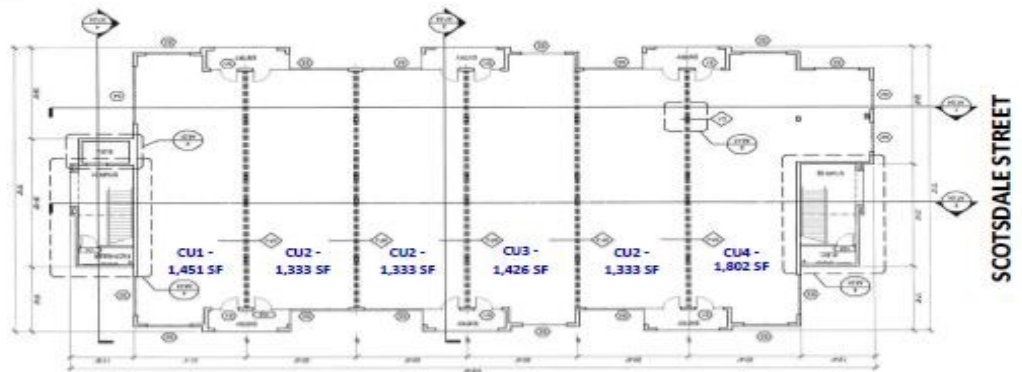


6 SUITES AVAILABLE

RETAIL SHOPS

Approximately 8,678 SF

- CU1 (1 unit) — 1,451 sf
- CU2 (3 units) — 3,999 sf
(1,333 sf each)
- CU3 (1 unit) — 1,426 sf
- CU4 (1 unit) — 1,802 sf



PATRICIA AVENUE

SCOTSDALE STREET



COASTAL

COMMERCIAL REAL ESTATE

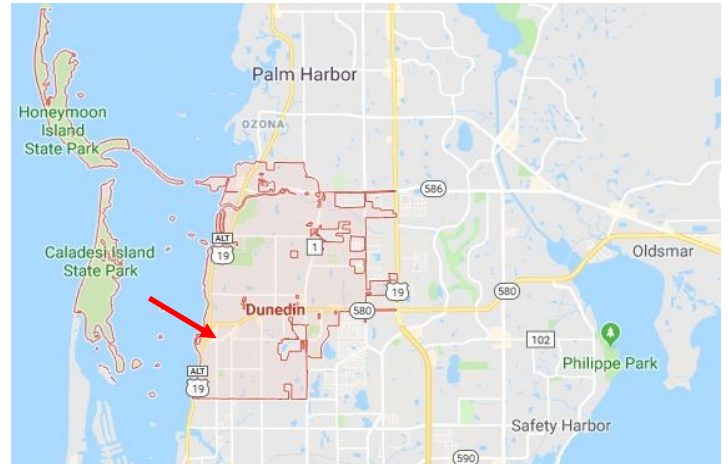
www.CoastalCRE.com

FOR LEASE

PRIME RETAIL SPACE IN DUNEDIN

FRONTS PATRICIA AVE | DUNEDIN, FL | 34698

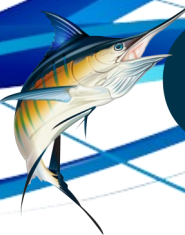
- THIS RETAIL CENTER OF A MASTER PLANNED UPSCALE 300+ UNIT COMMUNITY IS SITUATED IN THE THRIVING WATERFRONT TOWN OF DUNEDIN. THE RETAIL FRONTS PATRICIA AVENUE WITH ITS OWN PARKING. THE PROPERTY UNITS' MINIMUM SIZE IS 1333SF TO MAXIMUM CONTIGUOUS 8678SF. ONE ANCHOR END OF THE RETAIL HAS BEEN DESIGNED TO ACCOMMODATE A RESTAURANT WITH A FULL KITCHEN. THIS IS AN EXCLUSIVE OFFERING AND WILL GO QUICKLY ESPECIALLY WITH THE BUILT-IN COMPONENTS OF THE MASTER PLANNED UNITS. THERE IS A MIXED USE COMPONENT ABOVE THE RETAIL SPACE AS WELL.
- YOUR BUILT IN CUSTOMER BASE, LIVE IN DUNEDIN COMMONS APARTMENTS, WHERE YOU'LL FIND A RELAXING LIFESTYLE. THE OVERALL BEAUTIFUL PROPERTY HAS THE LUXURY RESORT-STYLE AMENITIES, INCLUDING BEAUTIFUL OUTDOOR LOUNGE, YOGA STUDIO, BEAUTIFUL WALKING TRAIL, AND A RESORT STYLE POOL TO ENJOY OUR BEAUTIFUL FLORIDA WEATHER. THE APARTMENT HOMES ARE BEAUTIFULLY APPOINTED WITH 9-FOOT CEILINGS, SPACIOUS WALK-IN CLOSETS AND SCREENED LANAIS.
- YOUR CUSTOMER BASE HAS ACCESS TO THE POPULAR PINELLAS TRAIL, STRETCHING NEARLY 40 MILES FROM TARPON SPRINGS TO THE NORTH AND ST. PETERSBURG TO THE SOUTH. YOUR BUSINESS WILL BE A PART OF THIS VIBRANT COMMUNITY IN THE HEART OF POPULAR DUNEDIN, JUST MINUTES TO WORLD-CLASS HONEYMOON ISLAND AND CLEARWATER BEACH. BECOME A PART OF THE DUNEDIN COMMUNITY OF GREAT LOCAL RESTAURANTS, ENTERTAINMENT, SHOPPING, EVEN A FARMERS MARKET! DUNEDIN IS FLORIDA'S CULTURE CAPITAL AND WHY NOT HAVE YOUR BUSINESS IN THE HEART OF IT!



CALL FOR MORE INFO

Robert Barber
727-772-3128

rbaber@coastalpropertyfl.com



COASTAL

COMMERCIAL REAL ESTATE
www.CoastalCRE.com