



cRc Nationwide

COMMERCIAL REAL ESTATE CONSULTANTS



4699 SOUTH 4800 WEST, SALT LAKE CITY 84120

FOR SALE OR LEASE



*** Seller Financing Available ***

Property Information

- 2,650 SF Free Standing Building
- Great Space for Retail, Office or Auto Use
- Available Immediately for Occupancy
- Zoned: C-2 (General Commercial)
- Site Size: 0.45 Acres
- Ample Parking: 6.49/1,000 SF
- Located on a Hard Corner with Signalized Intersection
- Easy Access to Mountain View Corridor and Bangerter Hwy

Demographics

	1 Mile	3 Mile	5 Mile
Population	23,981	172,321	330,322
Households	6,745	48,801	97,669
Avg. Household Income	\$56,311	\$64,797	\$64,238

801.617.1700

SALE PRICE REDUCED!!
FROM ~~\$695,000.00~~ TO \$595,000.00
SELLER FINANCING AVAILABLE

LEASE RATE
\$4,000.00/MONTH NNN

WEST HARADIN

✉ WEST.HARADIN@CRCNATIONWIDE.COM

DAN FAWSON

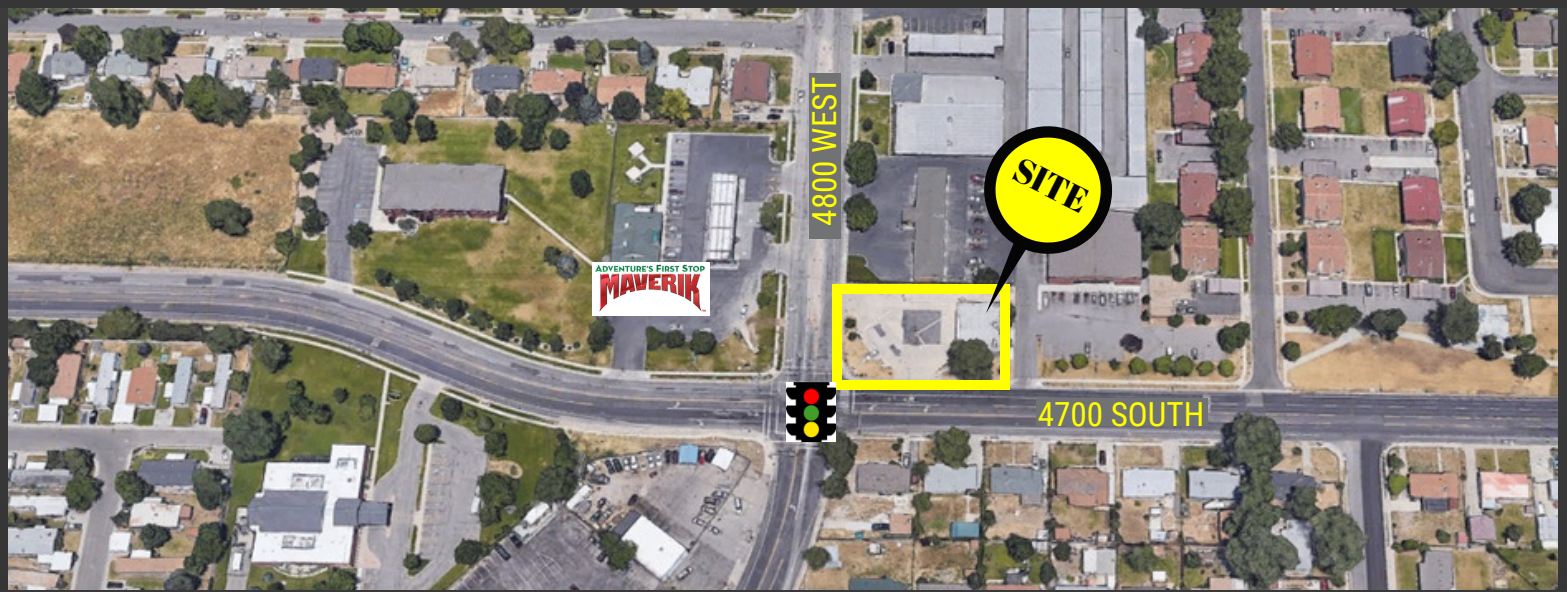
✉ DANIEL.FAWSON@CRCNATIONWIDE.COM



cRc Nationwide

COMMERCIAL REAL ESTATE CONSULTANTS

4699 SOUTH 4800 WEST, SALT LAKE CITY 84120



801.617.1700

WEST HARADIN

DAN FAWSON

✉ WEST.HARADIN@CRCNATIONWIDE.COM

✉ DANIEL.FAWSON@CRCNATIONWIDE.COM